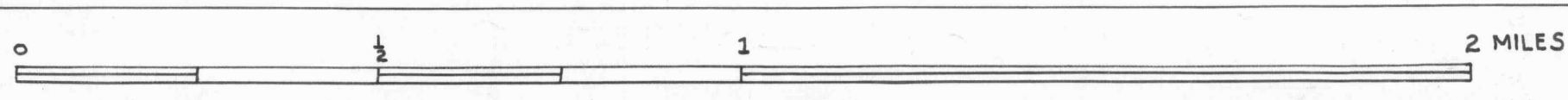


NEW CASTLE 6  
40° 50'  
80° 15'  
New Castle 9  
DAUGHERTY  
BEAVER 3  
40° 45'  
80° 15'

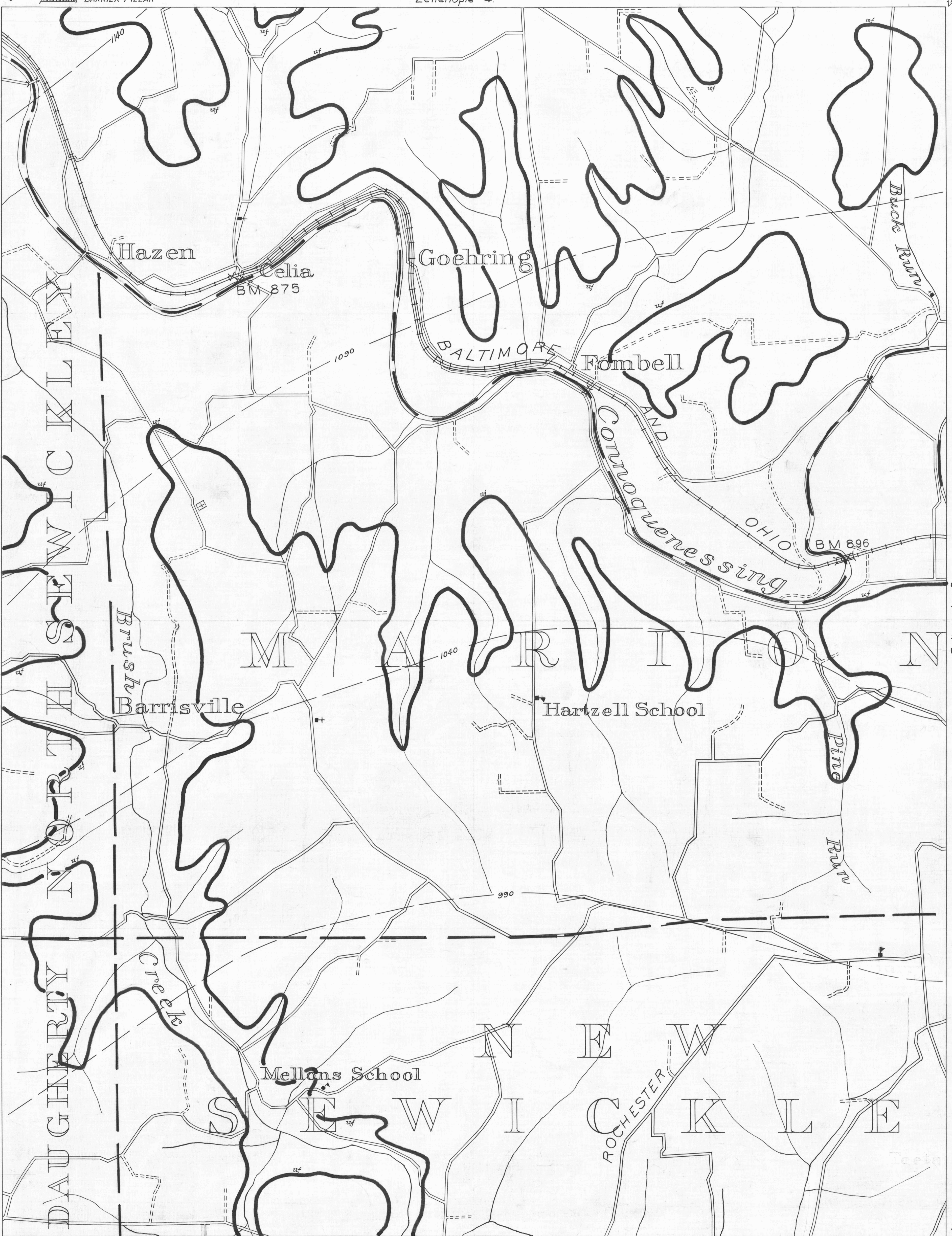
- DRIFT OPENING
- SLOPE OPENING
- SHAFTS
- BARRIER PILLAR



ZELIENOPLE SHEET NO 7  
Upper Freeport Seam-uf

Zelienople 4.

80° 10'  
40° 50'  
Zelienople 5.  
Buck Run  
Zelienople 8.  
40° 45'  
SEWICKLEY 2  
80° 10'



- ACTIVE OIL WELL
- ABANDONED OIL WELL
- ACTIVE GAS WELL
- ABANDONED GAS WELL
- ACTIVE OIL & GAS WELL
- ABANDONED OIL & GAS WELL
- DRY HOLE
- NO RECORD

Sewickley 1.

- COUNTY LINES
- TOWNSHIP LINES
- BOROUGH LINES
- COAL CONTOURS
- CROP LINES-SEAM BEING MINED
- CROP LINES-SEAMS NOT BEING MINED

W.P.A. PROJECT NO 4483

UF#7

TRACED BY D.S. Cochran 2-8-34  
LETTERED BY R.G. Bradtcher 2-12-34  
CHECKED BY Louis D. Powell 2/19/34