

- ACTIVE OIL WELL
- ◆ ABANDONED OIL WELL
- ⊛ ACTIVE GAS WELL
- ⊛ ABANDONED GAS WELL
- * ACTIVE OIL & GAS WELL
- * ABANDONED OIL & GAS WELL
- DRY HOLE
- NO RECORD

- COUNTY LINES
- TOWNSHIP LINES
- BOROUGH LINES
- SURFACE CONTOURS
- COAL CONTOURS
- CROP LINES - SEAM BEING MINED
- CROP LINES - SEAMS NOT BEING MINED

80°35'

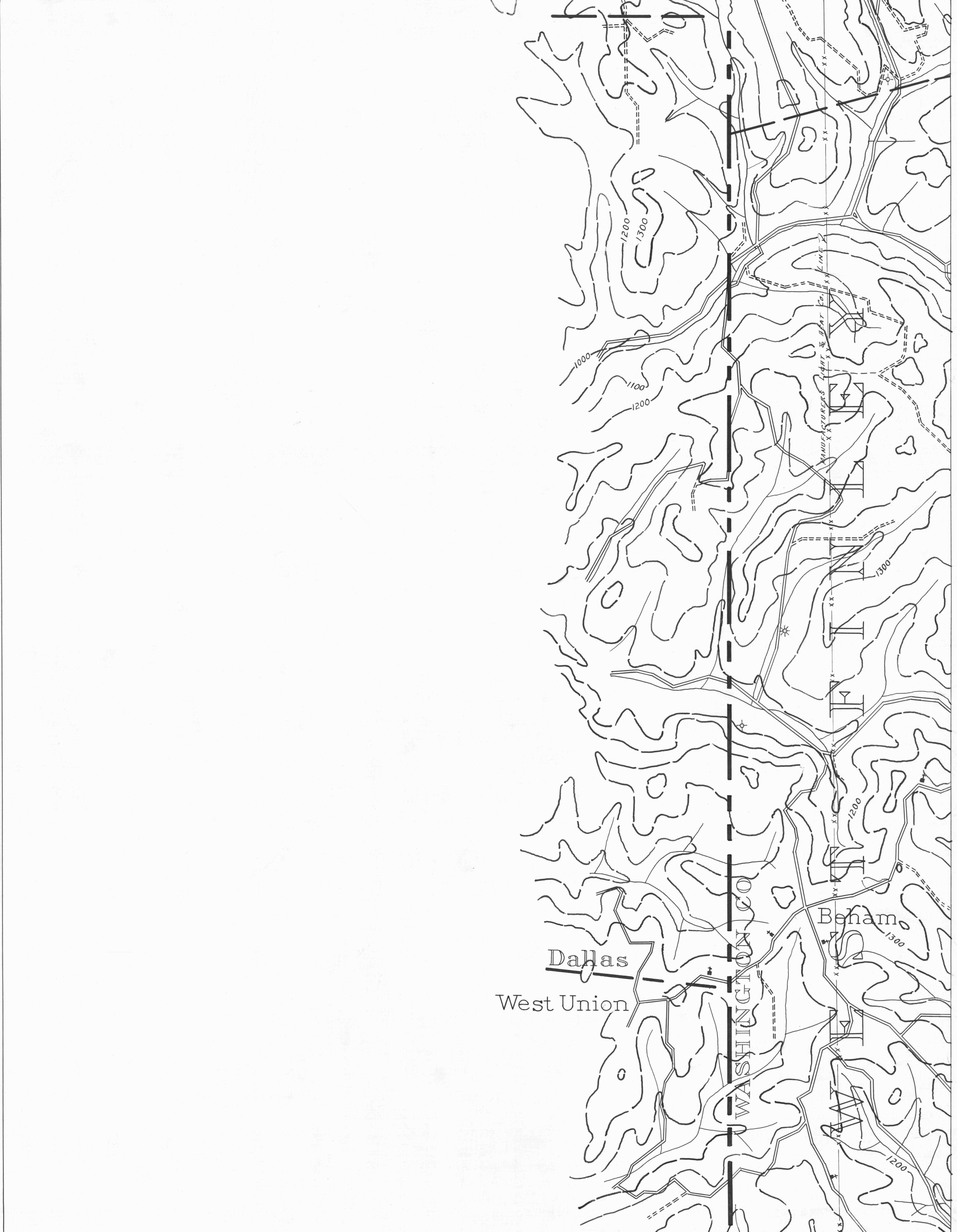
40°05'

Wheeling 6

80°30'

40°05'

Claysville 7



80°35'

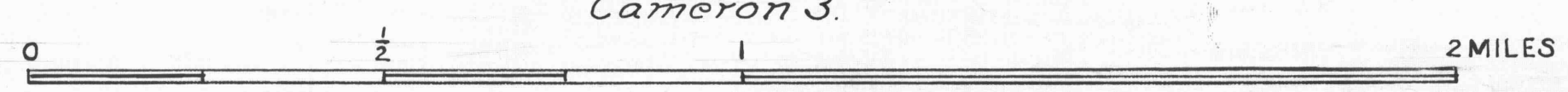
40°00'

Cameron 3

80°30'

40°00'

- DRIFT OPENING
- SLOPE OPENING
- SHAFTS
- ▨ BARRIER PILLAR



W.P.A. PROJECT NO 4483

WHEELING SHEET No. 9.

WHEELING, W.VA.

80°30'

40°00'