

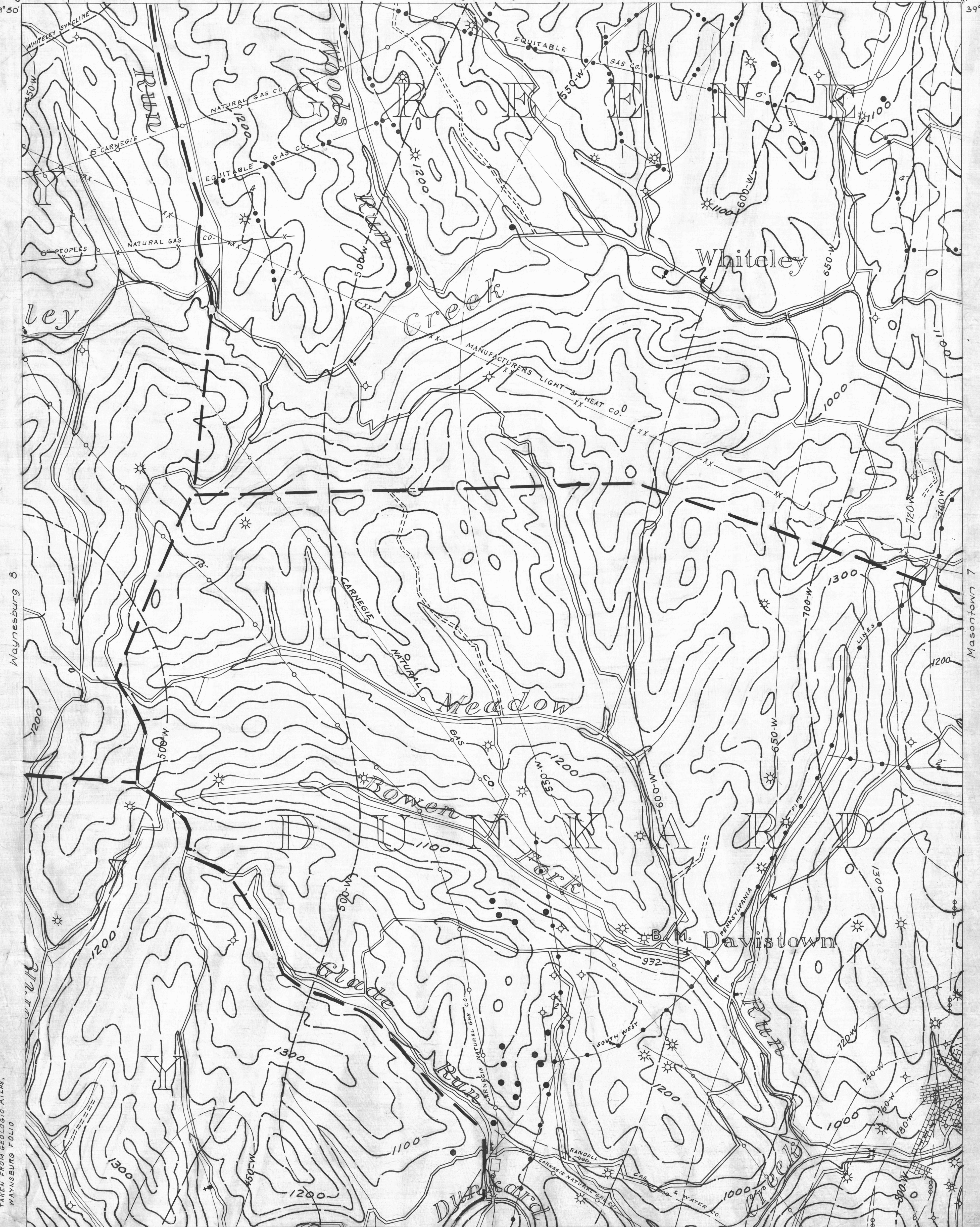
Waynesburg 9
39°50'

- ACTIVE OIL WELL
- ABANDONED OIL WELL
- * ACTIVE GAS WELL
- * ABANDONED GAS WELL
- * ACTIVE OIL & GAS WELL
- * ABANDONED OIL & GAS WELL
- DRY HOLE
- NO RECORD

- COUNTY LINES
- TOWNSHIP LINES
- BOROUGH LINES
- COAL CONTOURS
- CROP LINES-SEAM BEING MINED
- CROP LINES-SEAMS NOT BEING MINED

Masontown 4
39°50'

Waynesburg 6



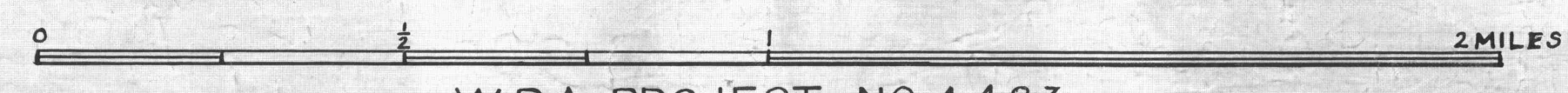
Waynesburg 8

Masontown 7

Blacksville 3

NOTE: CONTOURS MARKED "W" ARE TAKEN FROM GEOLOGIC ATLAS, WAYNSBURG FOLIO
BLACKVILLE 2
39°45'
80°05'

- Y DRIFT OPENING
- Z SLOPE OPENING
- SHAFTS
- ▨ BARRIER PILLAR



WAYNSBURG SHEET NO. 9
PITTSBURGH SEAM

W.P.A. PROJECT NO. 4483

39°45'
Morgantown 1