

Uniontown 2
39°55'

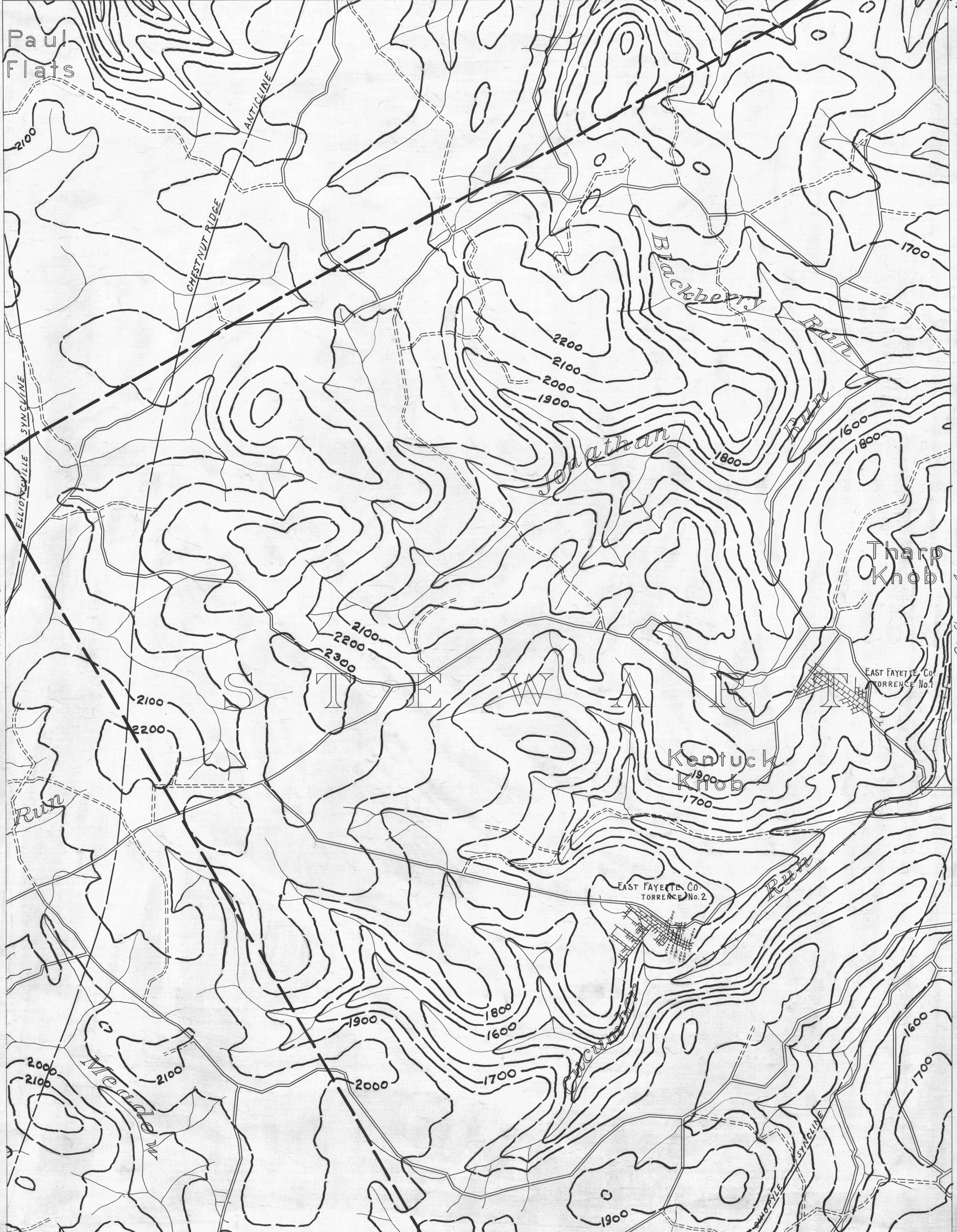
- ACTIVE OIL WELL
- ◊ ABANDONED OIL WELL
- * ACTIVE GAS WELL
- ◊ ABANDONED GAS WELL
- * ACTIVE OIL & GAS WELL
- ◊ ABANDONED OIL & GAS WELL
- DRY HOLE
- NO RECORD

Uniontown 3

- COUNTY LINES
- TOWNSHIP LINES
- BOROUGH LINES

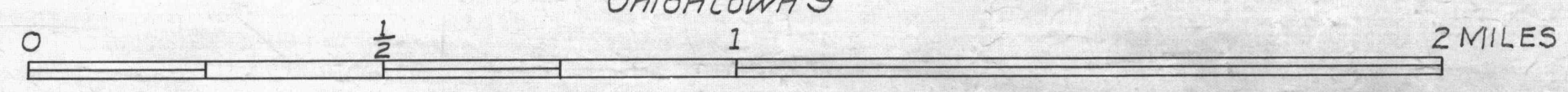
- COAL CONTOURS
- CROP LINES - SEAM BEING MINED
- CROP LINES - SEAMS NOT BEING MINED

CONFLUENCE 1
39°55'



Uniontown 8
39°50'

- DRIFT OPENING
- SLOPE OPENING
- SHAFTS
- BARRIER PILLAR



W.P.A. PROJECT NO 4483

UNIONTOWN SHEET NO 6
(C) UK-UPPER KITTANNING SEAM

CONFLUENCE 7
39°50'