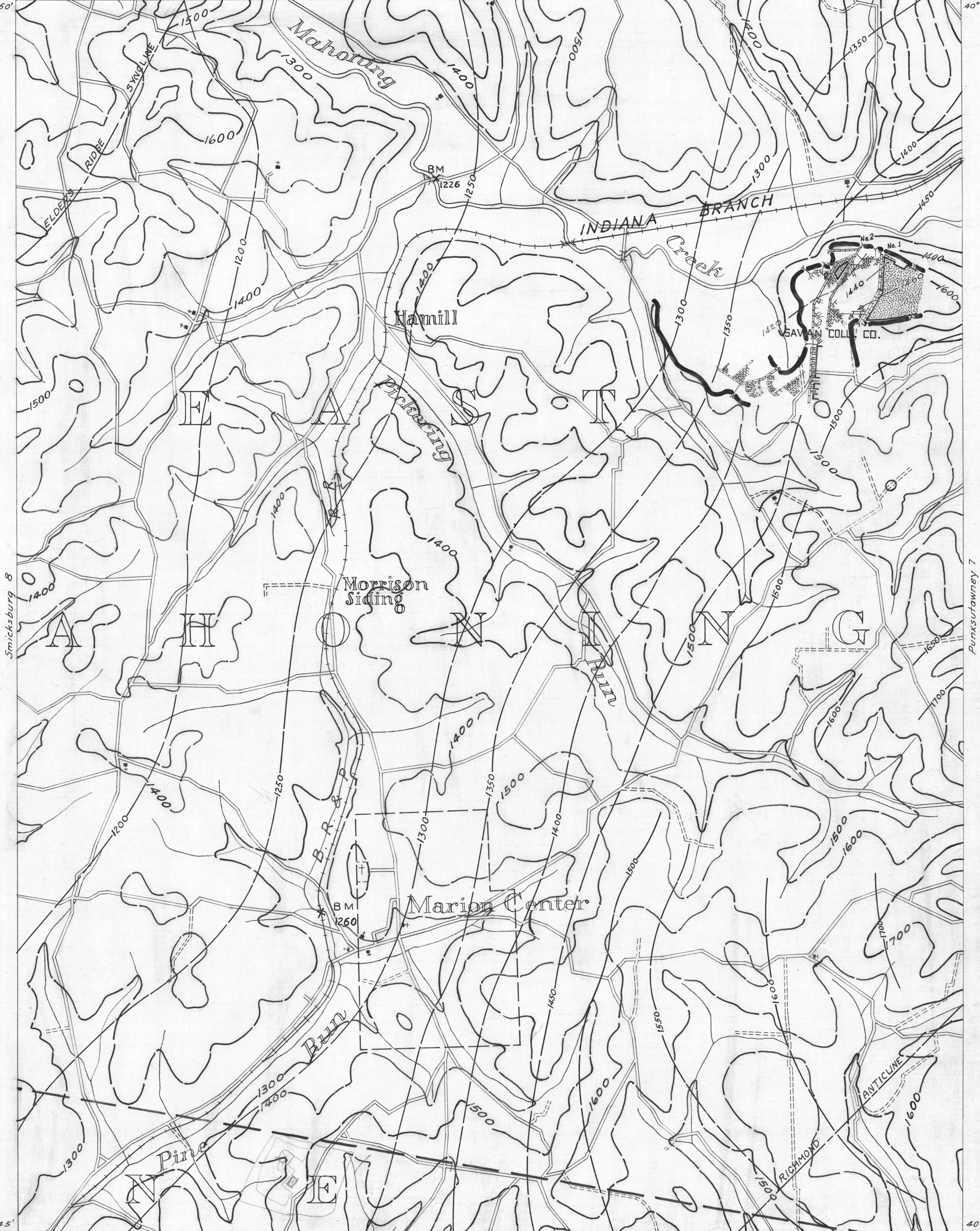


Smicksburg 5 79°05' 40°50' Smicksburg 6 79°00' 40°50' Punxsutawney 4

- ACTIVE OIL WELL
- ABANDONED OIL WELL
- ⊙ ACTIVE GAS WELL
- ⊙ ABANDONED GAS WELL
- ★ ACTIVE OIL & GAS WELL
- ★ ABANDONED OIL & GAS WELL
- ⊙ DRY HOLE
- NO RECORD

- COUNTY LINES
- TOWNSHIP LINES
- BOROUGH LINES

- 380' COAL CONTOURS
- CROP LINES—SEAM BEING MINED
- - - CROP LINES—SEAMS NOT BEING MINED



Indiana 2 79°05' 40°45' Indiana 3 2 MILES SMICKSBURG SHEET No. 9 (E) - U.F. SEAM W.P.A. PROJECT NO 4483 U.FREEPORT Punxsutawney 7 40°45'

- DRIFT OPENING
- SLOPE OPENING
- SHAFTS
- ▨ BARRIER PILLAR