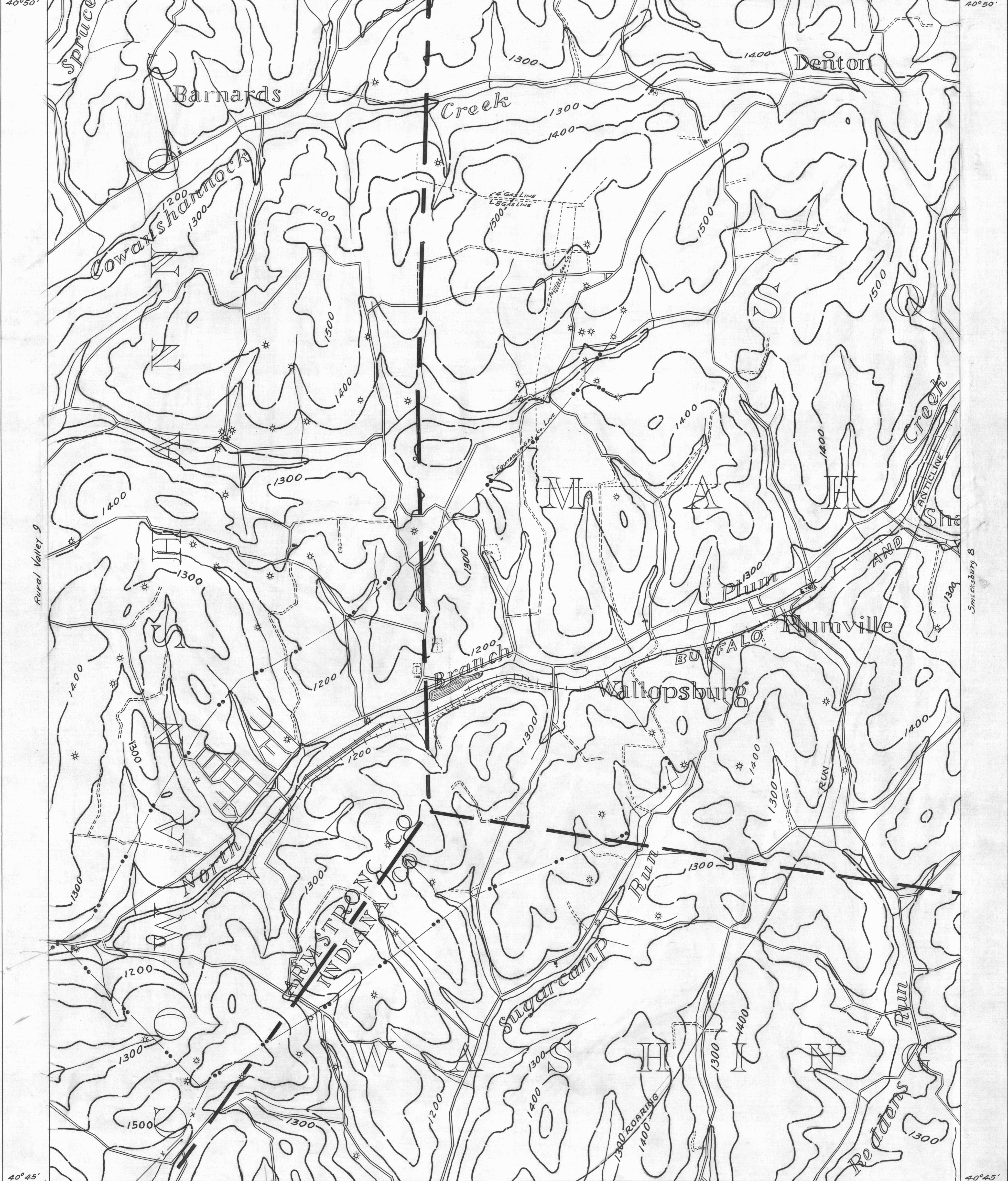


Rural Valley 6 79°15' 40°50' Smicksburg 4
 ● ACTIVE OIL WELL * ACTIVE OIL & GAS WELL
 ○ ABANDONED OIL WELL * ABANDONED OIL & GAS WELL
 * ACTIVE GAS WELL ○ DRY HOLE
 * ABANDONED GAS WELL ○ NO RECORD
 COUNTY LINES TOWNSHIP LINES BOROUGH LINES SURFACE CONTOURS
 COAL CONTOURS CROP LINES - SEAM BEING MINED CROP LINES - SEAMS NOT BEING MINED



Elder Ridge 3 79°15' 40°45' Indiana 1
 SMICKSBURG SHEET N° 7
 W.P.A. PROJECT N° 19666
 Indiana 2