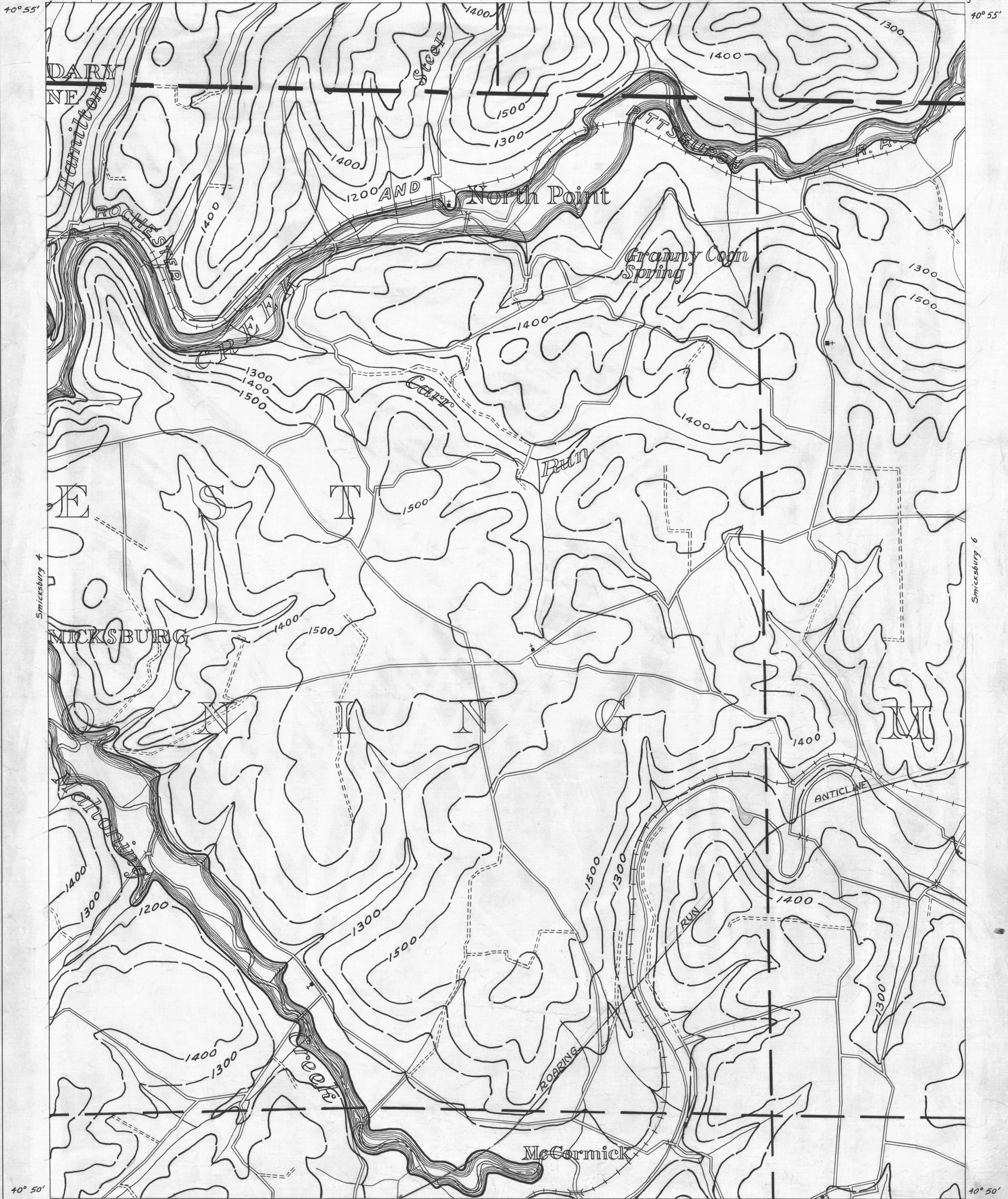


- ACTIVE OIL WELL
- ABANDONED OIL WELL
- ✱ ACTIVE GAS WELL
- ✱ ABANDONED GAS WELL
- ✱ ACTIVE OIL & GAS WELL
- ✱ ABANDONED OIL & GAS WELL
- DRY HOLE
- NO RECORD

- COUNTY LINES
- TOWNSHIP LINES
- BOROUGH LINES
- 980 COAL CONTOURS
- CROP LINES-SEAM BEING MINED
- CROP LINES-SEAMS NOT BEING MINED



- Y DRIFT OPENING
- Z SLOPE OPENING
- SHAFTS
- ▣ BARRIER PILLAR

0 1/2 1 2 MILES SMICKSBURG SHEET No. 5