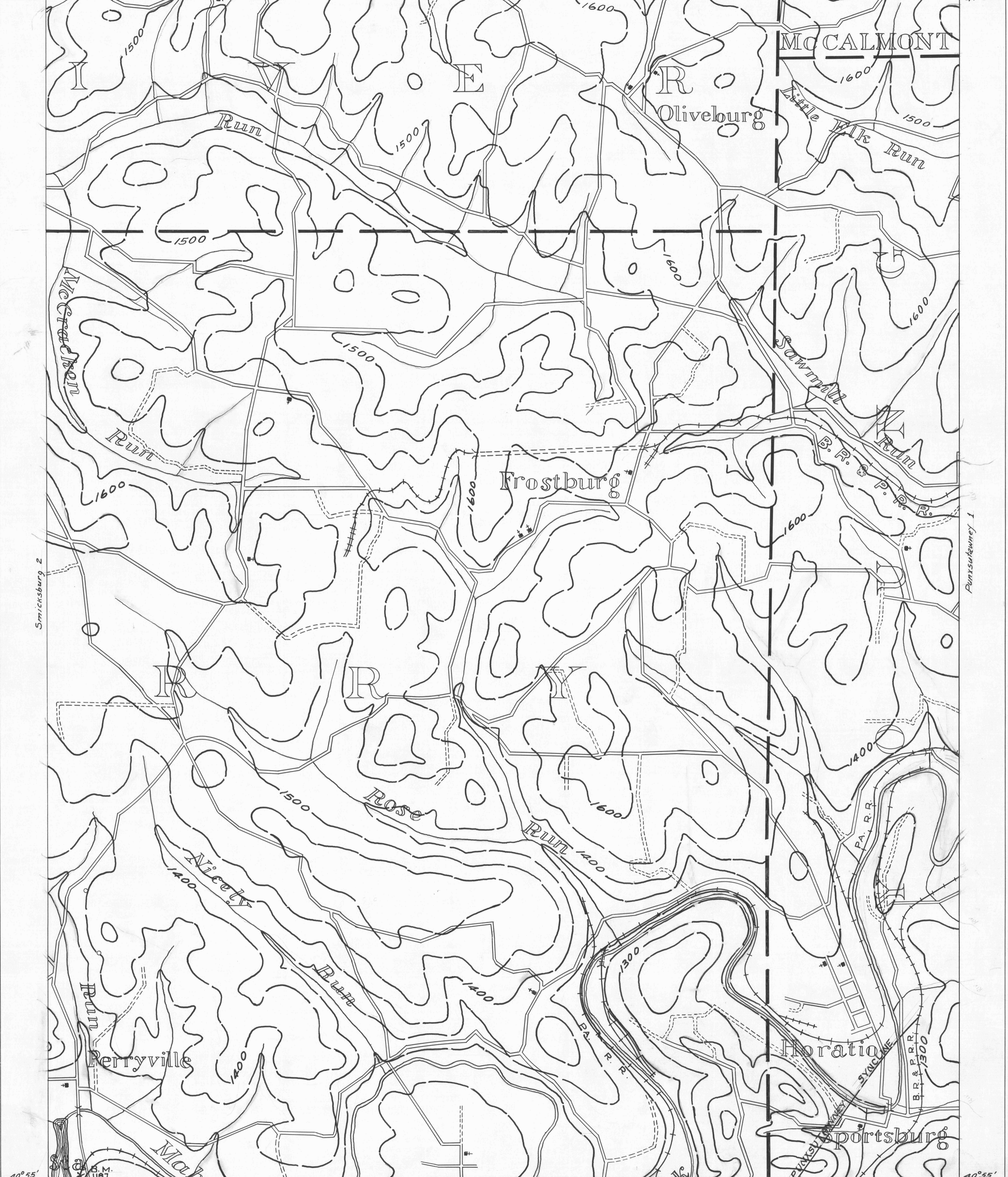


Brookville 8 79°05' 41°00' Brookville 9 COUNTY LINES COAL CONTOURS
 ABANDONED OIL WELL ACTIVE OIL & GAS WELL TOWNSHIP LINES CROP LINES - SEAM BEING MINED
 ACTIVE GAS WELL ABANDONED OIL & GAS WELL BOROUGH LINES CROP LINES - SEAMS NOT BEING MINED
 ABANDONED GAS WELL DRY HOLE SURFACE CONTOURS 79°00' Du Bois 7
41°00'



Smicksburg 5 79°05' 40°55' Smicksburg 6 2 MILES SMICKSBURG SHEET N°3
 B.M. 1187 DRIFT OPENING SLOPE OPENING SHAFTS BARRIER PILLAR
 PROJECT N° 19666 00957 Punkstunney 1 Punkstunney 7