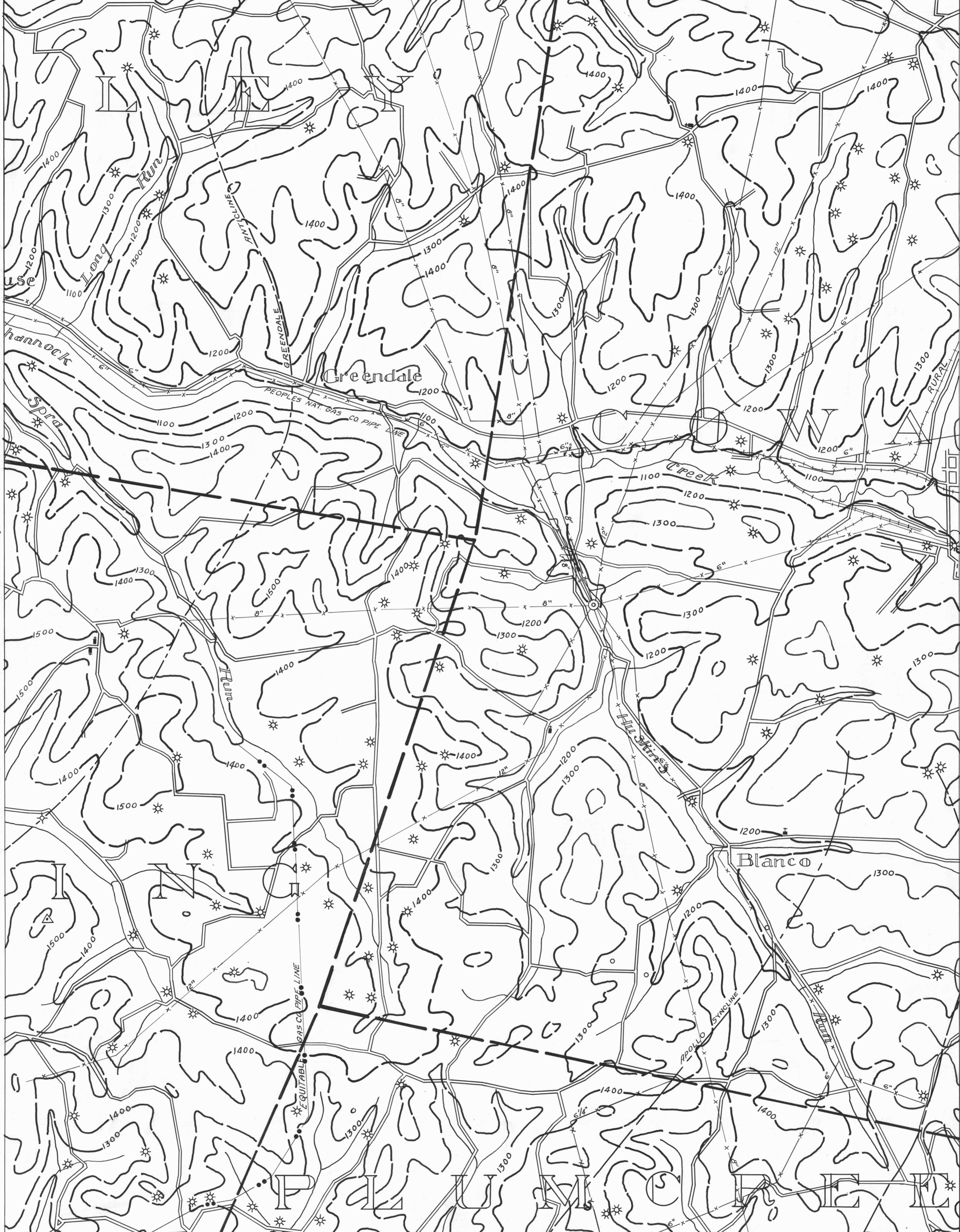


Rural Valley 4 79°25' 40°50' Rural Valley 5 Rural Valley 6 79°20' 40°50'

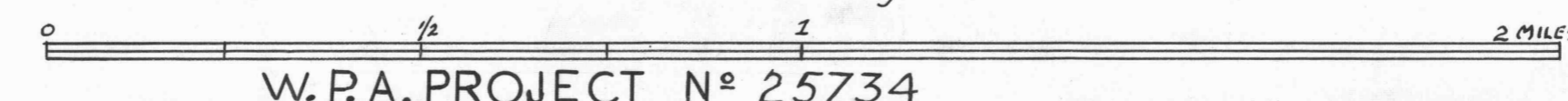
- ACTIVE OIL WELL
- ★ ACTIVE OIL & GAS WELL
- COUNTY LINES
- COAL CONTOURS
- ABANDONED OIL WELL
- ★ ABANDONED OIL & GAS WELL
- TOWNSHIP LINES
- CROP LINES- SEAM BEING MINED
- ACTIVE GAS WELL
- ★ DRY HOLE
- BOROUGH LINES
- CROP LINES- SEAMS NOT BEING MINED
- ABANDONED GAS WELL
- NO RECORD
- 1500 SURFACE CONTOURS

Rural Valley 5



Elders Ridge 2 79°25' 40°45' Elders Ridge 3

- DRIFT OPENING
- SLOPE OPENING
- SHAFTS
- ▨ BARRIER PILLAR



W.P.A. PROJECT N° 25734

RURAL VALLEY SHEET N° 8