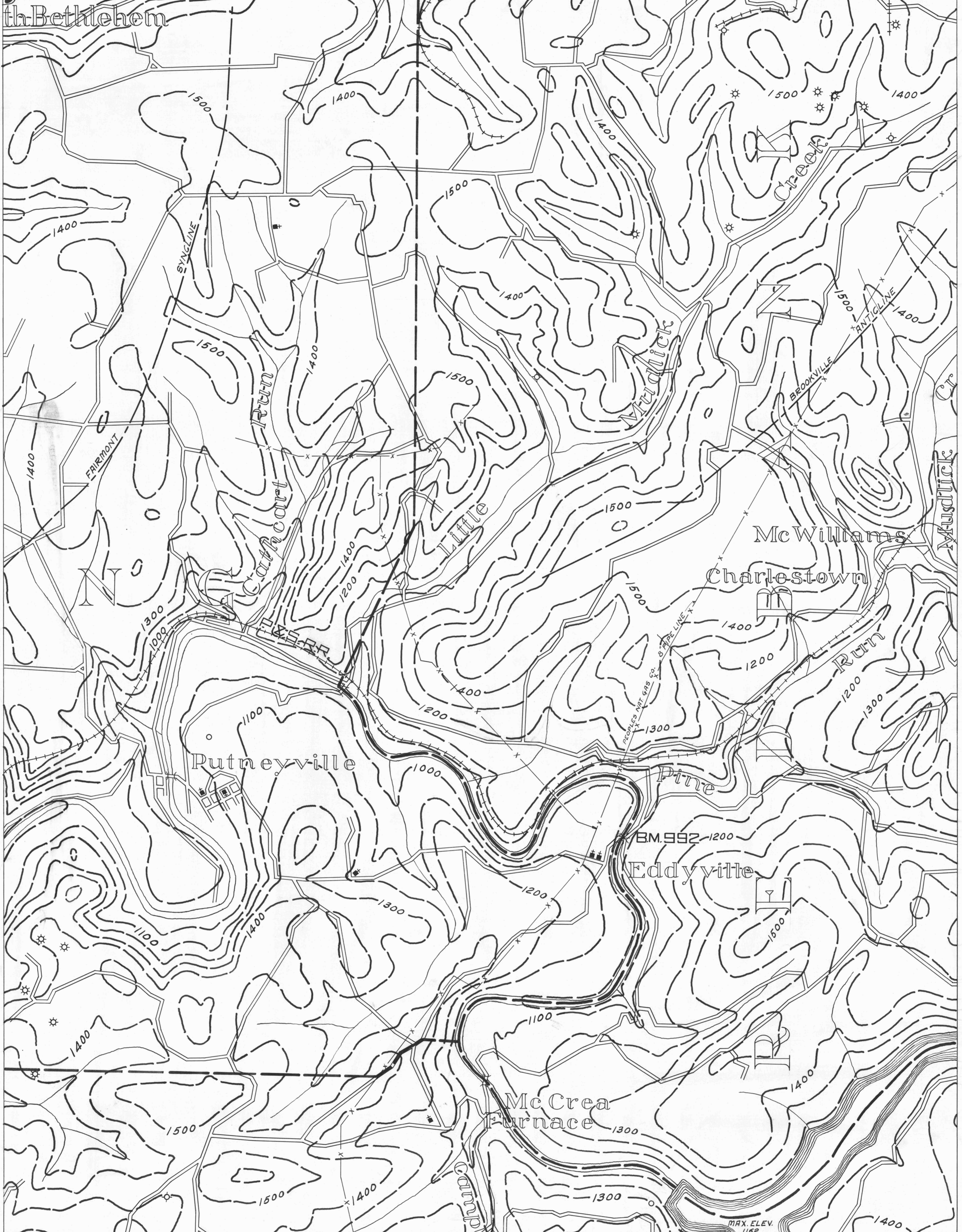


CLARION 9
 41°00' 79°15' BROOKVILLE 7

- ACTIVE OIL WELL
- ABANDONED OIL WELL
- ★ ACTIVE GAS WELL
- ABANDONED GAS WELL
- ★ ACTIVE OIL & GAS WELL
- ABANDONED OIL & GAS WELL
- DRY HOLE
- NO RECORD

- COUNTY LINES
- TOWNSHIP LINES
- BOROUGH LINES
- COAL CONTOURS
- CROP LINES SEAM BEING MINED
- CROP LINES SEAM NOT BEING MINED
- SURFACE CONTOURS



40°55' 79°20' RURAL VALLEY 6
 40°55' 79°15' SMICKSBURG 4

WPA PROJECT NO 25734

RURAL VALLEY SHEET NO 3

- DRIFT OPENING
- SLOPE OPENING
- SHAFTS
- ▨ BARRIER PILLAR

MAX. ELEV. 1162