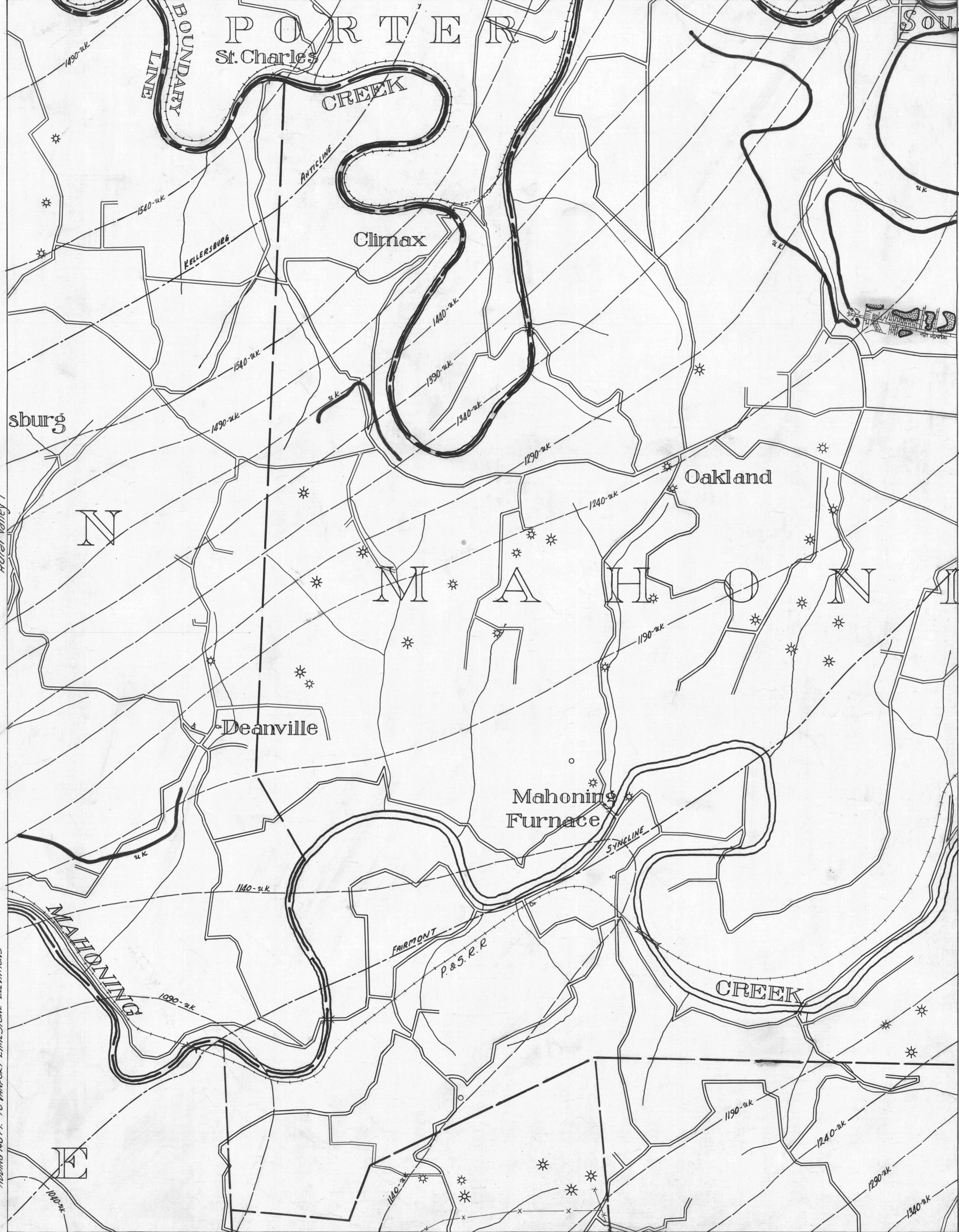


Clarion 7 79°25' 41°00' 79°20' Clarion 9

- ACTIVE OIL WELL
- \* ACTIVE OIL & GAS WELL
- ABANDONED OIL WELL
- \* ABANDONED OIL & GAS WELL
- \* ACTIVE GAS WELL
- ◇ DRY HOLE
- \* ABANDONED GAS WELL
- NO RECORD

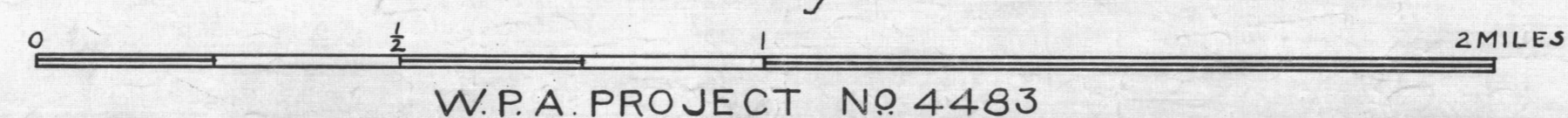
Clarion 8

- COUNTY LINES
- TOWNSHIP LINES
- - - BOROUGH LINES
- COAL CONTOURS
- CROP LINES - SEAM BEING MINED
- CROP LINES - SEAMS NOT BEING MINED



NOTE: COAL CONTOURS MARKED (u.k.) ARE FOR UPPER KITTANNING SEAM AND ARE DERIVED BY ADDING 140 FT. TO HANCOCK LIMESTONE ELEVATIONS

Y DRIFT OPENING  
 Z SLOPE OPENING  
 □ SHAFTS  
 ■ BARRIER PILLAR



W.P.A. PROJECT NO. 4483

RURAL VALLEY SHEET No. 2  
(C) - U.K. SEAM

Rural Valley 6 40°55' 79°25'