

Rogersville 5
39° 50'

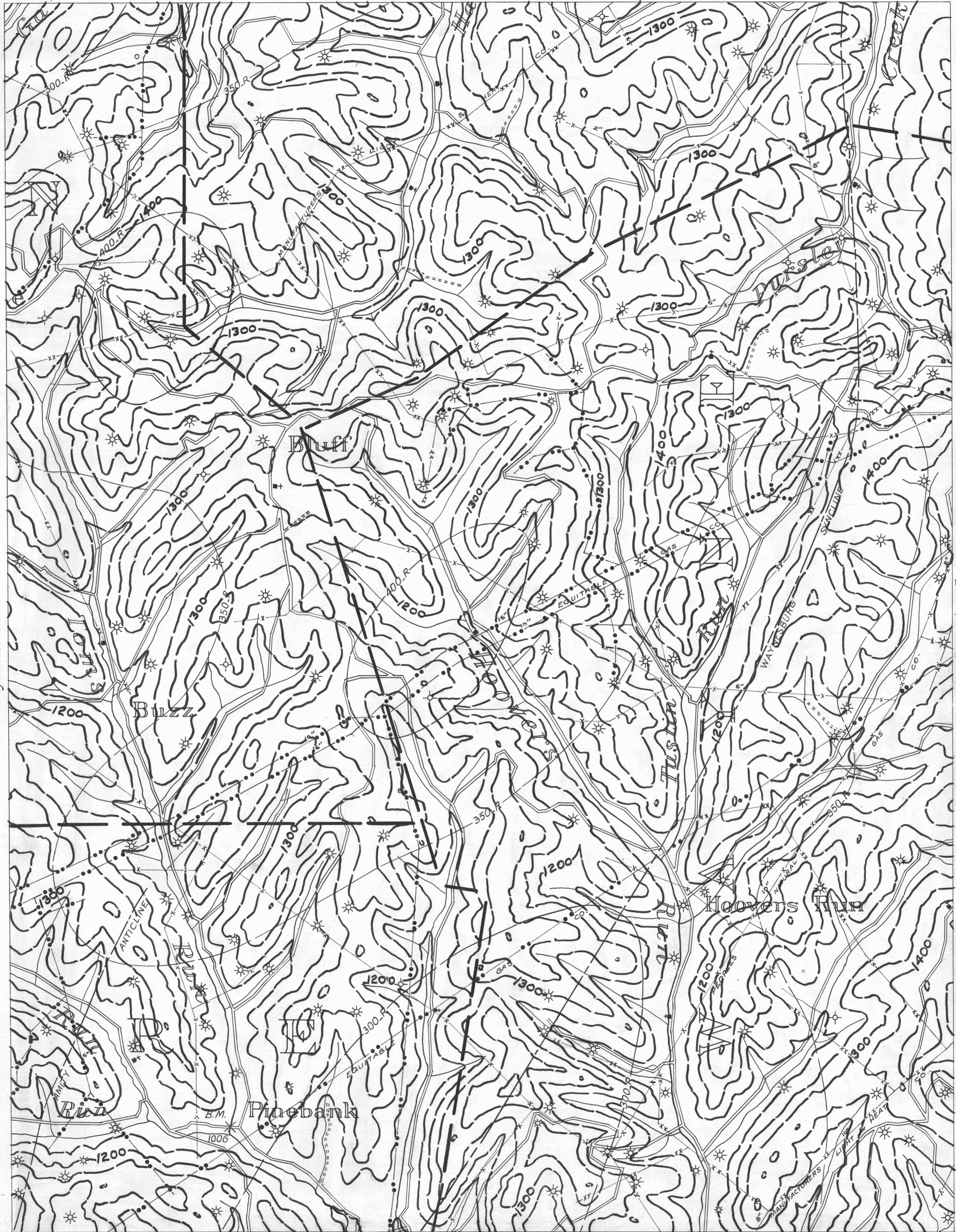
- ACTIVE OIL WELL
- ABANDONED OIL WELL
- ✱ ACTIVE GAS WELL
- ✱ ABANDONED GAS WELL
- ✱ ACTIVE OIL & GAS WELL
- ✱ ABANDONED OIL & GAS WELL
- DRY HOLE
- NO RECORD

- COUNTY LINES
- TOWNSHIP LINES
- BOROUGH LINES
- COAL CONTOURS
- CROP LINES-SEAM BEING MINED
- CROP LINES-SEAMS NOT BEING MINED

Rogersville 6.

- COUNTY LINES
- TOWNSHIP LINES
- BOROUGH LINES
- COAL CONTOURS
- CROP LINES-SEAM BEING MINED
- CROP LINES-SEAMS NOT BEING MINED

80° 15'
39° 50'
WAYNESBURG 4



NOTE:—
CONTOURS MARKED "R" ARE
TAKEN FROM GEOLOGIC ATLAS,
ROGERSVILLE FOLIO.

39° 45'
80° 20'

- DRIFT OPENING
- SLOPE OPENING
- SHAFTS
- ▣ BARRIER PILLAR

Mannington 3.

ROGERSVILLE SHEET No. 9.
PITTSBURGH SEAM

W.P.A. PROJECT NO.4483

80° 15'
39° 45'
Backsville 1.