

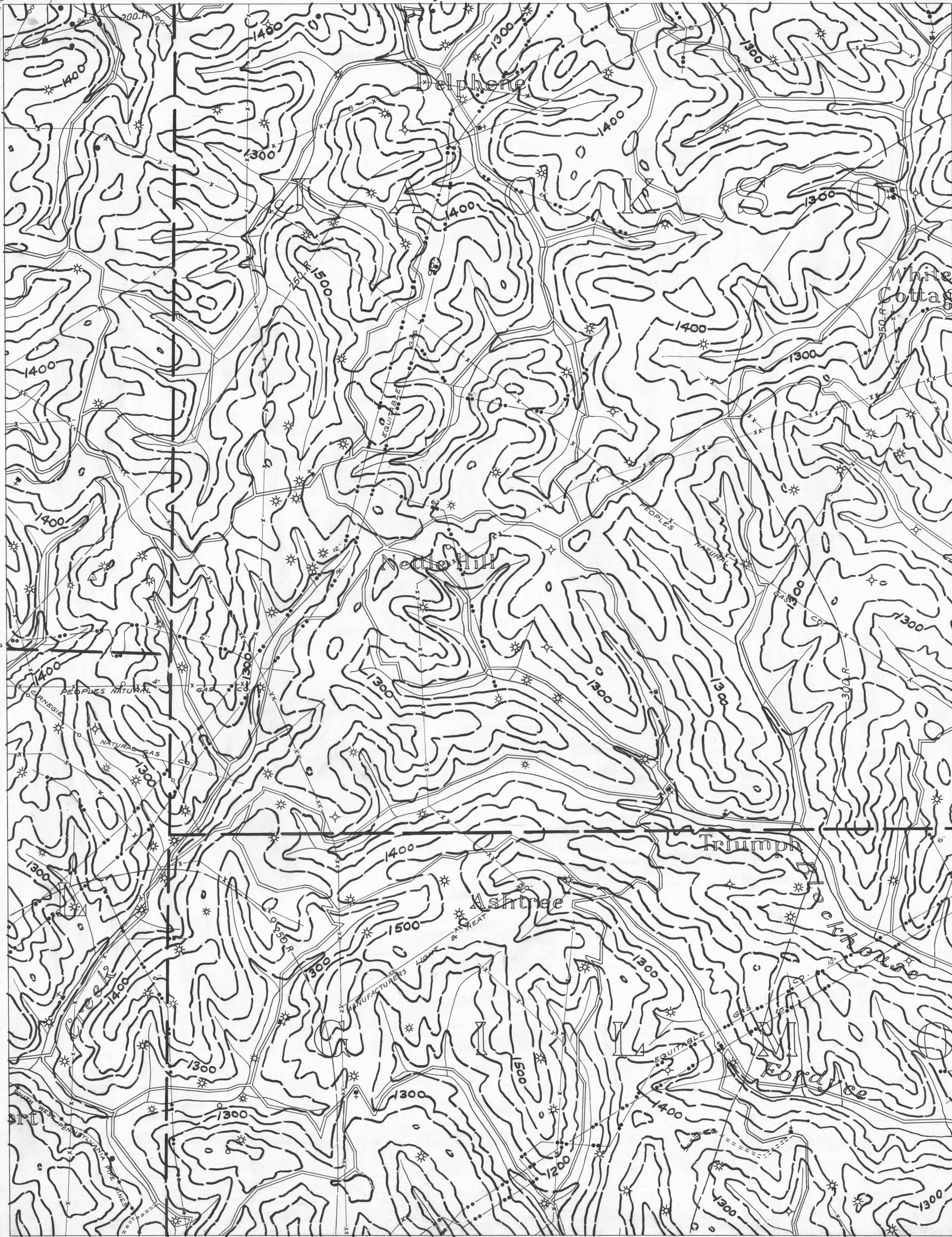
Rogersville 4
39° 50'

- ACTIVE OIL WELL
- ABANDONED OIL WELL
- ★ ACTIVE GAS WELL
- ★ ABANDONED GAS WELL
- ★ ACTIVE OIL & GAS WELL
- ★ ABANDONED OIL & GAS WELL
- DRY HOLE
- NO RECORD

Rogersville 5

- COUNTY LINES
- TOWNSHIP LINES
- BOROUGH LINES
- 980 COAL CONTOURS
- CROP LINES-SEAM BEING MINED
- CROP LINES-SEAMS NOT BEING MINED

Rogersville 6
39° 50'



Rogersville 7

Rogersville 9

NOTE:-
CONTOURS MARKED 'R' ARE
TAKEN FROM GEOLOGIC ATLAS,
ROGERSVILLE FOLIO.

39° 45'
MANNINGTON 1
60° 25'

- DRIFT OPENING
- SLOPE OPENING
- SHAFTS
- ▨ BARRIER PILLAR

Mannington 2.

W.P.A. PROJECT NO. 4483

2 MILES.

PITTSBURGH SEAM
ROGERSVILLE SHEET No. 8.

39° 45'
MANNINGTON 3
60° 20'