

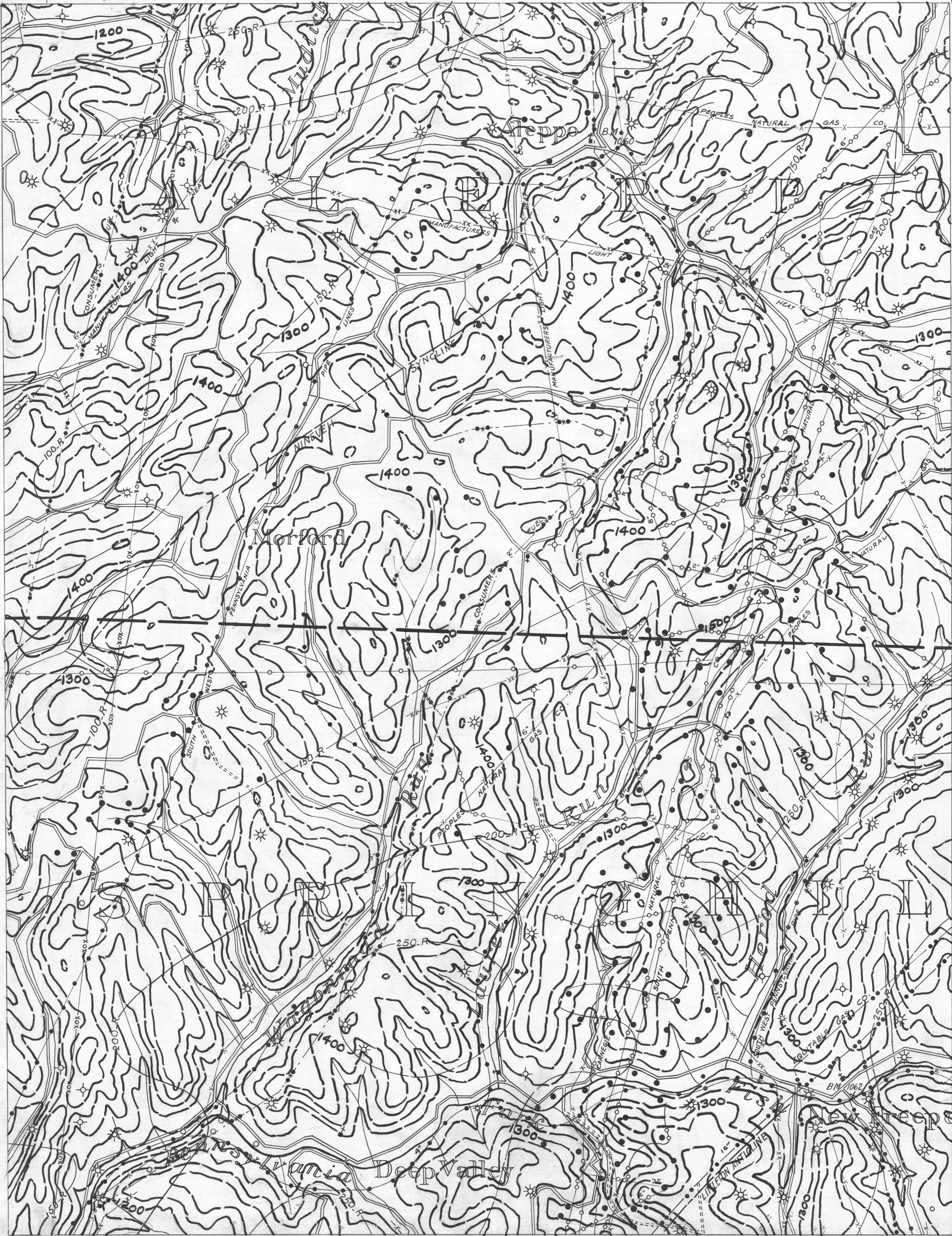
Cameron 9
39° 50'

- ACTIVE OIL WELL
- ABANDONED OIL WELL
- ★ ACTIVE GAS WELL
- ★ ABANDONED GAS WELL
- ★ ACTIVE OIL & GAS WELL
- ★ ABANDONED OIL & GAS WELL
- DRY HOLE
- NO RECORD

Rogersville 4.

- COUNTY LINES
- TOWNSHIP LINES
- BOROUGH LINES
- COAL CONTOURS
- CROP LINES—SEAM BEING MINED
- CROP LINES—SEAMS NOT BEING MINED

Rogersville 5
39° 50'

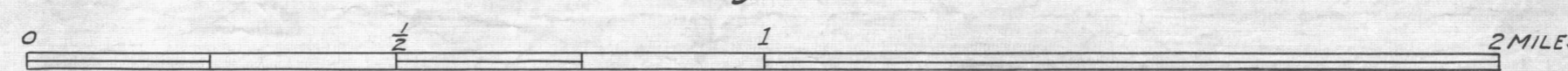


Cameron 9

Rogersville 8

Littleton 3
39° 45'
80° 30'

- DRIFT OPENING
- SLOPE OPENING
- SHAFTS
- ▨ BARRIER PILLAR



W.P.A. PROJECT NO. 4483

PITTSBURGH SEAM
ROGERSVILLE SHEET No 7.

Mannington 2
39° 45'
80° 30'

Mannington 1.