

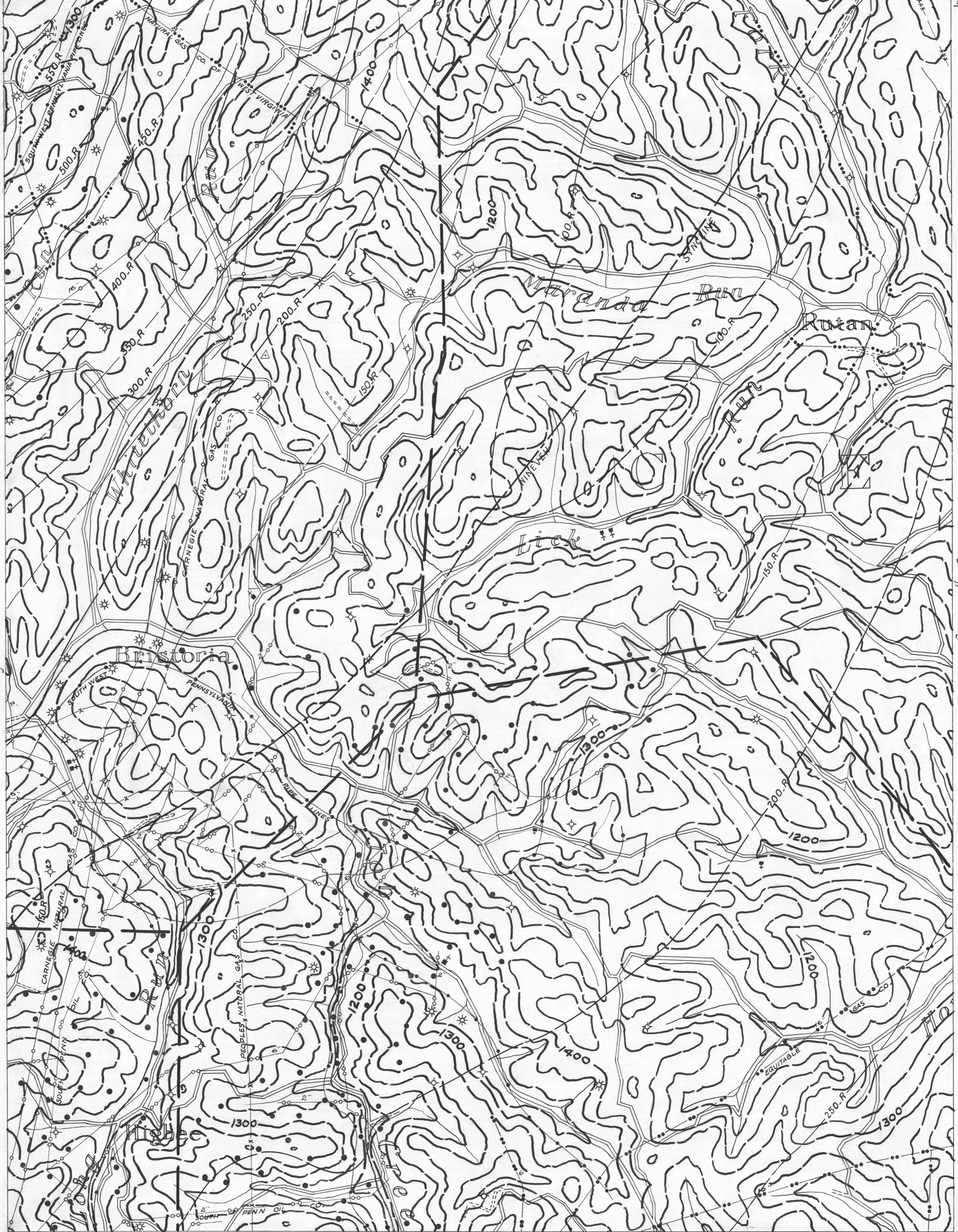
Rogersville 1
39°55'

- ACTIVE OIL WELL
- ABANDONED OIL WELL
- ★ ACTIVE GAS WELL
- ✱ ABANDONED GAS WELL
- ✱ ACTIVE OIL & GAS WELL
- ✱ ABANDONED OIL & GAS WELL
- ◇ DRY HOLE
- NO RECORD

Rogersville 2

- COUNTY LINES
- TOWNSHIP LINES
- BOROUGH LINES
- 980 COAL CONTOURS
- CROP LINES-SEAM BEING MINED
- - - CROP LINES-SEAMS NOT BEING MINED

Rogersville 3
80°20'
39°55'



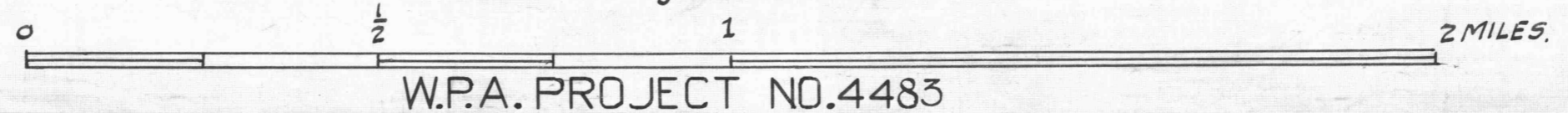
Rogersville 4

Rogersville 6

NOTE: CONTOURS MARKED "R" ARE TAKEN FROM GEOLOGIC ATLAS ROGERSVILLE FOLIO.

- DRIFT OPENING
- SLOPE OPENING
- SHAFTS
- ▨ BARRIER PILLAR

Rogersville 8



W.P.A. PROJECT NO. 4483

PITTSBURGH SEAM
ROGERSVILLE SHEET No 5

39°50'
Rogersville 7
80°25'17"

39°50'
Rogersville 7
80°25'08"