

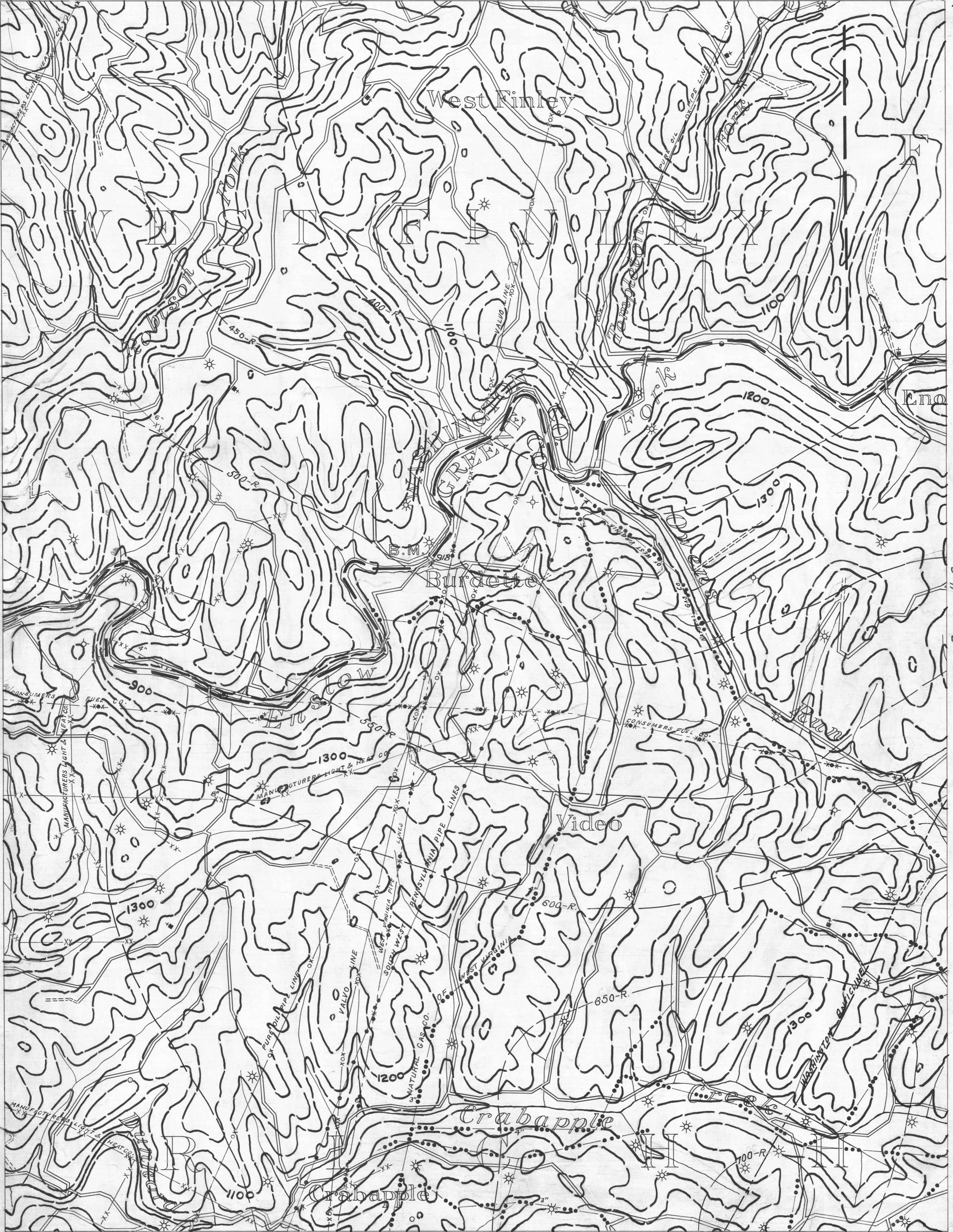
- ACTIVE OIL WELL
- ABANDONED OIL WELL
- ★ ACTIVE GAS WELL
- ABANDONED GAS WELL
- ★ ACTIVE OIL & GAS WELL
- ABANDONED OIL & GAS WELL
- DRY HOLE
- NO RECORD

- COUNTY LINES
- TOWNSHIP LINES
- BOROUGH LINES
- 500 COAL CONTOUR
- CROP LINES - SEAM BEING MINED
- CROP LINES - SEAMS NOT BEING MINED

Wheeling 9
40° 00'

90° 25'
40° 00'

Claysville 7.



Cameron 3

Rogersville 2

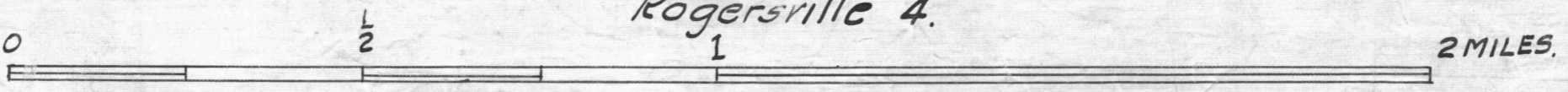
NOTE: CONTOURS MARKED "R" ARE TAKEN FROM GEOLOGIC ATLAS, ROGERSVILLE FOLIO.

39° 55'
CAMERON 6

90° 25'
39° 55'

Rogersville 4.

- Y DRIFT OPENING
- Z SLOPE OPENING
- SHAFTS
- ▨ BARRIER PILLAR



W.P.A. PROJECT NO. 4483

PITTSBURGH SEAM
ROGERSVILLE SHEET No. 1.