

NOTE -  
LOWER FREEPORT COAL CONTOURS ARE  
DERIVED BY SUBTRACTING 50 FEET  
FROM UPPER FREEPORT COAL CONTOURS.

Smicksburg-9

Smicksburg-6

- ▣ BARELY PILLAR
- ▣ SHAFTS
- SLOPE OPENING
- DRIFT OPENING

W.P.A. PROJECT No 4483

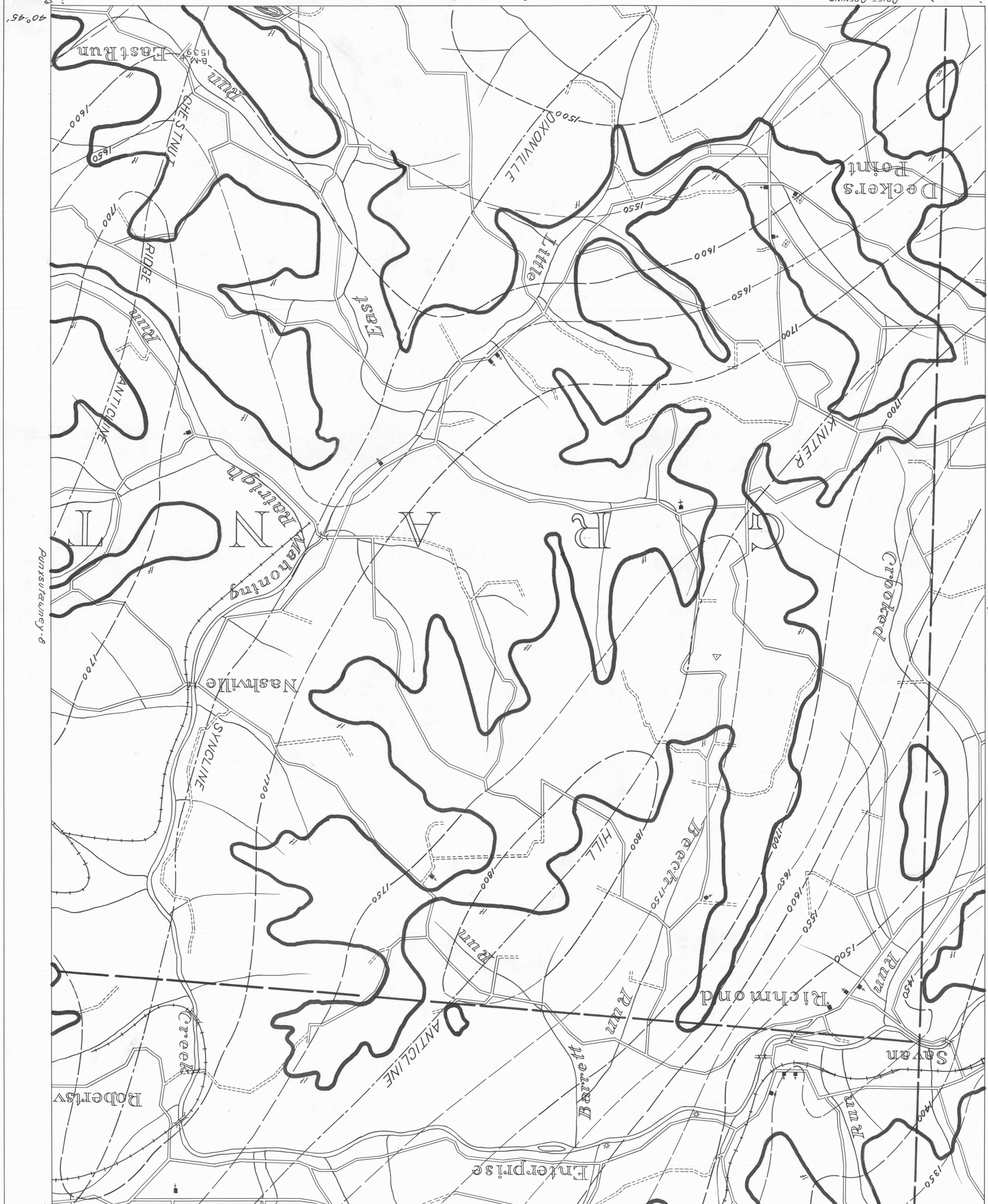
PUNXSUTAWNEY SHEET No 7  
Lower Freeport (H) Seam

Barnesboro-2

Punxsutawney-5

- ACTIVE OIL WELL
- ABANDONED OIL WELL
- ★ ACTIVE OIL & GAS WELL
- ABANDONED OIL & GAS WELL
- ◇ DRY HOLE
- NO RECORD
- ★ ABANDONED GAS WELL
- ABANDONED GAS WELL

- COAL CONTOURS
- CROPLINES-SEAM BEING MINED
- CROPLINES-STAMS NOT BEING MINED
- TOWNSHIP LINES
- BOROUGH LINES
- PUNXSUTAWNEY-4



40° 45'

40° 45'

40° 50'

40° 50'