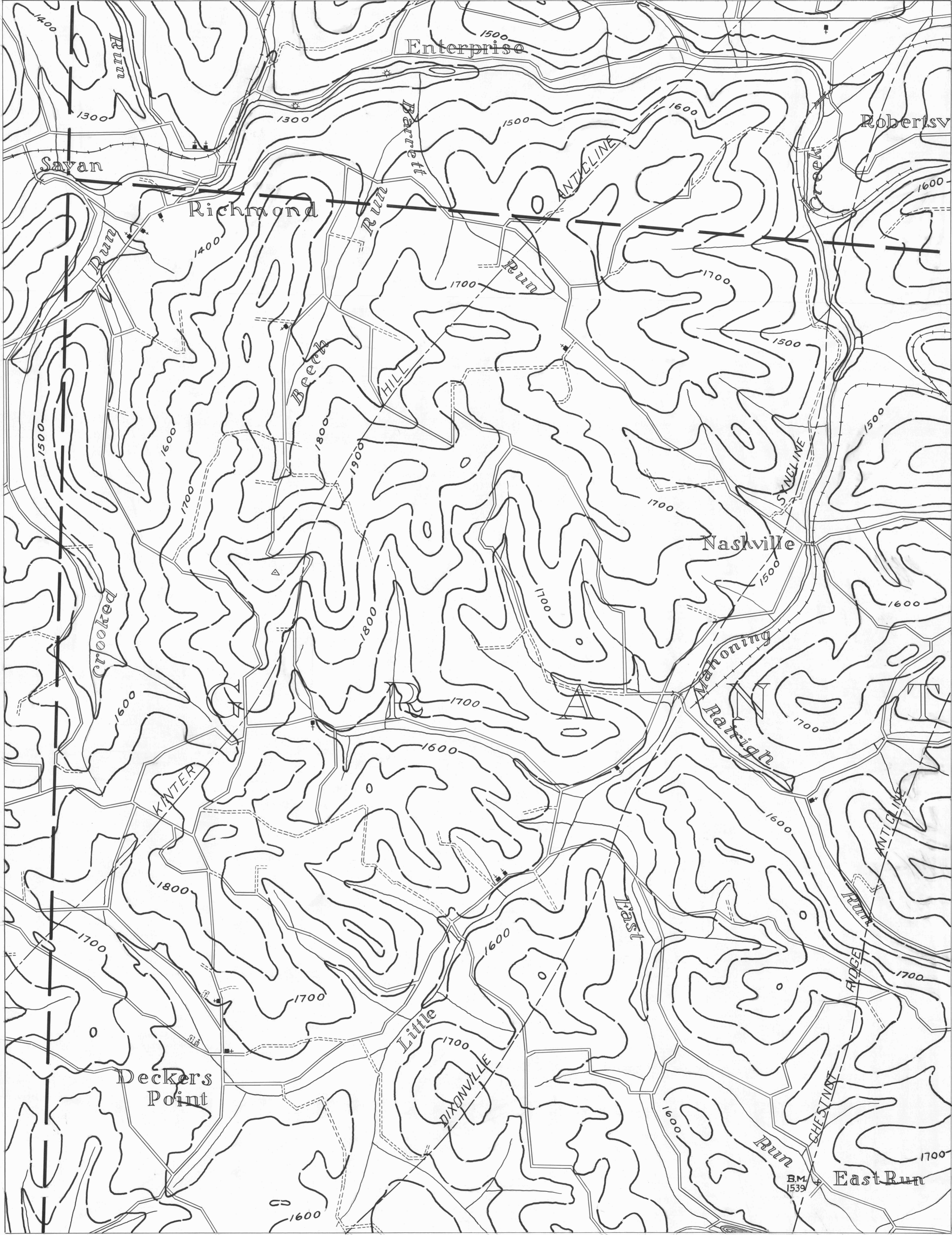


SMICKSBURG-6 79°00' 40°50' PUNXSUTAWNEY-4 1900 1000 COUNTY LINES TOWNSHIP LINES BOROUGH LINES SURFACE CONTOURS COAL CONTOURS CROP LINES - SEAM BEING MINED CROP LINES - SEAMS NOT BEING MINED 78°55' PUNXSUTAWNEY-5 40°50'

- ACTIVE OIL WELL
- ABANDONED OIL WELL
- ★ ACTIVE GAS WELL
- ⊛ ABANDONED GAS WELL
- ★ ACTIVE OIL & GAS WELL
- ⊛ ABANDONED OIL & GAS WELL
- ◇ DRY HOLE
- NO RECORD



INDIANA-3 79°00' 40°45' BARNESBORO-1 PUNXSUTAWNEY SHEET N°7 2 MILES W.P.A. PROJECT N° 19666 78°55' BARNESBORO-2 40°45'

- DRIFT OPENING
- SLOPE OPENING
- SHAFTS
- ▨ BARRIER PILLAR