

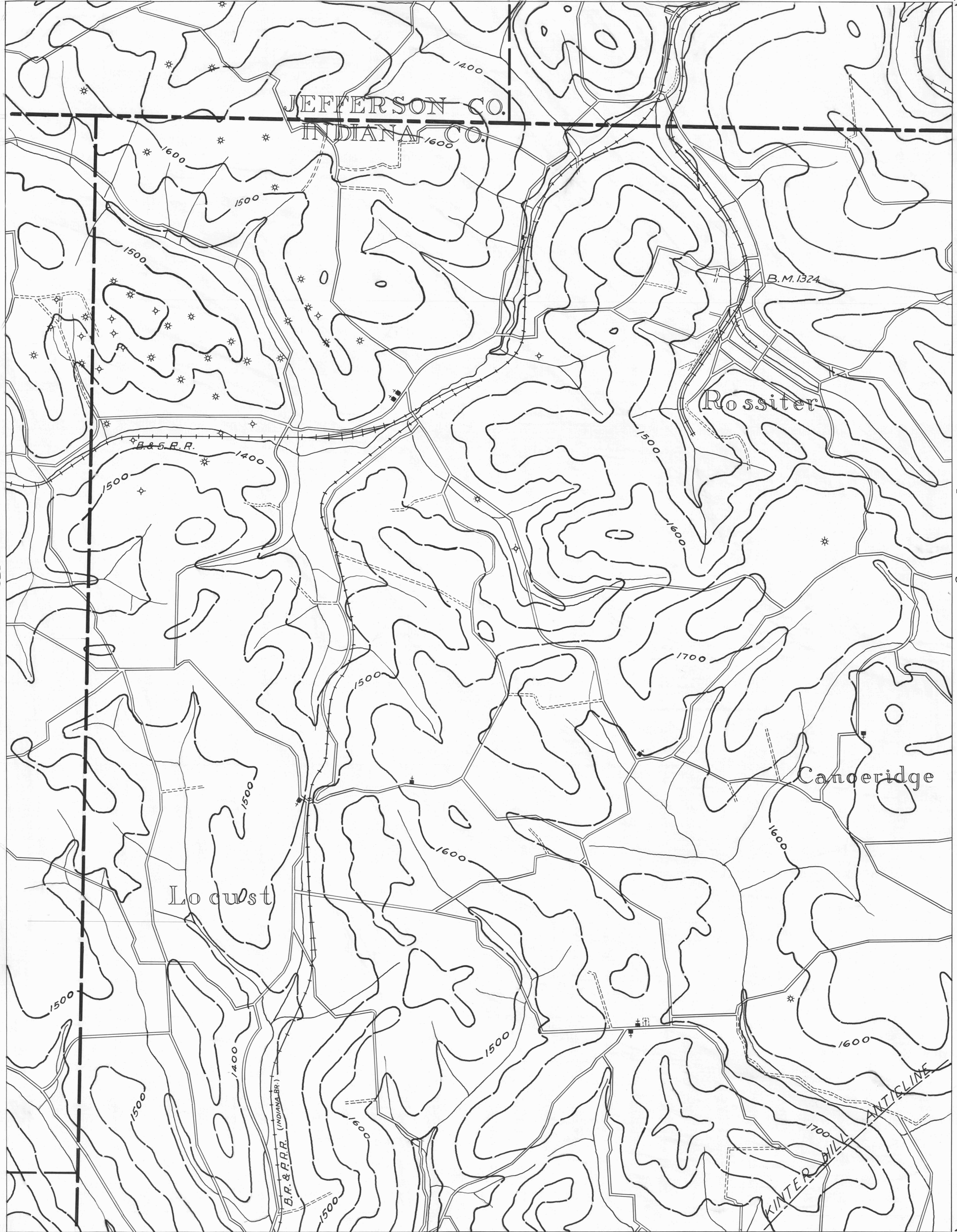
SMICKSBURG-3 79°00' 40°10' PUNXSUTAWNEY-1

- ACTIVE OIL WELL
- ABANDONED OIL WELL
- ★ ACTIVE GAS WELL
- ◇ ABANDONED GAS WELL
- NO RECORD

- ★ ACTIVE OIL & GAS WELL
- ★ ABANDONED OIL & GAS WELL
- ◇ DRY HOLE
- NO RECORD

- COUNTY LINES
- TOWNSHIP LINES
- BOROUGH LINES
- 1700 CONTOUR LINES
- 000 COAL CONTOURS
- CROP LINES-SEAM BEING MINED
- CROP LINES-SEAMS NOT BEING MINED

78°55' 40°10' PUNXSUTAWNEY-2



SMICKSBURG-9 79°00' 40°05' PUNXSUTAWNEY-7 2 MILES PUNXSUTAWNEY SHEET-N4 78°55' 40°05' PUNXSUTAWNEY-8

- Y DRIFT OPENING
- Z SLOPE OPENING
- SHAFTS
- ▨ BARRIER PILLAR

W.P.A. PROJECT NO. 19666