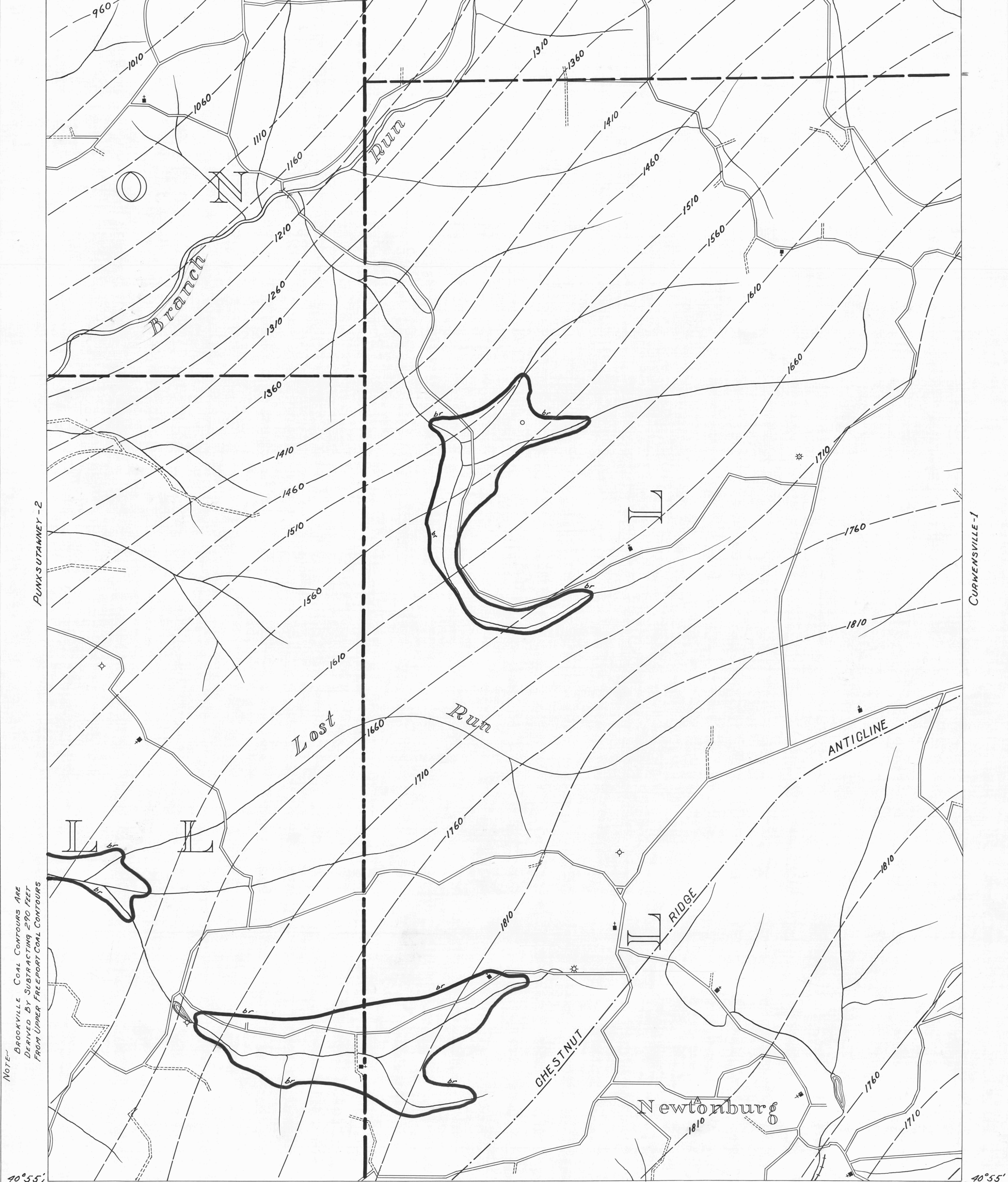
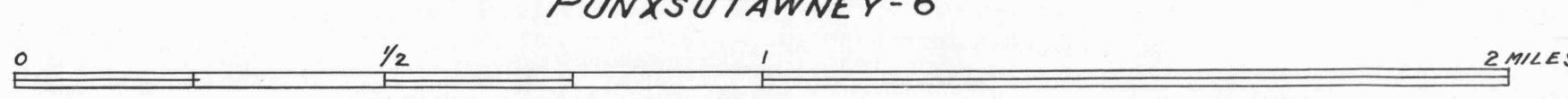


Du Bois-9  
 78° 50'  
 41° 00'  
 ACTIVE OIL WELL  
 ABANDONED OIL WELL  
 ACTIVE GAS WELL  
 ABANDONED GAS WELL  
 ACTIVE OIL & GAS WELL  
 ABANDONED OIL & GAS WELL  
 DRY HOLE  
 NO RECORD  
 COUNTY LINES  
 TOWNSHIP LINES  
 BOROUGH LINES  
 980 COAL CONTOURS  
 CROP LINES-SEAM BEING MINED  
 CROP LINES-SEAMS NOT BEING MINED  
 78° 45'  
 Pentfield-7  
 41° 00'



NOTE-  
 BROOKVILLE COAL CONTOURS ARE  
 DERIVED BY SUBTRACTING 290 FEET  
 FROM UPPER FREEPORT COAL CONTOURS

40° 55'  
 78° 50'  
 PUNXSUTAWNEY-5  
 DIRT OPENING  
 SLOPE OPENING  
 SHAFTS  
 BARRIER PILLAR



W.P.A. PROJECT NO 19666

PUNXSUTAWNEY SHEET No 3  
 Brookville Seam - br

40° 55'  
 78° 45'  
 Curwensville-4