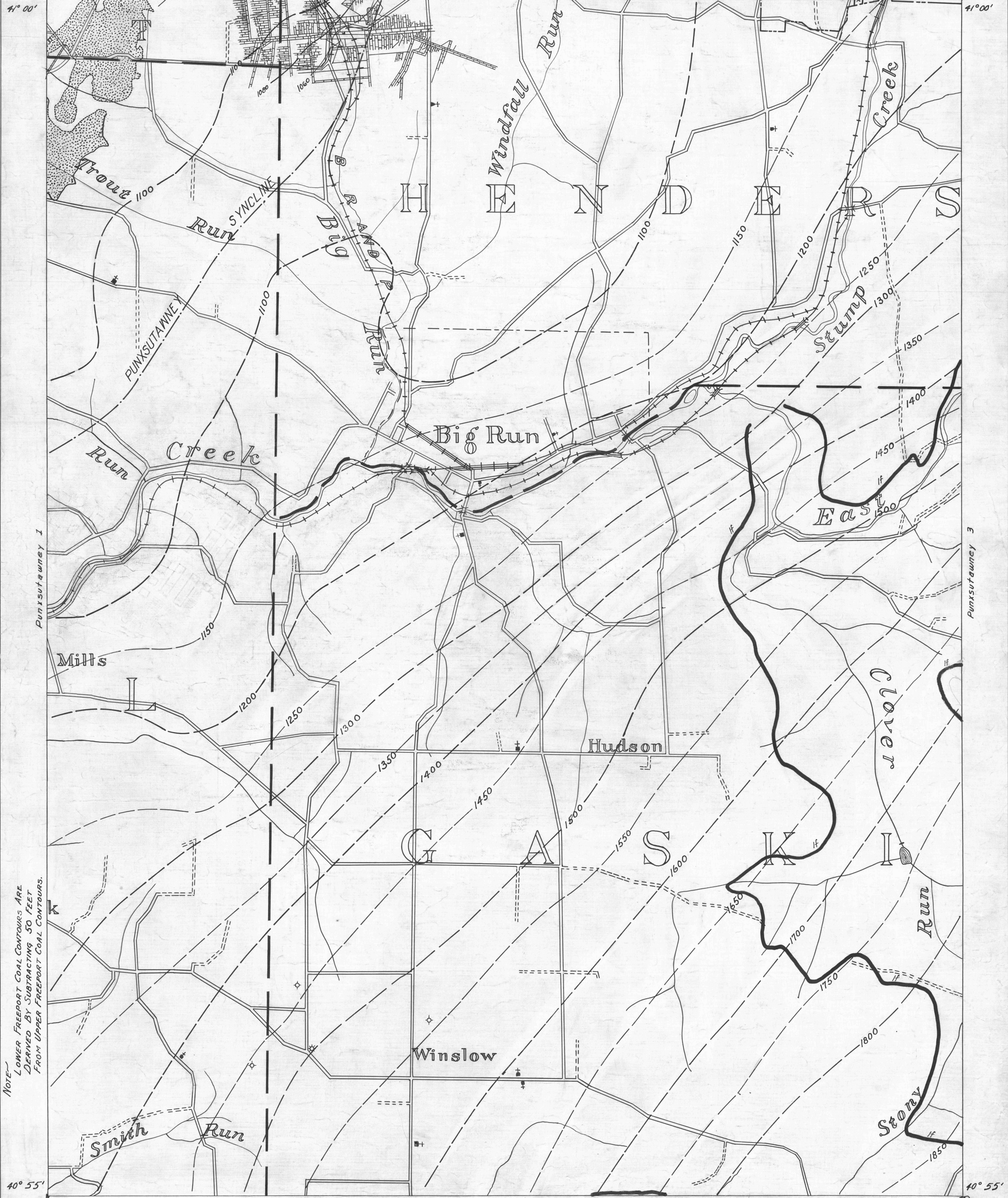


Du Bois 7 78° 55' 41° 00' Du Bois 8 Du Bois 9 78° 50' 41° 00'

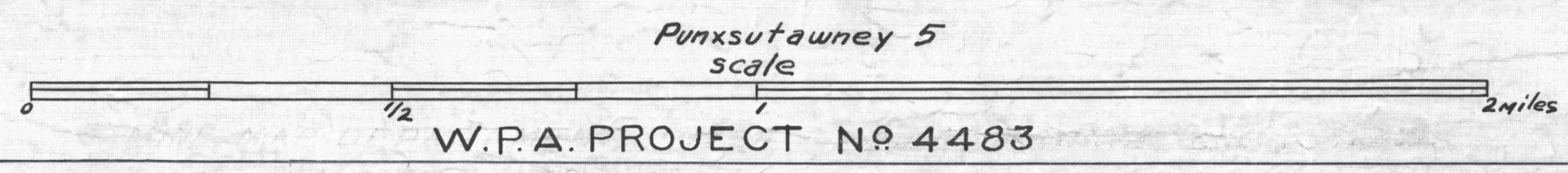
- ACTIVE OIL WELL
- ◊ ABANDONED OIL WELL
- * ACTIVE GAS WELL
- ◊ ABANDONED GAS WELL
- * ACTIVE OIL & GAS WELL
- * ABANDONED OIL & GAS WELL
- ◊ DRY HOLE
- NO RECORD

- COUNTY LINES
- - - TOWNSHIP LINES
- - - BOROUGHS LINES
- 980' COAL CONTOURS
- - - CROP LINES-SEAM BEING MINED
- - - CROP LINES-SEAMS NOT BEING MINED



NOTE: LOWER FREEPORT COAL CONTOURS ARE DERIVED BY SUBTRACTING 50 FEET FROM UPPER FREEPORT COAL CONTOURS.

- Y DRIFT OPENING
- Z SLOPE OPENING
- SHAFTS
- ▨ BARRIER PILLAR



W.P.A. PROJECT No 4483

PUNXSUTAWNEY SHEET No. 2
 Lower Freeport Seam-If.

PUNX #2