

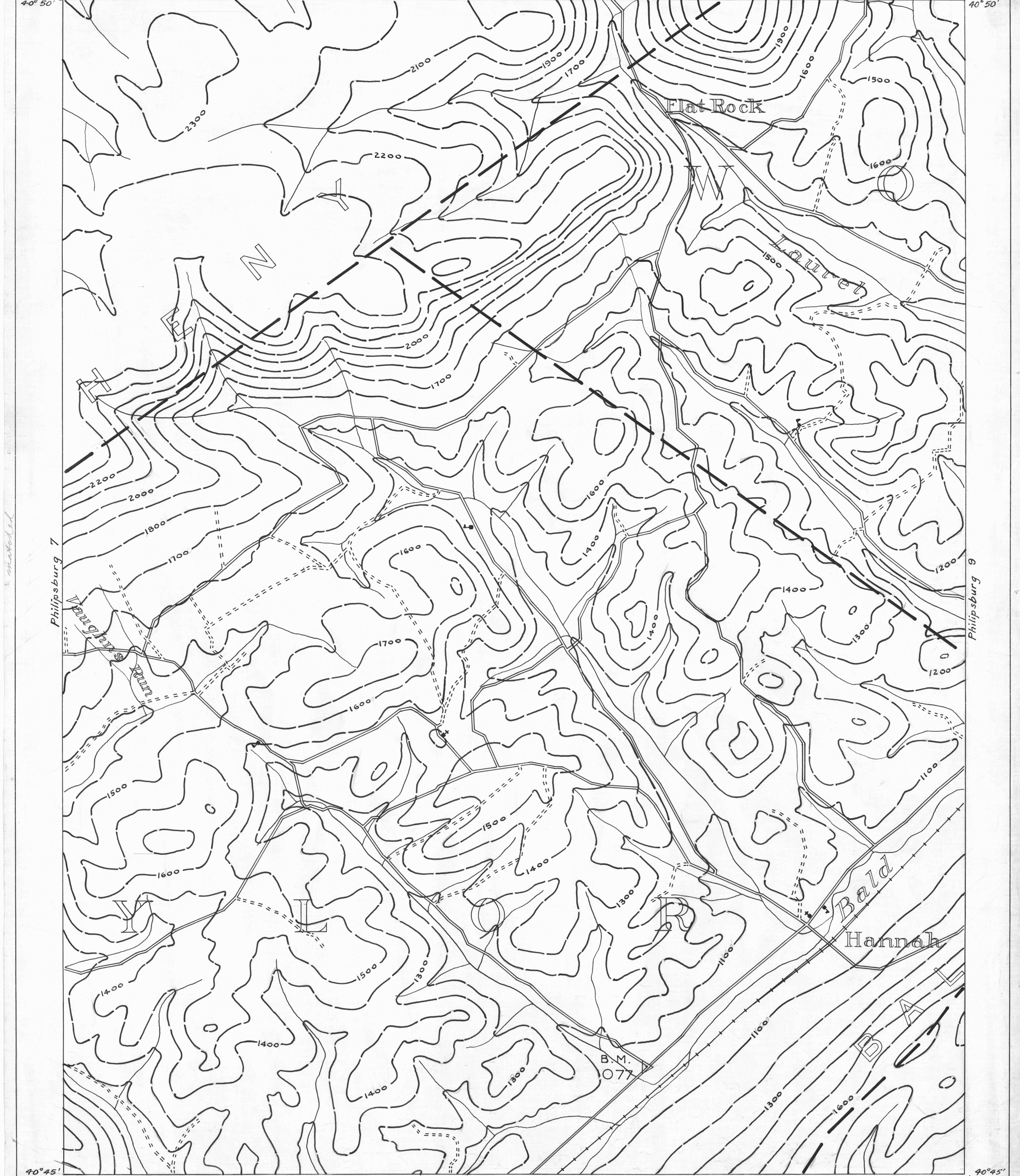
Philipsburg 5

● ACTIVE OIL WELL * ACTIVE OIL & GAS WELL
 ○ ABANDONED OIL WELL * ABANDONED OIL & GAS WELL
 ✖ ACTIVE GAS WELL ◊ DRY HOLE
 ✖ ABANDONED GAS WELL ○ NO RECORD

——— COUNTY LINES
 - - - - - TOWNSHIP LINES
 - - - - - BOROUGH LINES

000 COAL CONTOURS
 - - - - - CROP LINES - SEAM BEING MINED
 - - - - - CROP LINES - SEAMS NOT BEING MINED

40° 50' 78° 05' Philipsburg 6



40° 45' 78° 10' Tyrone 2 2 MILES PHILPSBURG SHEET No. 8. Tyrone 3

Y DRIFT OPENING
 Z SLOPE OPENING
 □ SHAFTS
 ▨ BARRIER PILLAR

W.P.A. PROJECT NO 4483