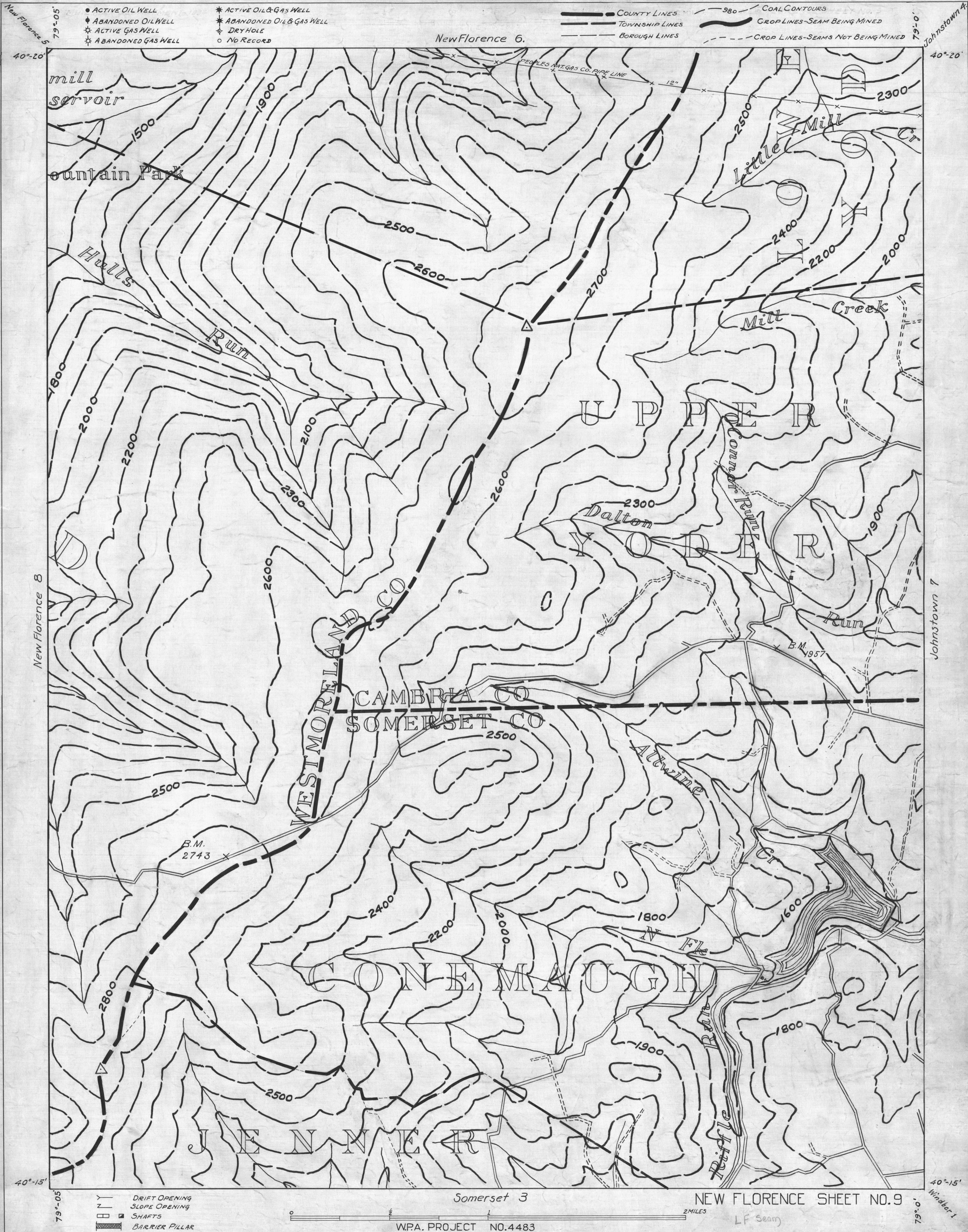


matched



- ACTIVE OIL WELL
- ◐ ABANDONED OIL WELL
- ⊛ ACTIVE GAS WELL
- ⊛ ABANDONED GAS WELL

- \* ACTIVE OIL & GAS WELL
- \* ABANDONED OIL & GAS WELL
- ◇ DRY HOLE
- NO RECORD

- COUNTY LINES
- TOWNSHIP LINES
- BOROUGH LINES
- 980' COAL CONTOURS
- CROP LINES—SEAM BEING MINED
- CROP LINES—SEAMS NOT BEING MINED

New Florence 6.

WESTMORELAND CO

CAMBRIA CO  
SOMERSET CO

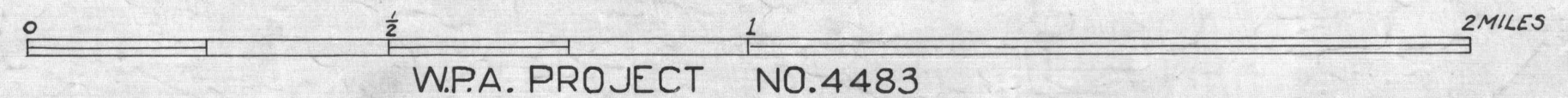
CONEMAUGH

JEFFERSON

Somerset 3

NEW FLORENCE SHEET NO. 9

- Y DRIFT OPENING
- Z SLOPE OPENING
- SHAFTS
- ▨ BARRIER PILLAR



W.P.A. PROJECT NO. 4483

LF Seam

NF-9

matched