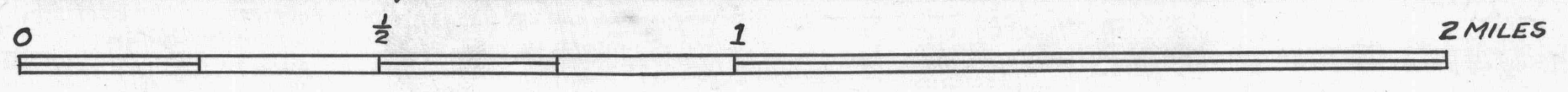


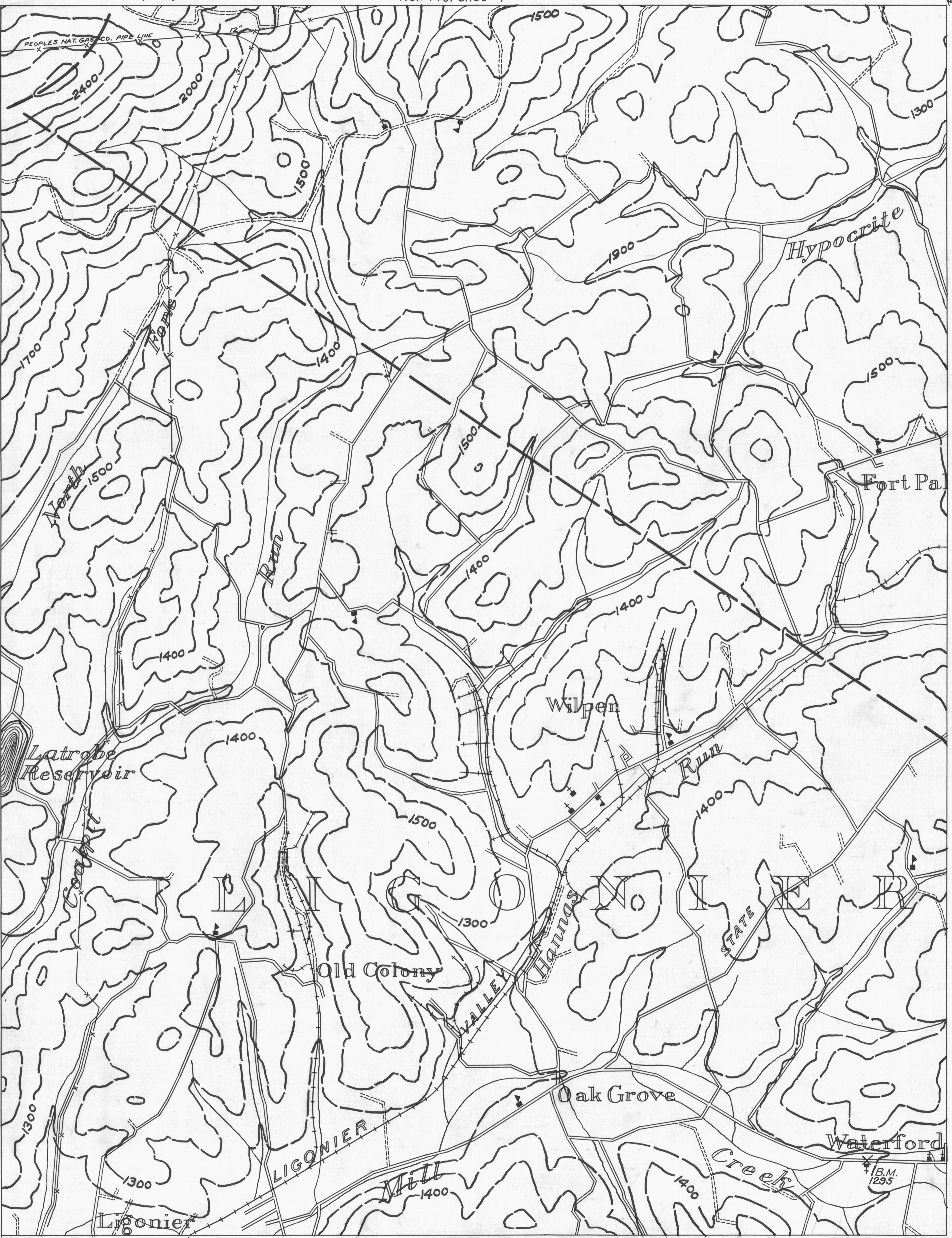
Latrobe 6
79°15'
40°20'

79°10'
New Florence 5
40°20'

- DRIFT OPENING
- SLOPE OPENING
- SHAFTS
- ▨ BARRIER PILLAR



New Florence 4



Latrobe 9

New Florence 8

40°15'
79°15'
Donegal 3

40°15'
Somerset 2

- ACTIVE OIL WELL
- ◆ ABANDONED OIL WELL
- ★ ACTIVE GAS WELL
- ✱ ABANDONED GAS WELL
- ✧ DRY HOLE
- NO RECORD
- ★ ACTIVE OIL & GAS WELL
- ✱ ABANDONED OIL & GAS WELL
- NO RECORD

Somerset 1

- COUNTY LINES
- TOWNSHIP LINES
- BOROUGH LINES
- COAL CONTOURS
- CROP LINES—SEAM BEING MINED
- CROP LINES—SEAMS NOT BEING MINED

WPA. PROJECT N^o 19666

NF-7