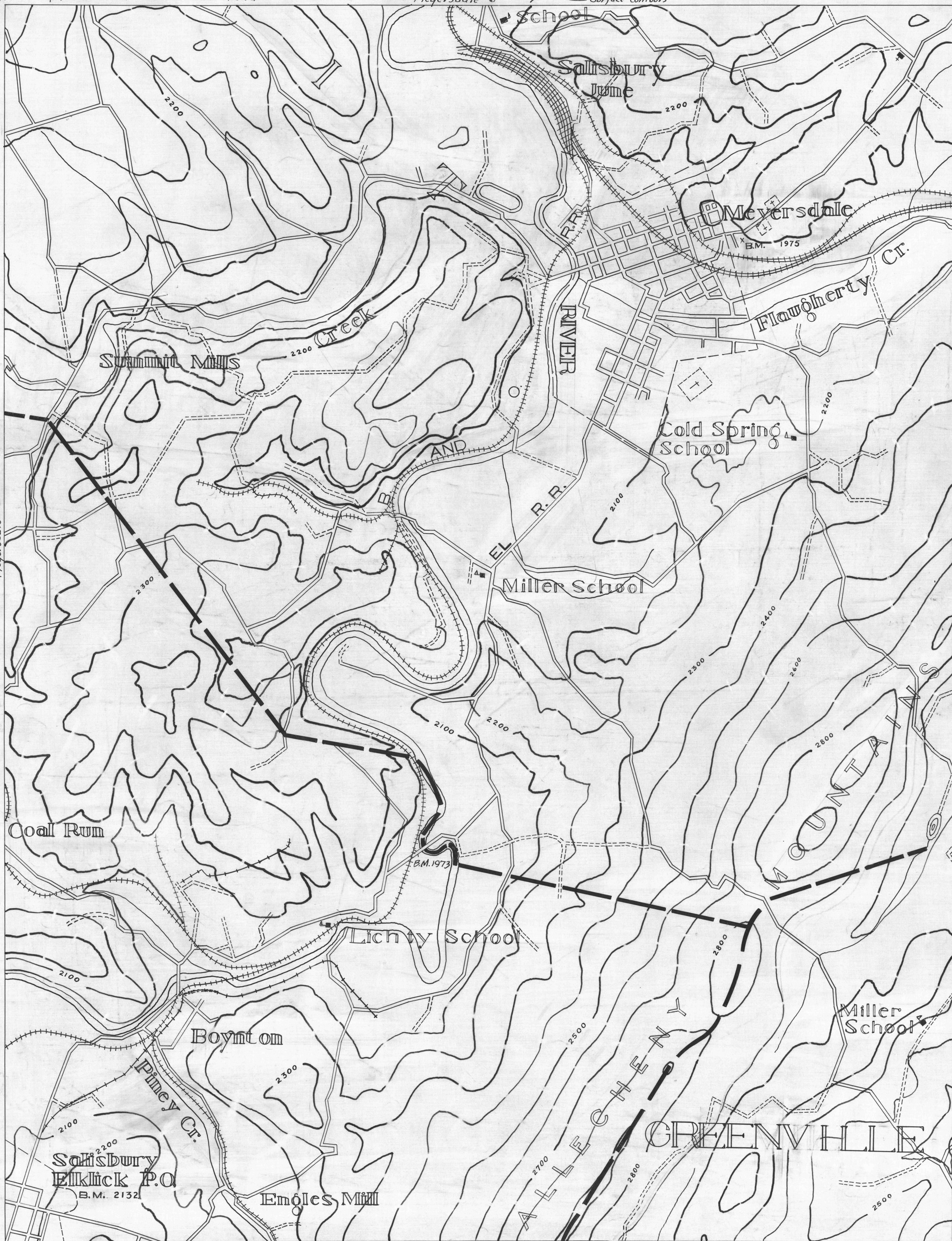


Meyersdale 5
 39° 50'
 79° 00'
 Berlin 4
 39° 50'

- Active Oil Well
- ◊ Abandoned Oil Well
- * Active Gas Well
- * Abandoned Gas Well
- * Active Oil & Gas Well
- * Abandoned Oil & Gas Well
- ◊ Dry Hole
- No Record
- ▬ County Lines
- ▬ Township Lines
- ▬ Borough Lines
- ▬ Surface Contours
- Coal Contours
- Crop Lines Seams Being Mined
- Crop Lines Seams Not Being Mined



Grantsville 2
 39° 45'
 79° 05'
 Grantsville 3
 2 MILES
 MEYERSDALE SHEET N°9
 W.P.A. PROJECT N° 25734
 79° 00'
 Frostburg 4
 39° 45'

- Drift Opening
- Slope Opening
- ▬ Shafts
- ▬ Barrier Pillar