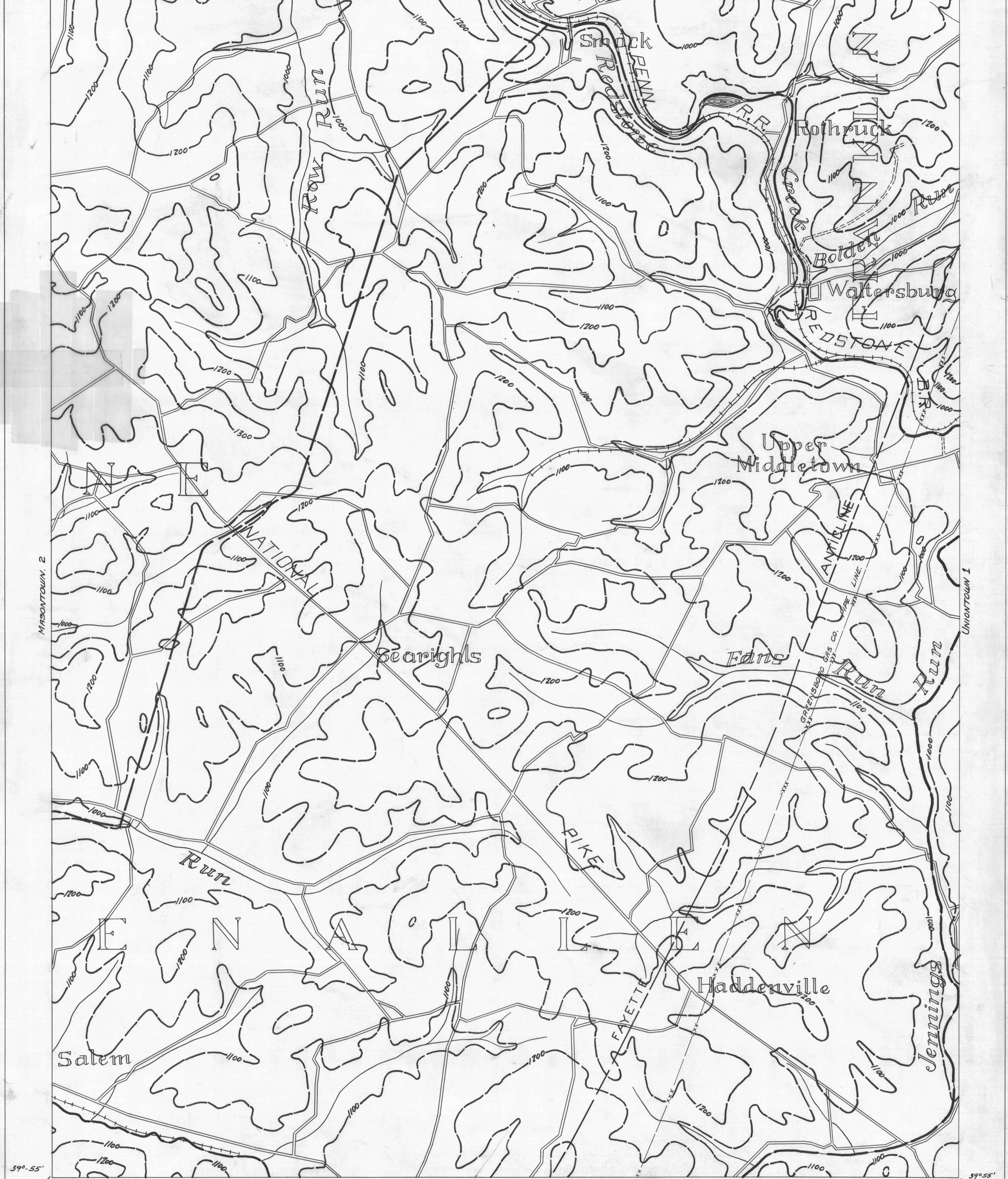


BROWNSVILLE 9 79° 50' 40° 00' 19° 45' 40° 00' CONNELLVILLE 7

- ACTIVE OIL WELL
- ABANDONED OIL WELL
- ★ ACTIVE GAS WELL
- ABANDONED GAS WELL
- ★ ACTIVE OIL & GAS WELL
- ABANDONED OIL & GAS WELL
- ◇ DRY HOLE
- NO RECORD

- COUNTY LINES
- TOWNSHIP LINES
- BOROUGH LINES
- SURFACE CONTOURS
- 900 COAL CONTOURS
- CROP LINES-SEAMS BEING MINED
- CROP LINES-SEAMS NOT BEING MINED



MASON TOWN 2 39° 55' 79° 50' MASON TOWN 6 2 MILES MASON TOWN-NO 3 39° 55' 79° 50' MASON TOWN 4

- Y DRAFT OPENING
- Z SLOPE OPENING
- SHAFTS
- ▨ BARRIER PILLAR

WPA PROJECT No 19666

Mason town 6 Mason town 3