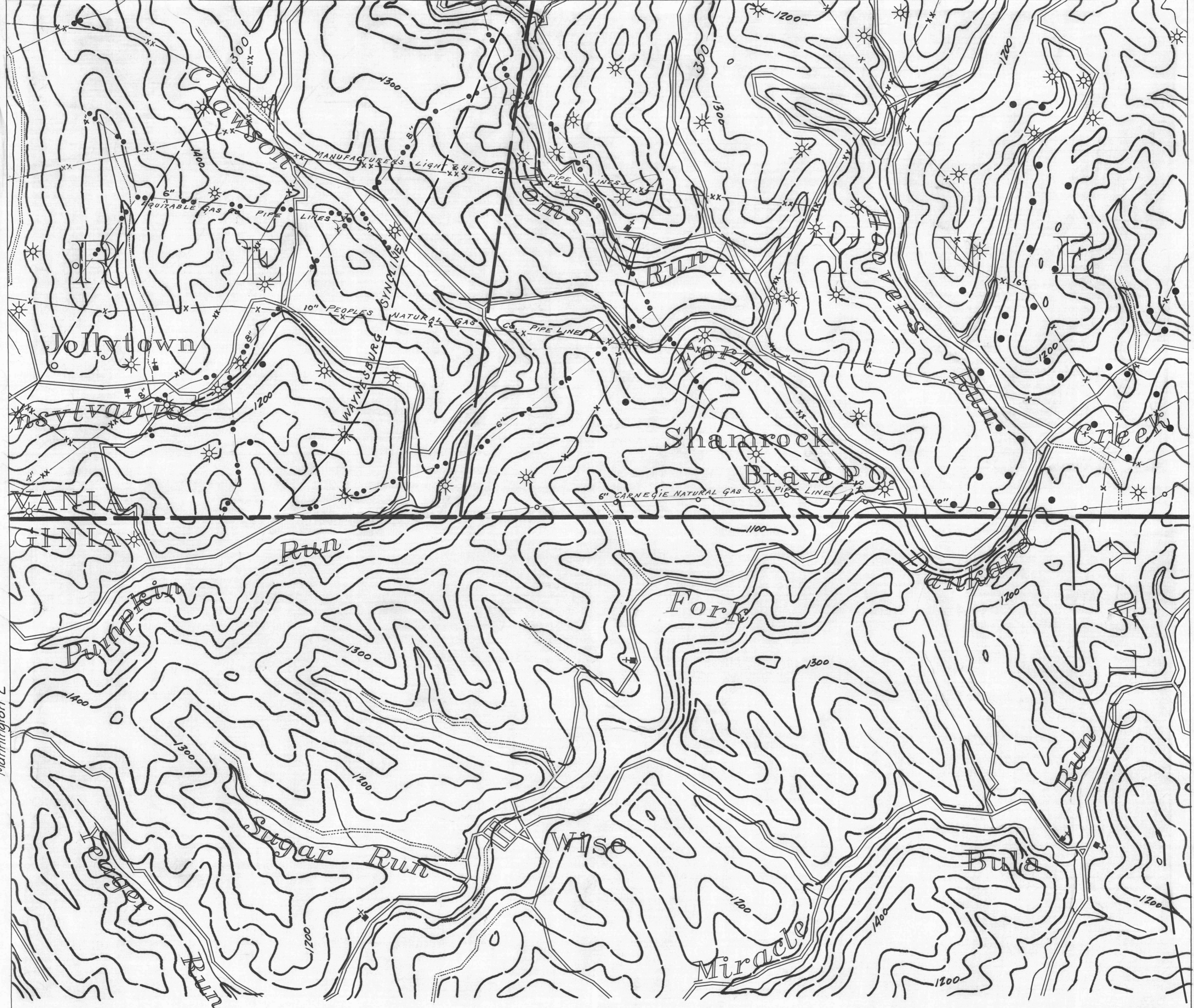


ROGERSVILLE 8 80° 20' 39° 45' ROGERSVILLE 9 80° 15' 39° 45' WAYNESBURG 7

- ACTIVE OIL WELL
- ◆ ABANDONED OIL WELL
- ⊙ ACTIVE GAS WELL
- ⊙ ABANDONED GAS WELL
- \* ACTIVE OIL & GAS WELL
- \* ABANDONED OIL & GAS WELL
- ◇ DRY HOLE
- NO RECORD

- COUNTY LINES
- TOWNSHIP LINES
- BOROUGH LINES
- SURFACE CONTOURS
- COAL CONTOURS
- CROP LINES - SEAM BEING MINED
- CROP LINES - SEAMS NOT BEING MINED

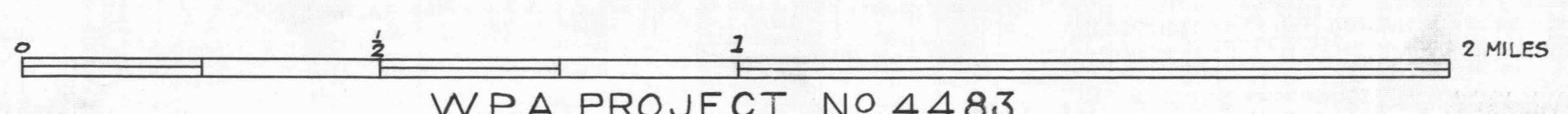


Mannington 2

Blacksville 1

39° 40' 80° 20' 39° 40' 80° 15' 39° 40'

- Y DRIFT OPENING
- SLOPE OPENING
- SHAFTS
- ▨ BARRIER PILLAR



W.P.A. PROJECT NO 4483

MANNINGTON SHEET NO 3  
PITTSBURGH SEAM