

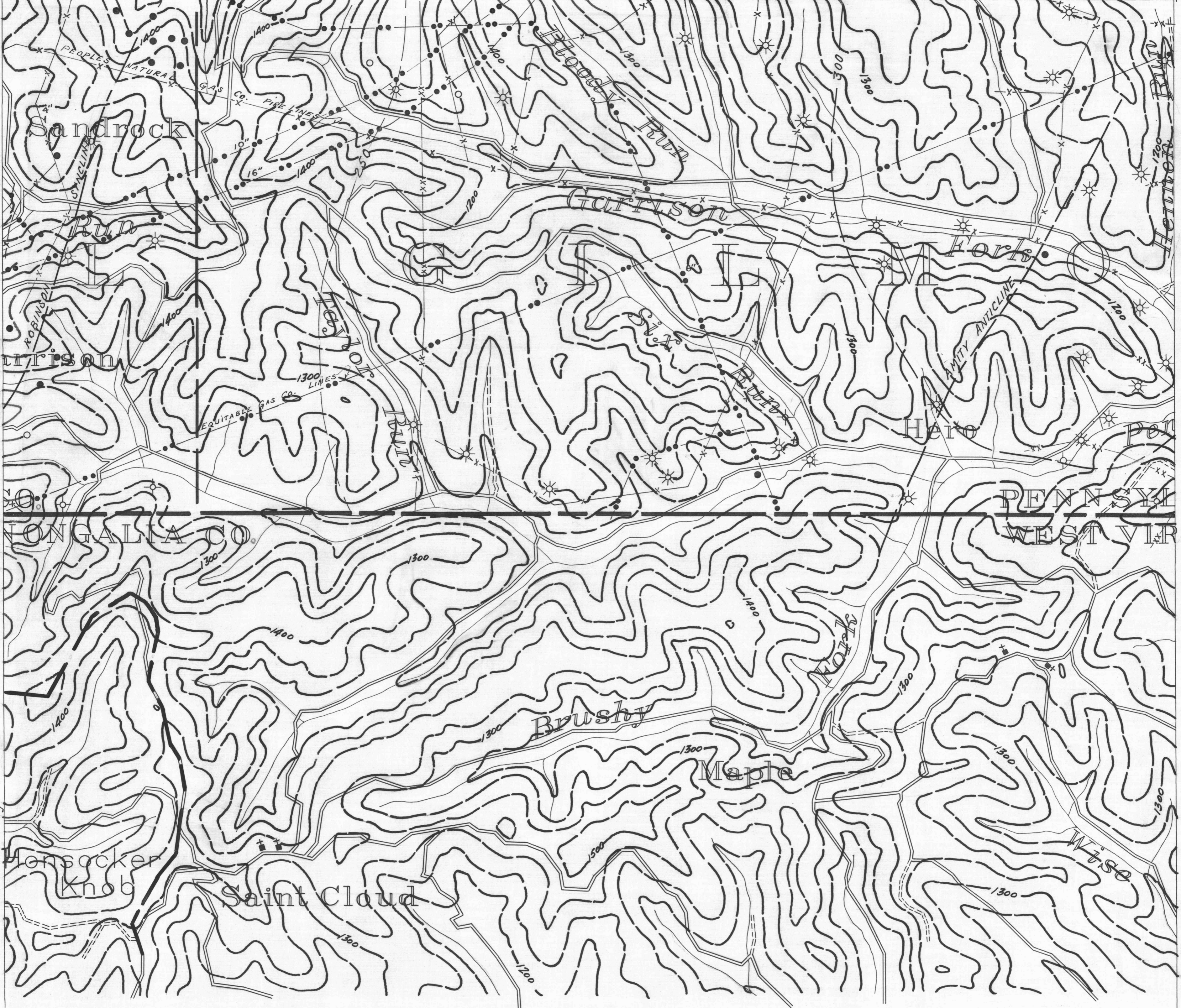
ROGERSVILLE 7 39°45' 80°20' ROGERSVILLE 8 80°20' ROGERSVILLE 9

- ACTIVE OIL WELL
- ◐ ABANDONED OIL WELL
- ★ ACTIVE GAS WELL
- ◑ ABANDONED GAS WELL
- ✱ ACTIVE OIL & GAS WELL
- ✱ ABANDONED OIL & GAS WELL
- ✱ DRY HOLE
- NO RECORD

- COUNTY LINES
- TOWNSHIP LINES
- BOROUGH LINES
- SURFACE CONTOURS

- COAL CONTOURS
- CROP LINES - SEAM BEING MINED
- CROP LINES - SEAMS NOT BEING MINED

Rogersville 8



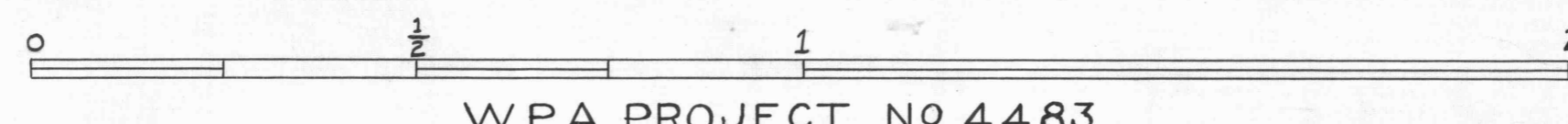
Mannington 1

Mannington 3

39°40' 80°25'

39°40' 80°20'

- Y DRIFT OPENING
- Z SLOPE OPENING
- SHAFTS
- ▨ BARRIER PILLAR



W.P.A. PROJECT NO 4483

MANNINGTON SHEET NO 2
PITTSBURGH SEAM