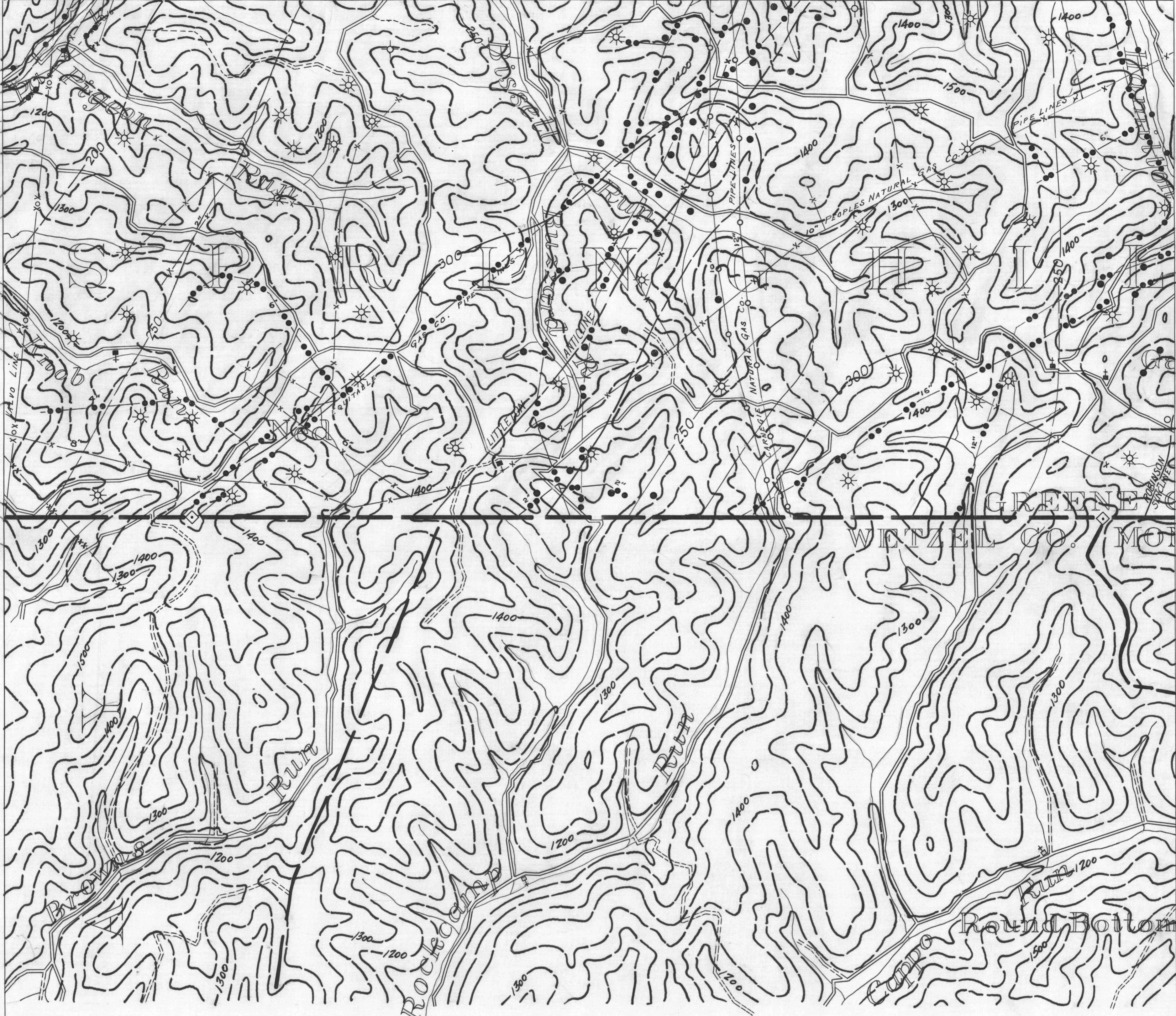


- ACTIVE OIL WELL
- ABANDONED OIL WELL
- ⊛ ACTIVE GAS WELL
- ⊛ ABANDONED GAS WELL
- ⊛ ACTIVE OIL & GAS WELL
- ⊛ ABANDONED OIL & GAS WELL
- DRY HOLE
- NO RECORD

- COUNTY LINES
- TOWNSHIP LINES
- BOROUGH LINES
- SURFACE CONTOURS
- COAL CONTOURS
- CROP LINES - SEAM BEING MINED
- CROP LINES - SEAMS NOT BEING MINED

Rogersville 7



ROGERSVILLE 6
39°45'

ROGERSVILLE 8
39°45'

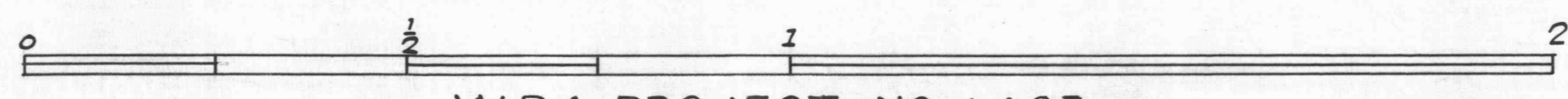
Littleton 3

Mannington 2

39°40'
80°30'

39°40'
80°25'

- DRIFT OPENING
- SLOPE OPENING
- SHAFTS
- ▨ BARRIER PILLAR



W.P.A. PROJECT NO 4483

MANNINGTON SHEET NO 1
PITTSBURGH SEAM