

Butler 6
79°45'
40°50'

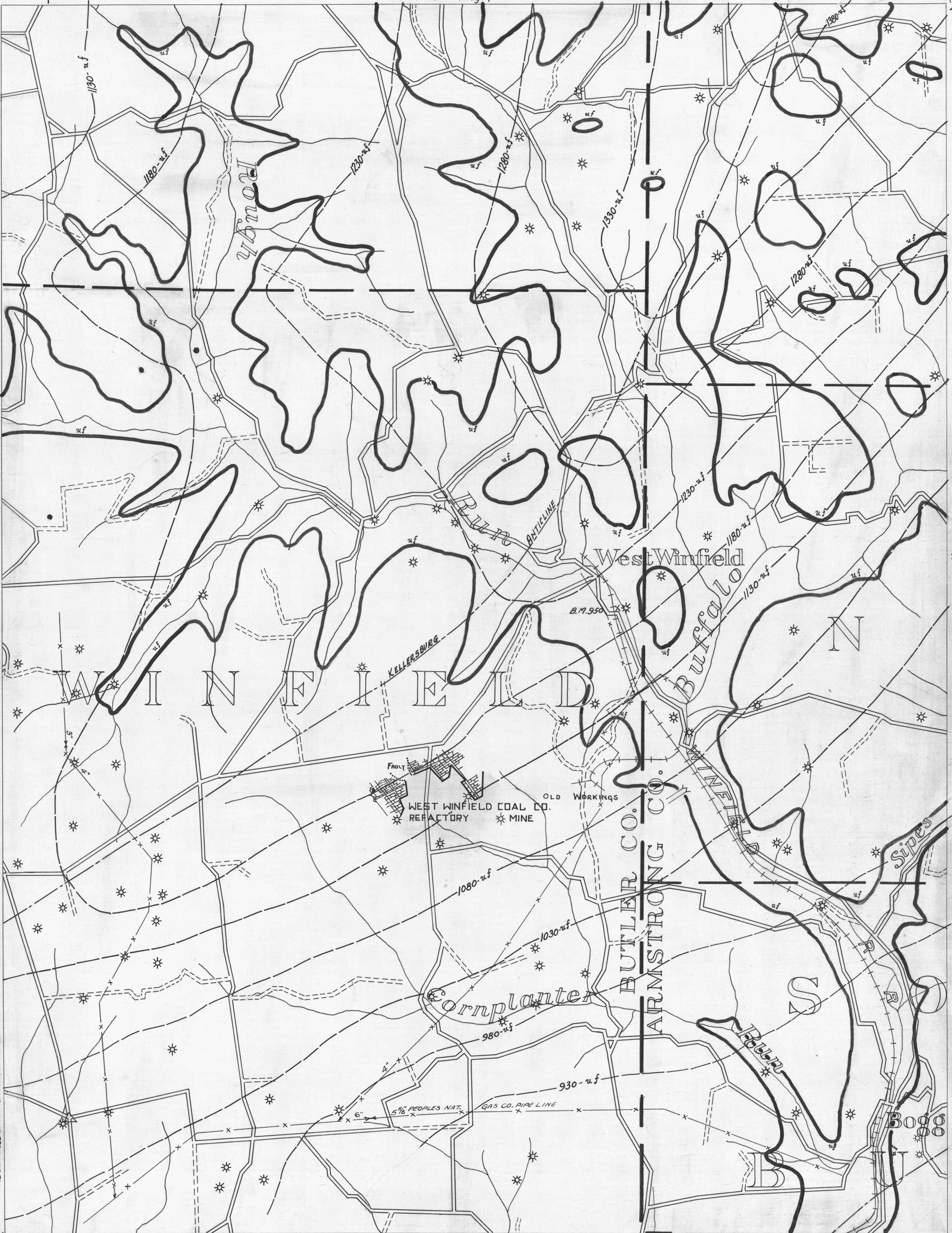
- ACTIVE OIL WELL
- ABANDONED OIL WELL
- ★ ACTIVE GAS WELL
- ★ ABANDONED GAS WELL
- ★ ACTIVE OIL & GAS WELL
- ★ ABANDONED OIL & GAS WELL
- ◇ DRY HOLE
- NO RECORD

- COUNTY LINES
- TOWNSHIP LINES
- BOROUGH LINES

- 000 UF COAL CONTOURS
- CROP LINES - SEAM BEING MINED
- CROP LINES - SEAMS NOT BEING MINED

79°40'
40°50'
Kittanning 7

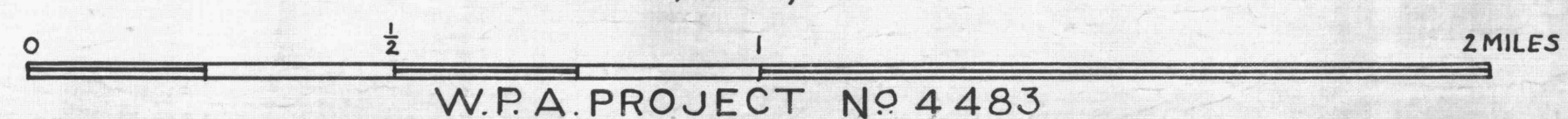
Kittanning 4



NOTE:
CONTOURS MARKED (uf) ARE FOR
UPPER FREEPORT SEAM AND ARE DERIVED BY
ADDING 230 FT. TO VANPOET LIMESTONE ELEVATIONS

New Kensington
79°45'
40°45'

- DRIFT OPENING
- SLOPE OPENING
- SHAFTS
- BARRIER PILLAR



W.P.A. PROJECT No 4483

KITTANNING SHEET No. 7.
Upper Freeport Seam - uf

79°40'
40°45'
Freepoint 2