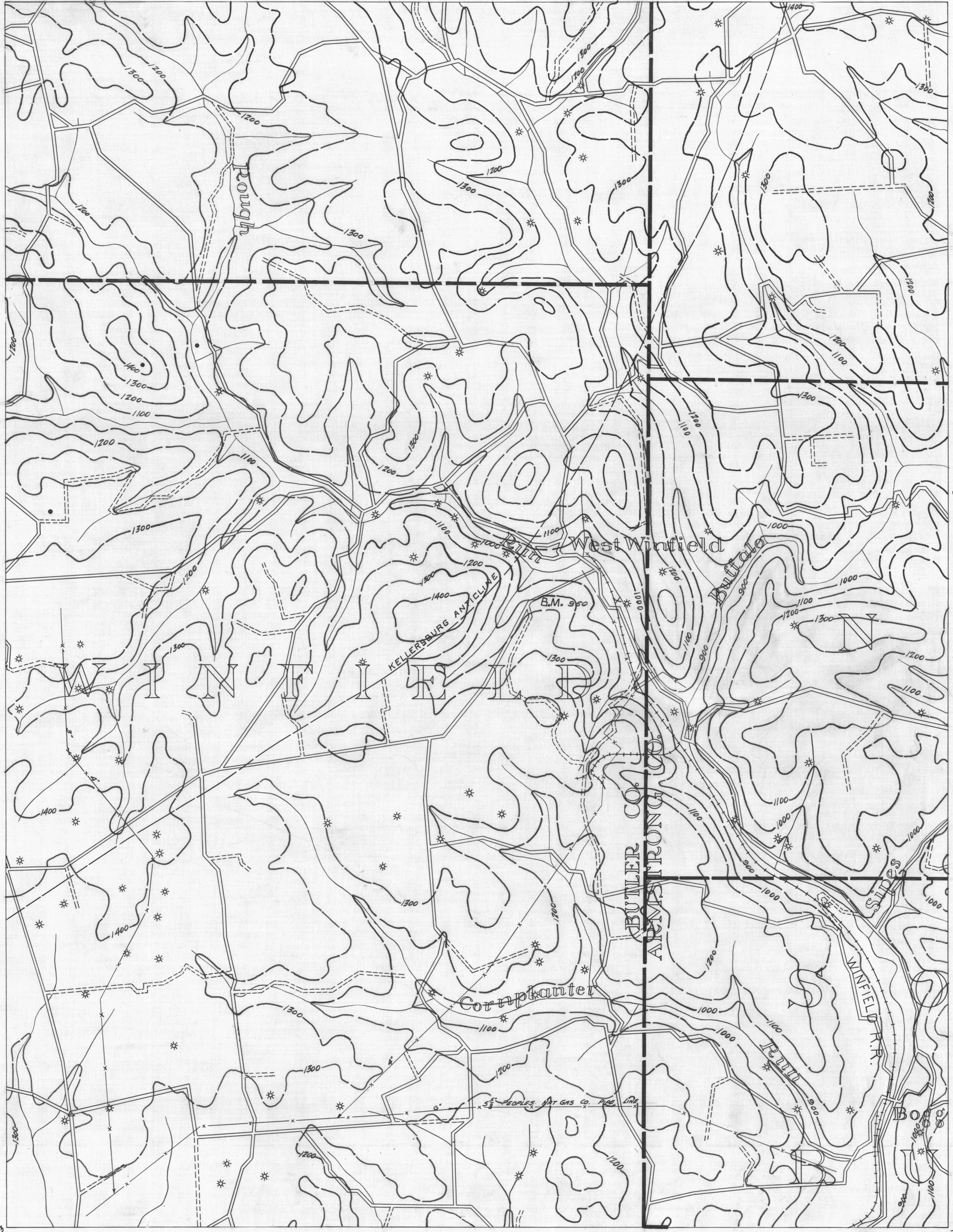


BUTLER 6 7945 40°50' KITTANNING 4

- ACTIVE OIL WELL
- ABANDONED OIL WELL
- * ACTIVE GAS WELL
- ABANDONED GAS WELL
- * ACTIVE OIL & GAS
- * ABANDONED OIL & GAS WELL
- ◇ DRY HOLE
- NO RECORD

- COUNTY LINES
- TOWNSHIP LINES
- BOROUGH LINES
- SURFACE CONTOURS
- COAL CONTOURS
- CROP LINES - SEAMS BEING MINED
- CORP LINES - SEAMS NOT BEING MINED

KITTANNING 5 7940 40°50'

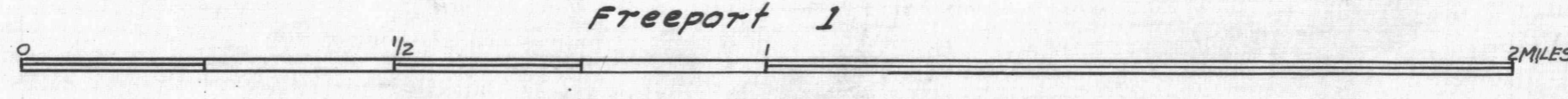


Butler 9

KITTANNING 8

40°45' NEW HENNINGTON 3 7945

- DRIFT OPENING
- SLOPE OPENING
- SHAFTS
- BARRIER PILLAR



W.P.A. PROJECT NO 19666

KITTANNING SHEET NO 7

40°45' FREEPORT 2 7940