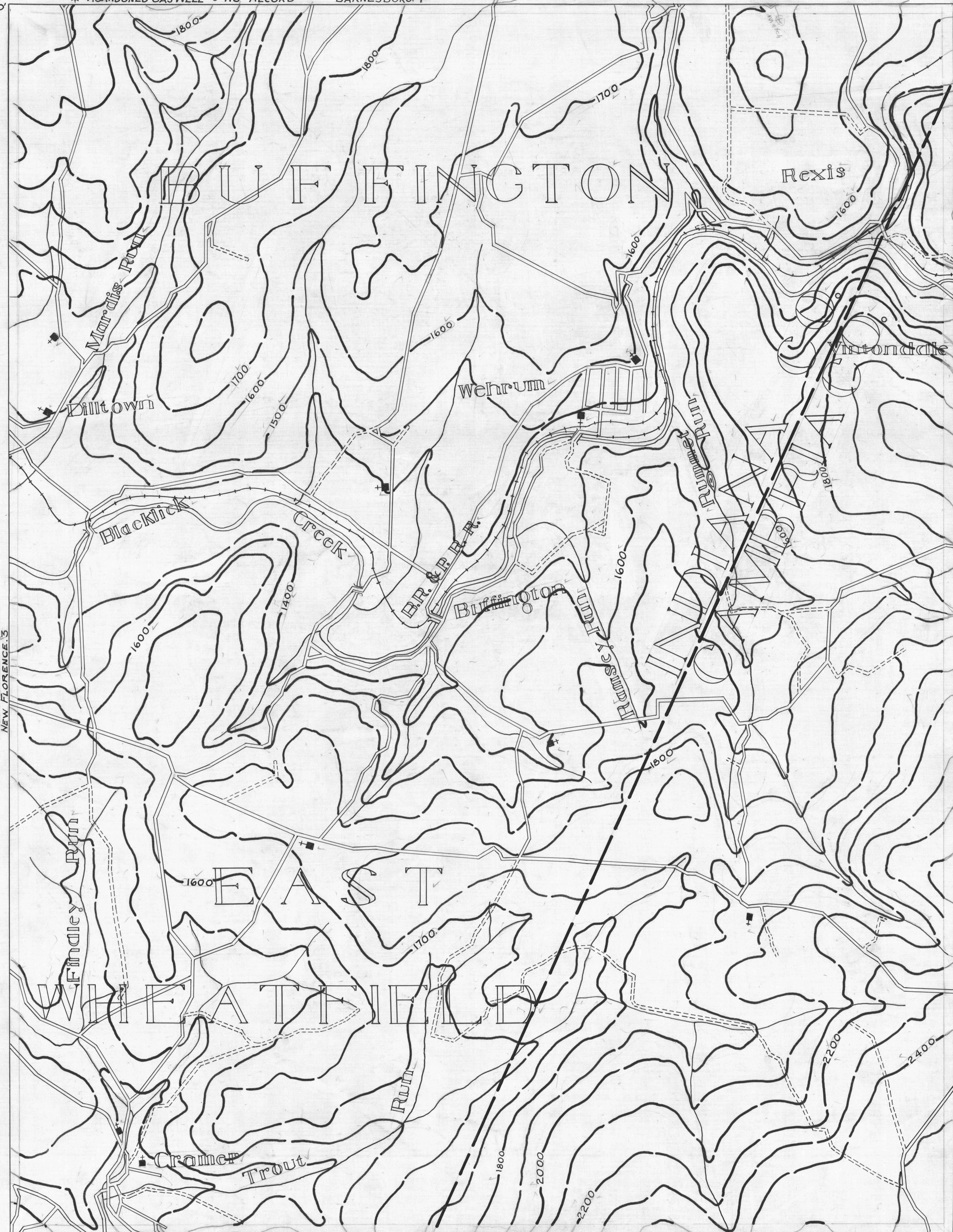


INDIANA-9 79°00' 40°30' 188°55' BUFFINGTON

● ACTIVE OIL WELL ✱ ACTIVE OIL & GAS WELL ——— COUNTY LINES. — 980 — COAL CONTOURS
 ◐ ABANDONED OIL WELL ✱ ABANDONED OIL & GAS WELL ——— TOWNSHIP LINES. ——— CROP LINES- SEAM BEING MINED.
 ✱ ACTIVE GAS WELL ◐ DRY HOLE ——— BOROUGHLINES. - - - CROP LINES-SEAM NOT BEING MINED
 ✱ ABANDONED GAS WELL ◐ NO RECORD BARNESBORO. 7



NEW FLORENCE 3 79°00' 40°25' JOHNSTOWN-4 JOHNSTOWN NO.1 78°55' JOHNSTOWN 5

Y — DRIFT OPENING
 Z — SLOPE OPENING
 ■ — SHAFTS
 ▣ — BARRIER PILLAR

2 MILES. W.P.A. PROJECT No 25734.