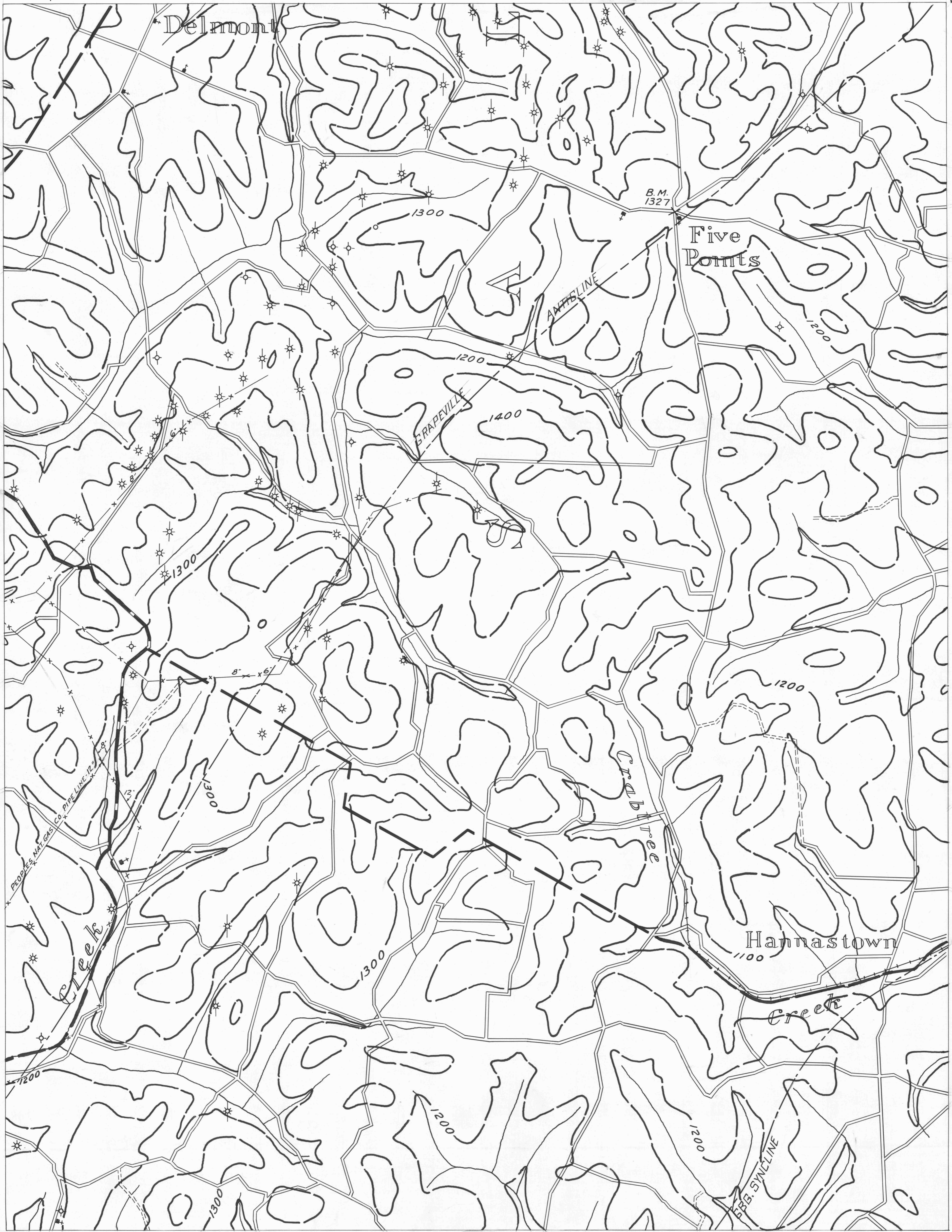


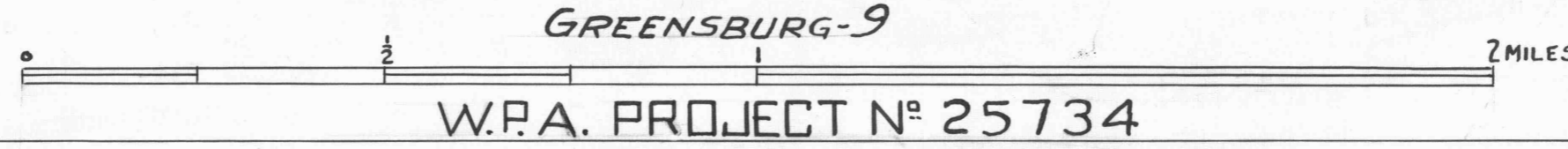
GREENSBURG-2 79°35' 40°25' GREENSBURG-3 79°30' 40°25' LATROBE-1

- ACTIVE OIL WELL
- ABANDONED OIL WELL
- ★ ACTIVE GAS WELL
- ABANDONED GAS WELL
- ★ ACTIVE OIL & GAS WELL
- ★ ABANDONED OIL & GAS WELL
- ◇ DRY HOLE
- NO RECORD
- COUNTY LINES
- TOWNSHIP LINES
- BOROUGH LINES
- SURFACE CONTOURS
- COAL CONTOURS
- CROP LINES - SEAM BEING MINED
- CROP LINES - SEAMS NOT BEING MINED



GREENSBURG-5 79°35' 40°20' GREENSBURG-6 79°35' 40°20' GREENSBURG-9 79°30' 40°20' LATROBE-4 LATROBE-7

- DRIFT OPENING
- SLOPE OPENING
- SHAFTS
- ▨ BARRIER PILLAR



GREENSBURG SHEET N°6