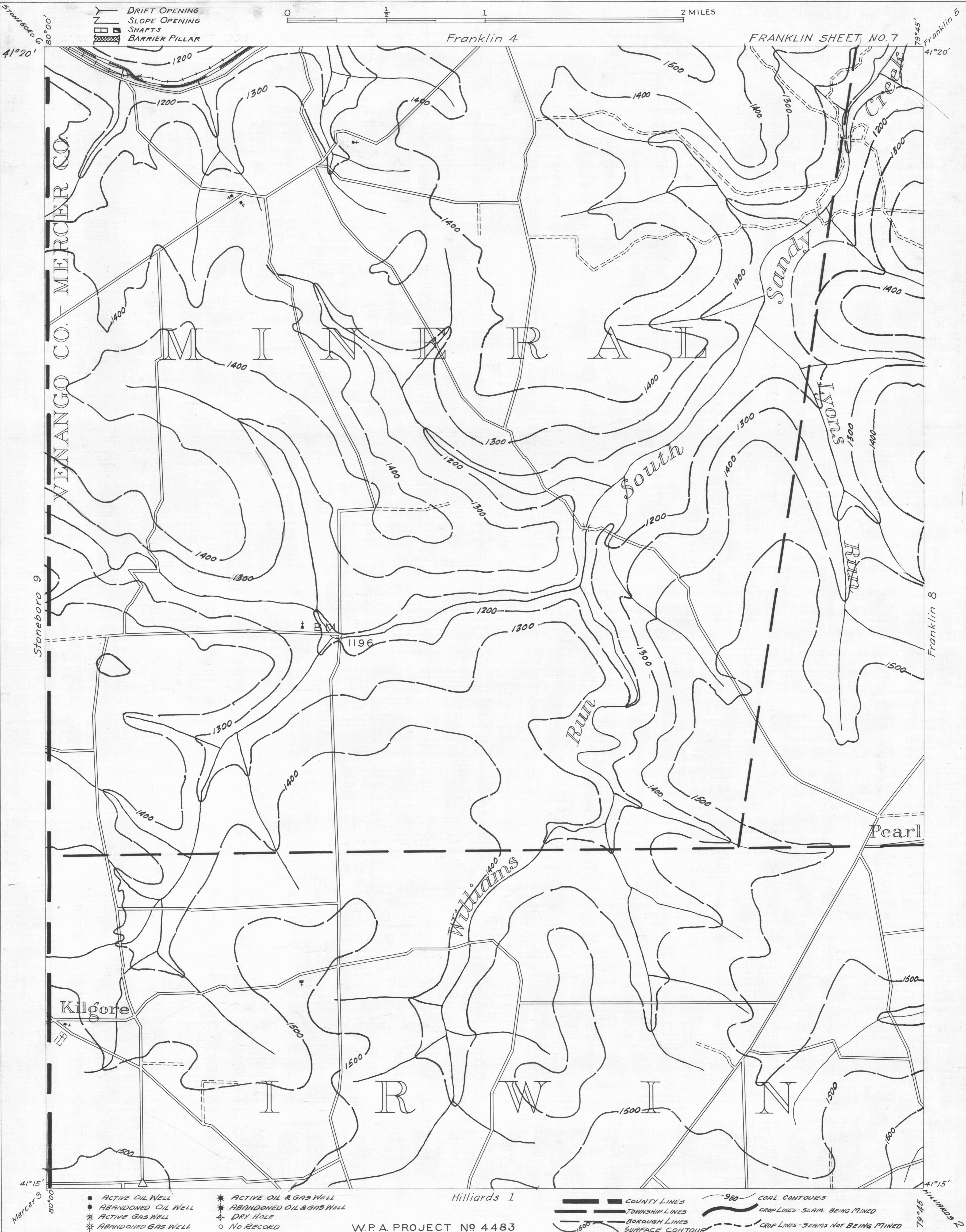


Matched 3/22/34 Newman



DRIFT OPENING
SLOPE OPENING
SHAFTS
BARRIER PILLAR

0 1/2 1 2 MILES

FRANKLIN SHEET NO. 7

Franklin 4

79°45'
Franklin 5
41°20'

Stoneboro 9
80°00'
41°20'

VENANGO CO. - MERCER CO.

MINNERSVILLE

Sandy Creek

South Run

Williams Run

Pearl

Kilgore

Hilliards 1

Franklin 8

- ACTIVE OIL WELL
- ABANDONED OIL WELL
- * ACTIVE GAS WELL
- * ABANDONED GAS WELL
- * ACTIVE OIL & GAS WELL
- * ABANDONED OIL & GAS WELL
- ◇ DRY HOLE
- NO RECORD

W.P.A. PROJECT NO 4483

- COUNTY LINES
- TOWNSHIP LINES
- BOROUGH LINES
- SURFACE CONTOUR

- 980 COAL CONTOURS
- CROP LINES - SEAM BEING MINED
- - - CROP LINES - SEAMS NOT BEING MINED

LINED BY S.J. NEULIK 3-14-34
LETTERED BY NEWMAN 3-14-34
" BAIRD 3-19-34
CHECKED BY REED 3-19-34

FRANKLIN SHEET 7
FR-7

Matched 3/22/34 Newman

matched n.v. 2/15/24