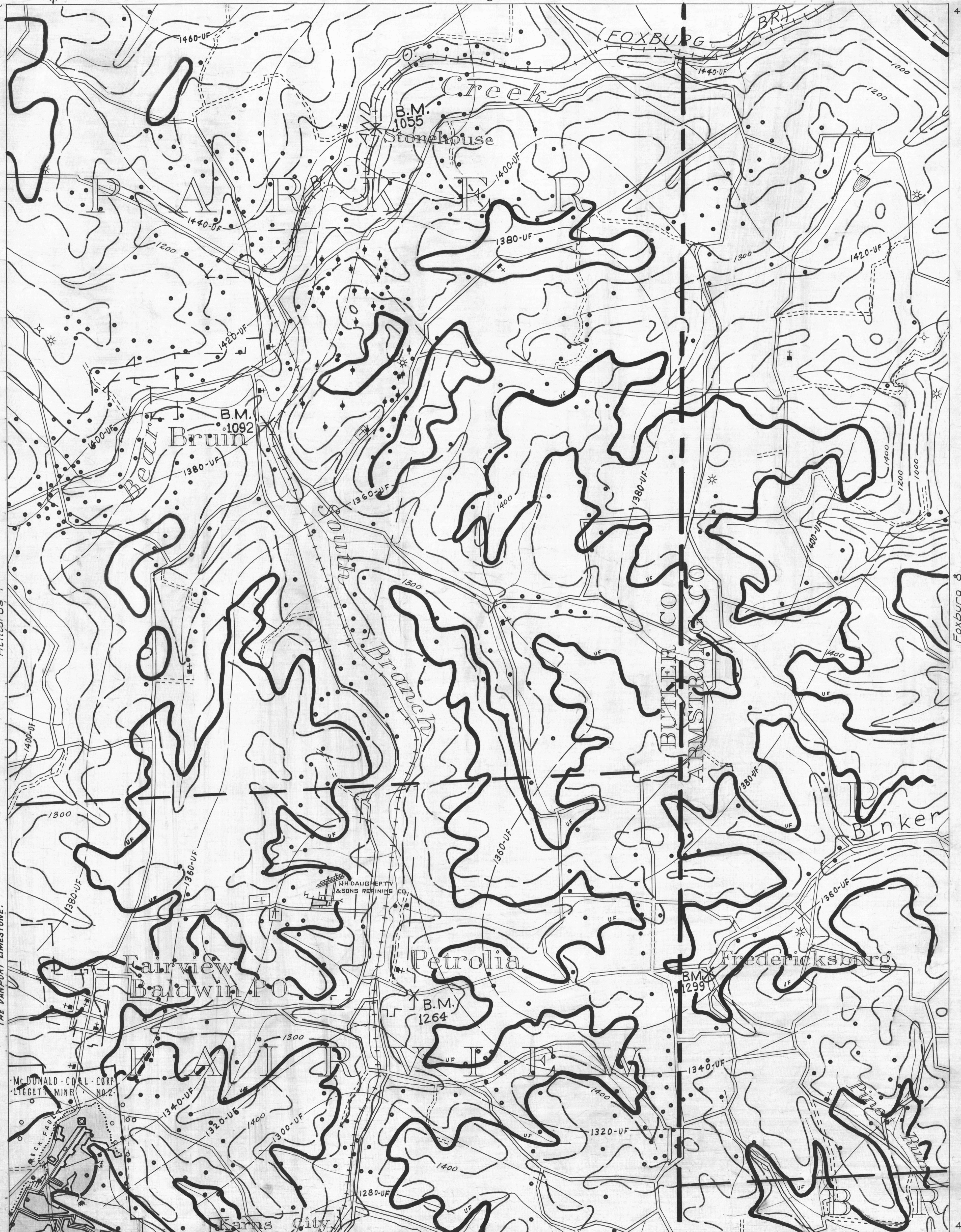


Hilliards 6 7925 41° 05' Foxburg 4 Upper Freeport Hilliards 5 7920 41° 05' Foxburg 5

- ACTIVE OIL WELL
- ABANDONED OIL WELL
- ★ ACTIVE GAS WELL
- ABANDONED GAS WELL
- NO RECORD
- ★ ACTIVE OIL & GAS WELL
- ABANDONED OIL & GAS WELL
- DRY HOLE
- NO RECORD

- COUNTY LINES
- TOWNSHIP LINES
- BOROUGH LINES
- SURFACE CONTOURS
- COAL CONTOURS
- CROP LINE - SEAM BEING MINED
- CROP LINES - SEAMS NOT BEING MINED



NOTE: CONTOURS MARKED "UF" ARE FOR UPPER FREEPORT COAL SEAM AND DERIVED BY ADDING 240 FEET TO THE VANPORT LIMESTONE.

- DRIFT OPENING
- SLOPE OPENING
- SHAFTS
- ▣ BARRIER PILLAR

W.P.A. PROJECT NO 4483 2 MILES

FOXBURG SHEET No. 7. (D)-U. F. SEAM.

Traced By C.N. Carten Feb 20, 1934.

Butler 3 7925 41° 00' Kittanning 1 7920 41° 00' Kittanning 2