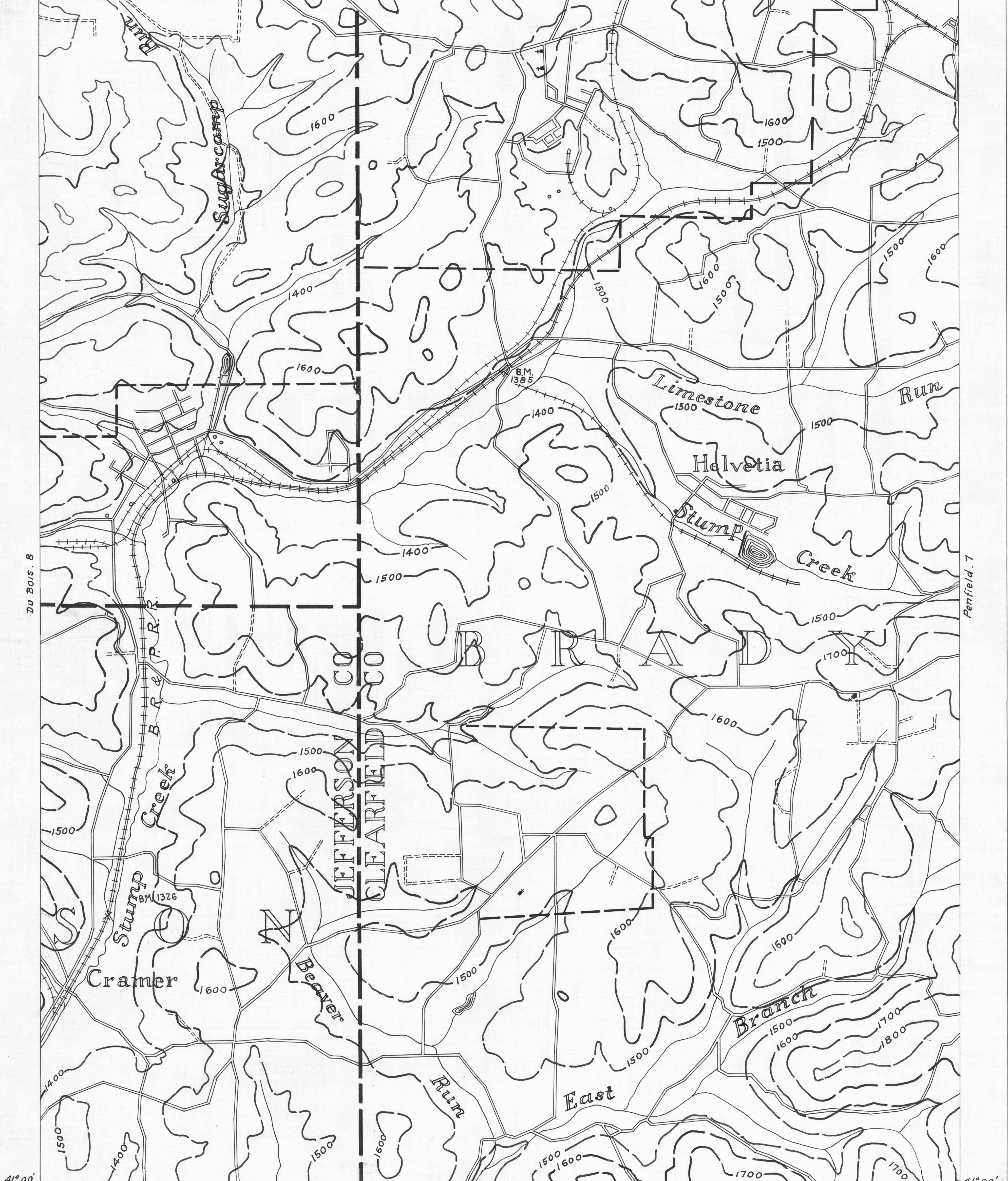


41° 05' 78° 50' **ACTIVE OIL WELL.** **ACTIVE OIL & GAS WELL.** **COUNTY LINES.** **980** **COAL CONTOURS.**
ABANDONED OIL WELL. **ABANDONED OIL & GAS WELL.** **TOWNSHIP LINES.** **IF** **CROP LINE - SEAM BEING MINED.**
ACTIVE GAS WELL. **DRY HOLE.** **BOROUGH LINES.** **1800** **CROP LINE - SEAM NOT BEING MINED.**
ABANDONED GAS WELL. **NO RECORD.**

Du Bois - 6



41° 00' 78° 50' **DRIFT OPENING.** **PUNXSUTAWNEY. 3** **2 MILES DU BOIS SHEET No 9.**
SLOPE OPENING. **Penfield. 7**
SHAFTS. **Curwensville. 1**
BARRIER PILLAR.

W.P.A. PROJECT No 19666.