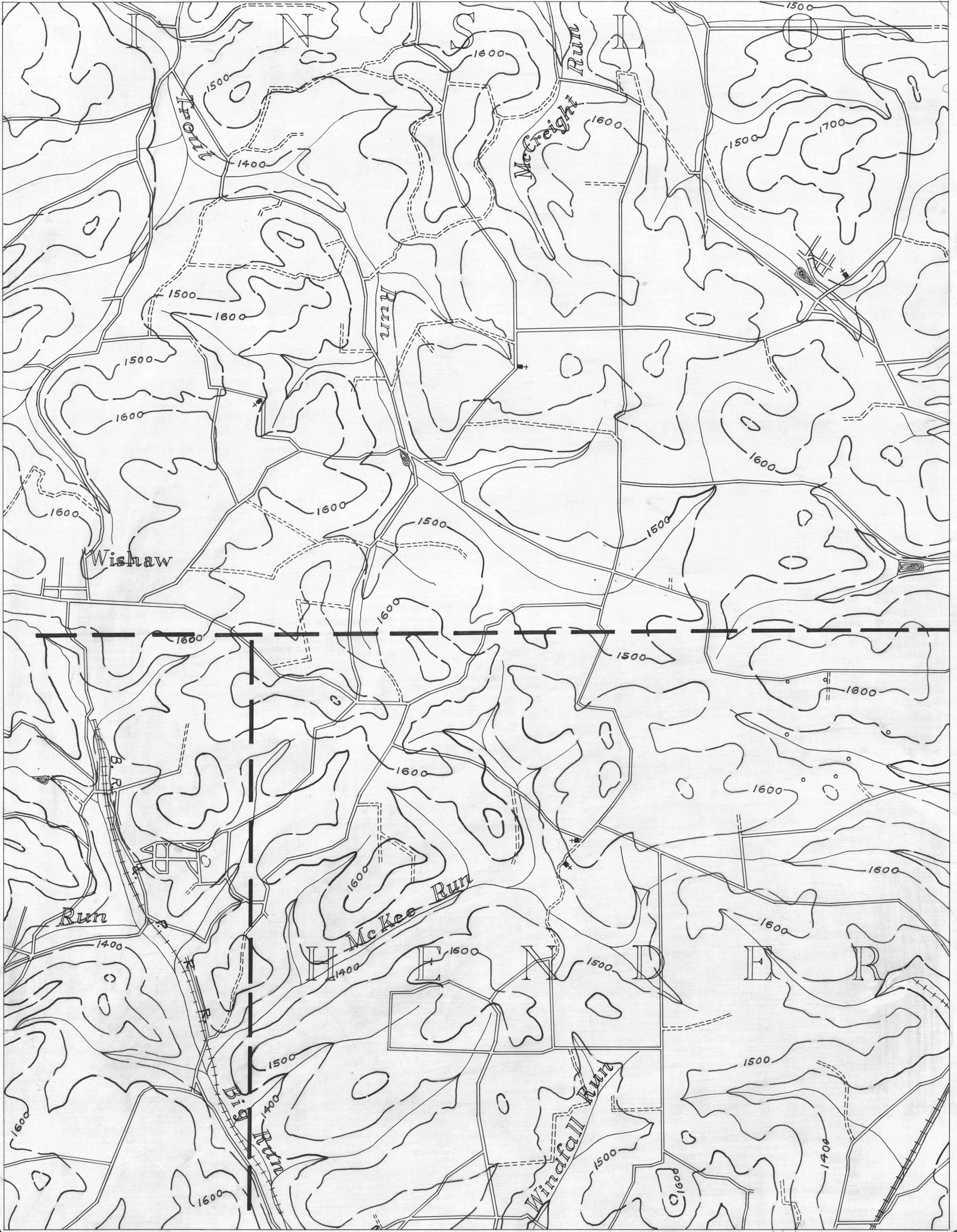


● ACTIVE OIL WELL. * ACTIVE OIL & GAS WELL. COUNTY LINES. 000 34 COAL CONTOURS. 78° 50' DU BOIS 6
 ○ ABANDONED OIL WELL. * ABANDONED OIL & GAS WELL. TOWNSHIP LINES. CROP LINES. SEAMS BEING MINED. 41° 05'
 ✱ ACTIVE GAS WELL. ○ DRY HOLE. BOROUGHS LINES. CROP LINES. SEAMS NOT BEING MINED. 1700 SURFACE CONTOURS.

Du Bois-5



— DRIFT OPENING
 — SLOPE OPENING
 □ SHAFT
 ▨ BARRIER PILLAR

PUNXSUTAWNEY 2

2 MILES

DU BOIS SHEET No 8.

W.P.A. PROJECT No 19666.

41° 00' PUNXSUTAWNEY 1 78° 55' 41° 00' PUNXSUTAWNEY 3