

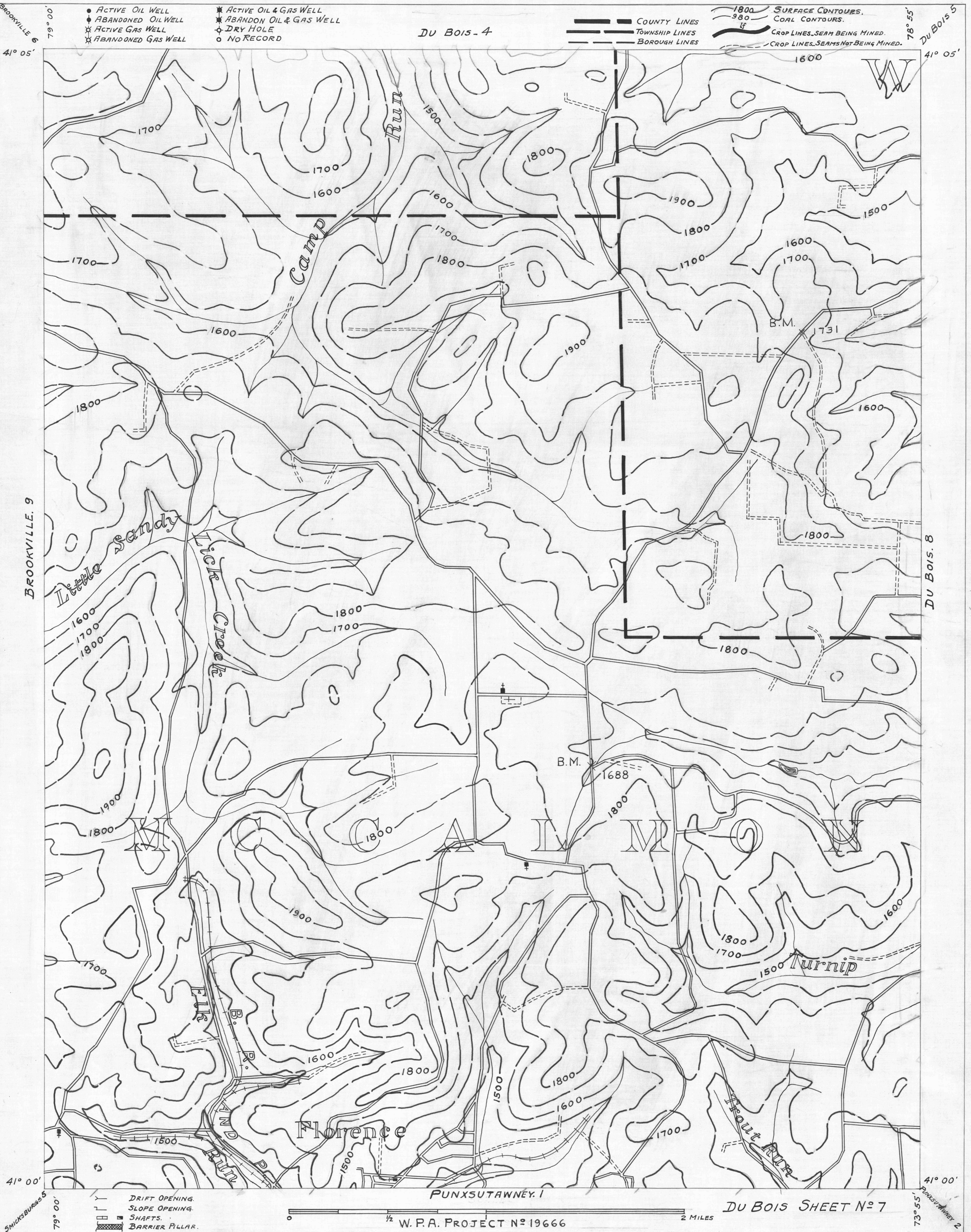
Du Bois - 4

- ACTIVE OIL WELL
- ◐ ABANDONED OIL WELL
- ✕ ACTIVE GAS WELL
- ✕ ABANDONED GAS WELL

- ✕ ACTIVE OIL & GAS WELL
- ✕ ABANDON OIL & GAS WELL
- DRY HOLE
- NO RECORD

- COUNTY LINES
- - - TOWNSHIP LINES
- - - BOROUGH LINES

- 1800 SURFACE CONTOURS.
- 980 COAL CONTOURS.
- if CROP LINES, SEAM BEING MINED.
- - - CROP LINES, SEAMS NOT BEING MINED.



BROOKVILLE. 9

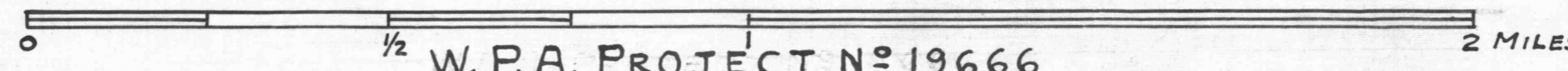
Du Bois. 8

PUNXSUTAWNEY. 1

DU BOIS SHEET N° 7

W. P. A. PROJECT N° 19666

- - - DRIFT OPENING.
- - - SLOPE OPENING.
- SHAFTS.
- BARRIER PILLAR.



5 MICKSBURG 5

PUNXSUTAWNEY 2