

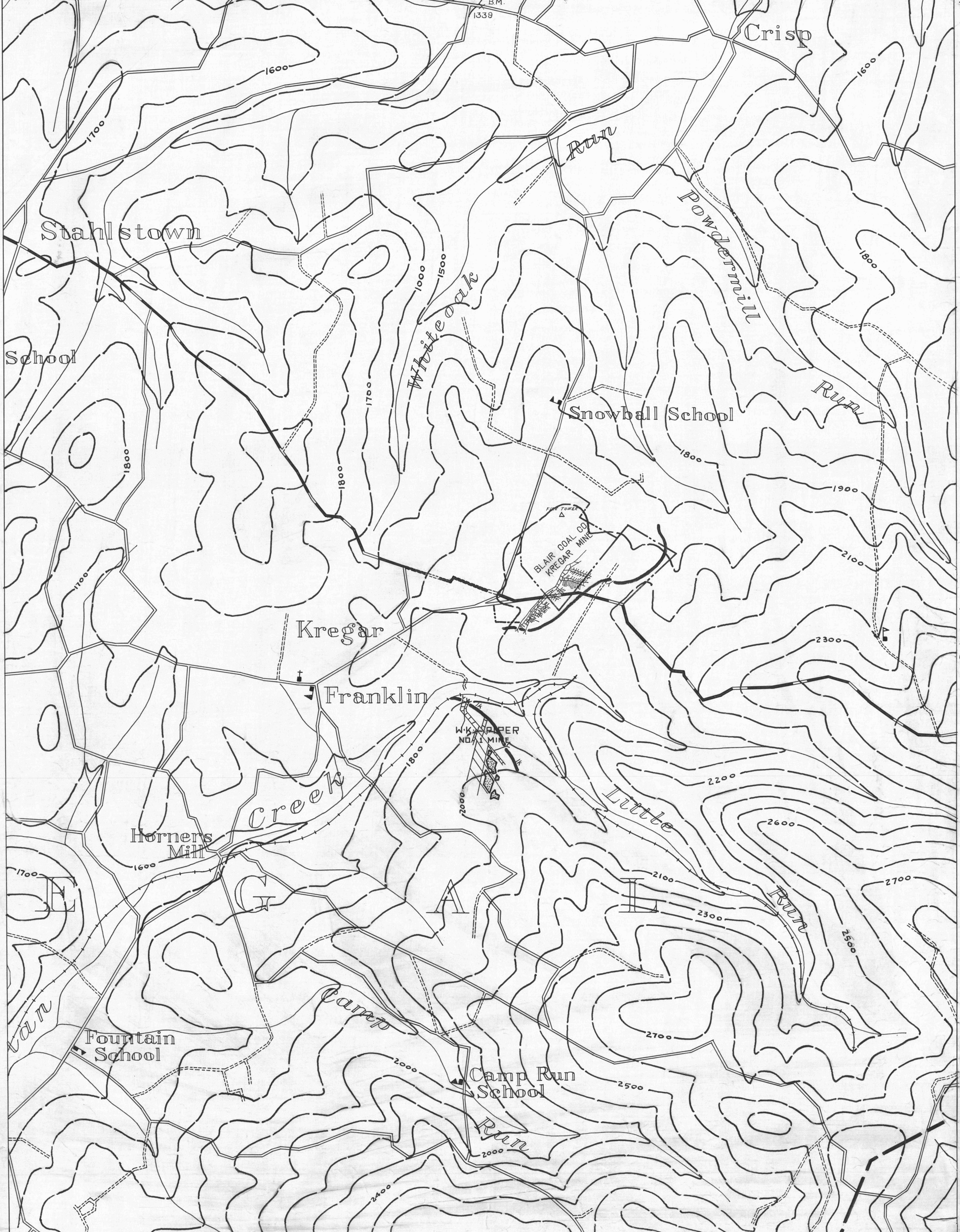
Donegal 2  
40°10'

- ACTIVE OIL WELL
- ABANDONED OIL WELL
- ★ ACTIVE GAS WELL
- ★ ABANDONED GAS WELL
- ★ ACTIVE OIL & GAS WELL
- ★ ABANDONED OIL & GAS WELL
- ◇ DRY HOLE
- NO RECORD

Donegal 3

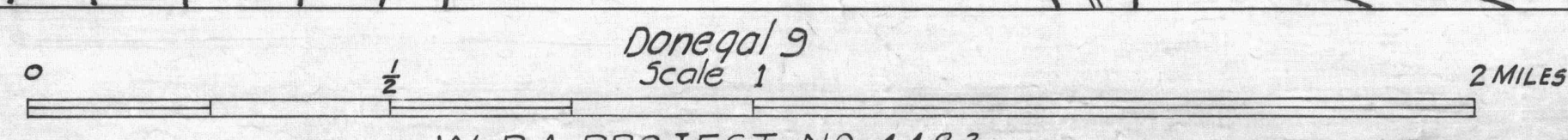
- COUNTY LINES
- TOWNSHIP LINES
- BOROUGH LINES
- SURFACE CONTOURS
- COAL CONTOURS
- CROP LINES-SEAM BEING MINED
- CROP LINES-SEAMS NOT BEING MINED

79°15'  
Somerset 1  
40°10'



Donegal 8  
40°05'  
79°20'

- DRIFT OPENING
- SLOPE OPENING
- SHAFTS
- BARRIER PILLAR



Donegal 9  
Scale 1

W.P.A. PROJECT NO. 4483

LOWER KITTINGING SEAM  
Donegal Sheet No. 6

79°15'  
Somerset 7  
40°05'