

Donegal 1  
40°10'

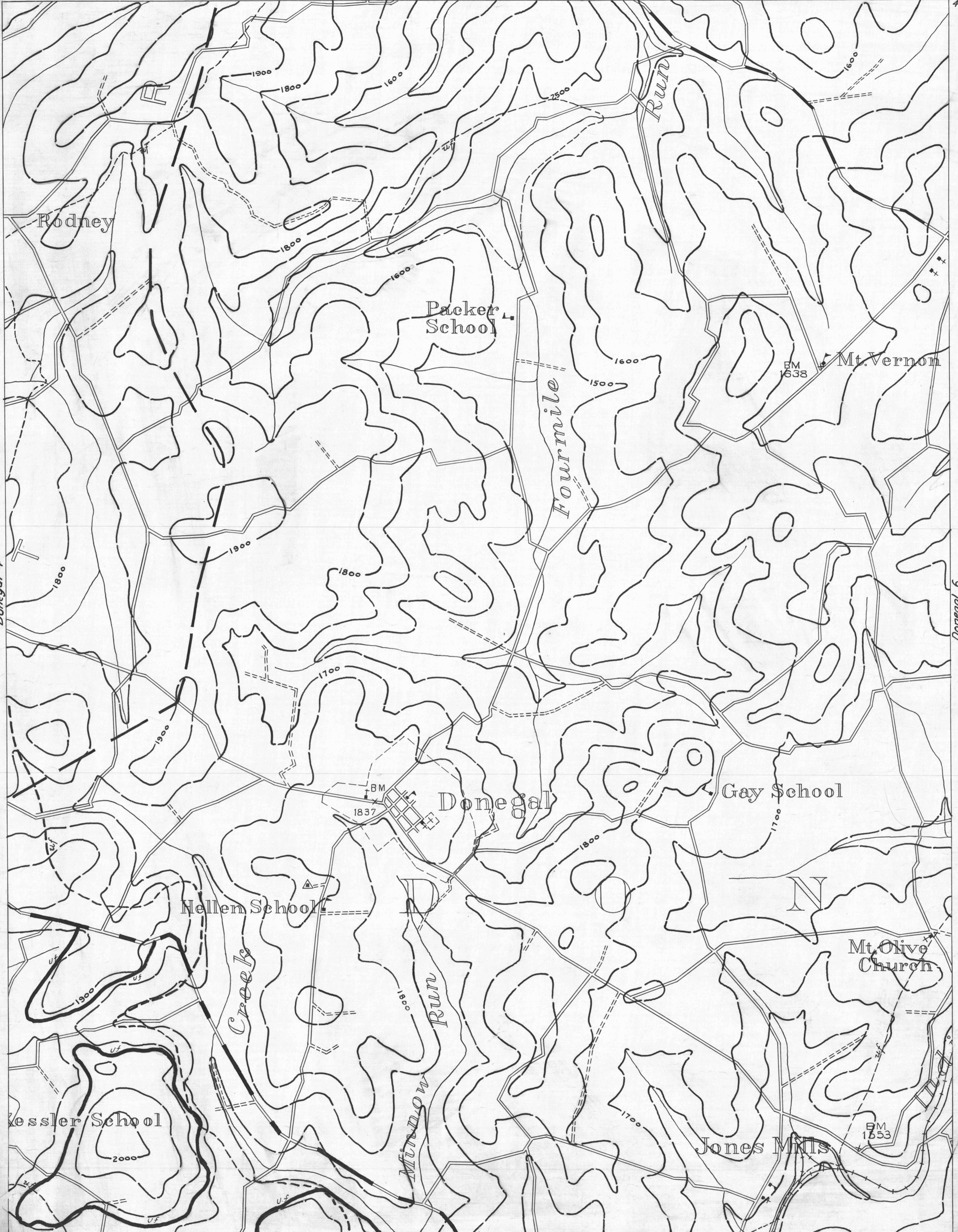
- ACTIVE OIL WELL
- ABANDONED OIL WELL
- ★ ACTIVE GAS WELL
- ★ ABANDONED GAS WELL

- ★ ACTIVE OIL & GAS WELL
- ★ ABANDONED OIL & GAS WELL
- ◇ DRY HOLE
- NO RECORD

- COUNTY LINES
- TOWNSHIP LINES
- BOROUGH LINES
- SURFACE CONTOURS

- COAL CONTOURS
- CROP LINES-SEAM BEING MINED
- CROP LINES-SEAMS NOT BEING MINED

Donegal 3  
79°20'



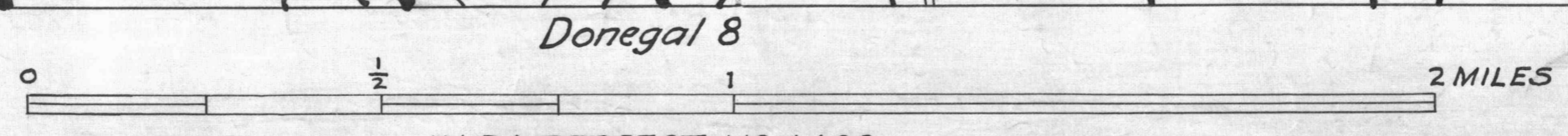
matched

matched

NOTE: OUT CROPS MARKED "uf" ARE TAKEN FROM THE SECOND GEOLOGICAL SURVEY.

Donegal 7  
40°05'

- DEIFT OPENING
- SLOPE OPENING
- SHAFTS
- BARRIER PILLAR



W.P.A. PROJECT NO. 4483

Upper Freeport Seam  
DONEGAL SHEET NO. 5

Donegal 9  
40°05'

matched