

Connellsville 5  
40° 10'

- ACTIVE OIL WELL
- ABANDONED OIL WELL
- ★ ACTIVE GAS WELL
- ABANDONED GAS WELL
- ★ ACTIVE OIL & GAS WELL
- ABANDONED OIL & GAS WELL
- ◇ DRY HOLE
- NO RECORD

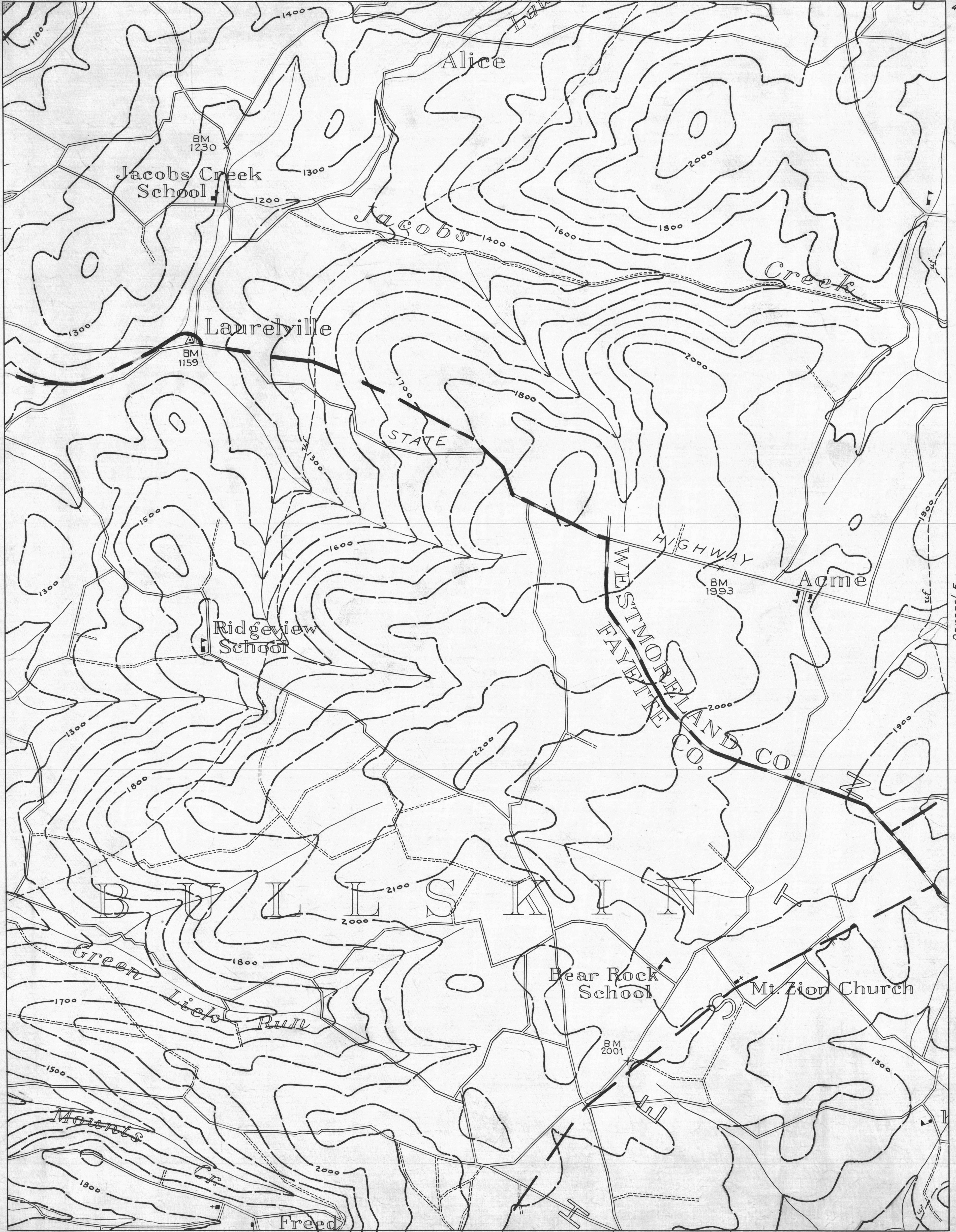
- ★ ACTIVE OIL & GAS WELL
- ABANDONED OIL & GAS WELL
- ◇ DRY HOLE
- NO RECORD

Donegal 1

- COUNTY LINES
- TOWNSHIP LINES
- BOROUGH LINES
- SURFACE CONTOURS

- 980 COAL CONTOURS
- CROP LINES-SEAM BEING MINED
- CROP LINES-SEAMS NOT BEING MINED

Donegal 2  
79° 25'  
40° 10'



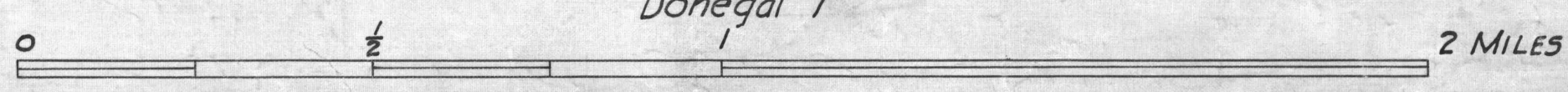
Connellsville 6

Donegal 5

NOTE: OUT CROSSES MARKED "X" ARE TAKEN FROM THE SECOND GEOLOGICAL SURVEY.

Connellsville 6  
40° 05'  
79° 30'

- DRIFT OPENING
- SLOPE OPENING
- SHAFTS
- ▨ BARRIER PILLAR



W.P.A. PROJECT NO. 4483

Pittsburgh Seam  
Donegal Sheet No. 4

Donegal 8  
79° 25'  
40° 05'