

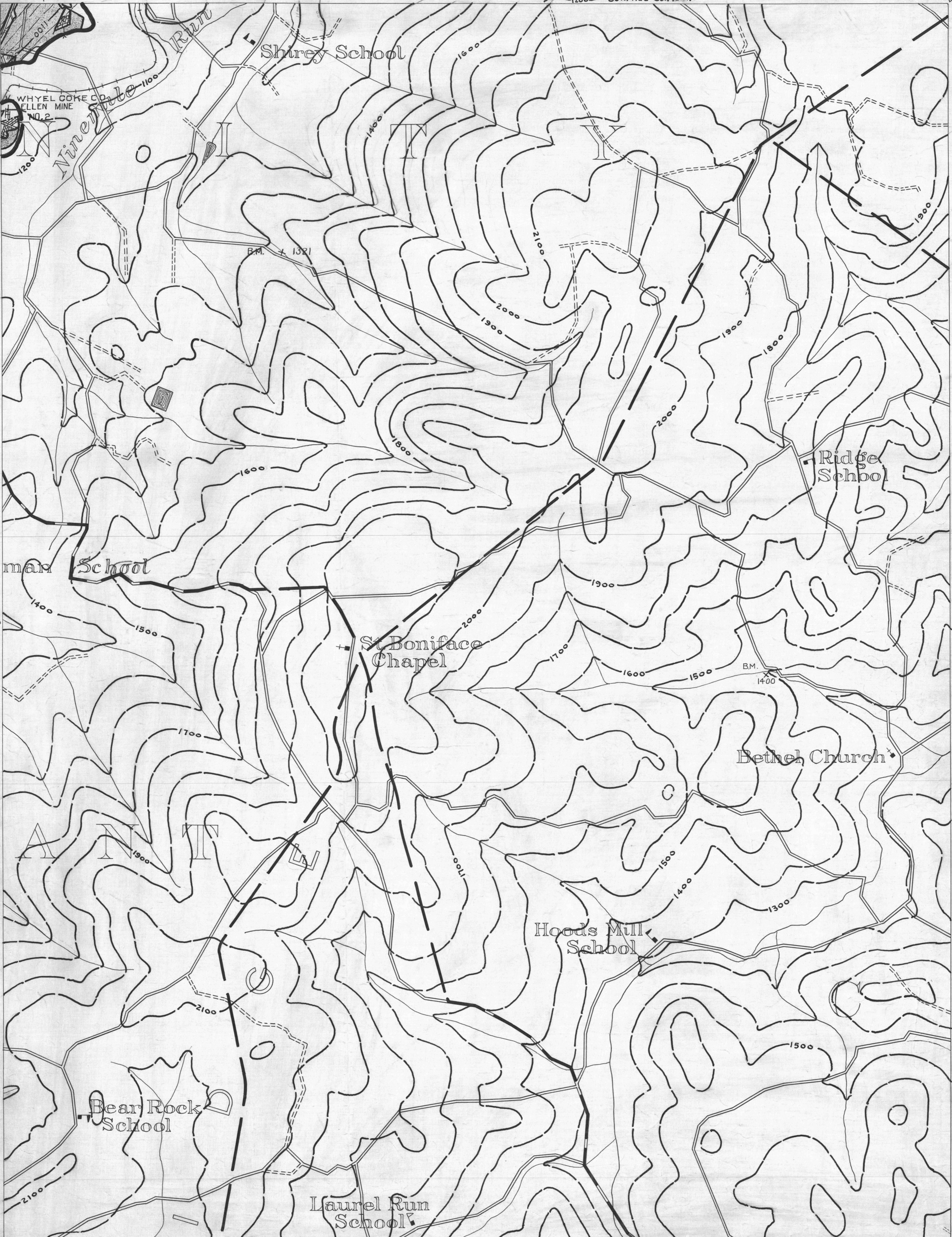
Latrobe No. 7
40°15'

- ACTIVE OIL WELL
- ◆ ABANDONED OIL WELL
- ★ ACTIVE GAS WELL
- ✱ ABANDONED GAS WELL
- ✱ ACTIVE OIL & GAS WELL
- ✱ ABANDONED OIL & GAS WELL
- DRY HOLE
- NO RECORD

- COUNTY LINES
- TOWNSHIP LINES
- BOROUGH LINES
- SURFACE CONTOURS
- COAL CONTOURS
- CROP LINES-SEAM BEING MINED
- CROP LINES-SEAMS NOT BEING MINED

Latrobe No. 9
79°20'
40°15'

Latrobe 8



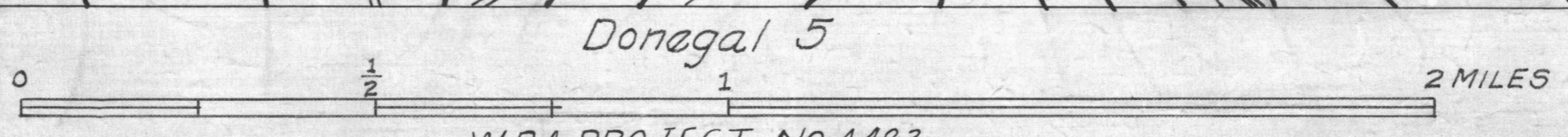
Donegal 1

Donegal 5

Donegal No. 4
40°10'
79°25'

Donegal No. 6
40°10'
79°20'

- DEIFT OPENING
- SLOPE OPENING
- SHAFTS
- BARRIER PILLAR



W.P.A. PROJECT NO. 4483

PITTSBURGH SEAM.
DONEGAL SHEET NO. 2

matched