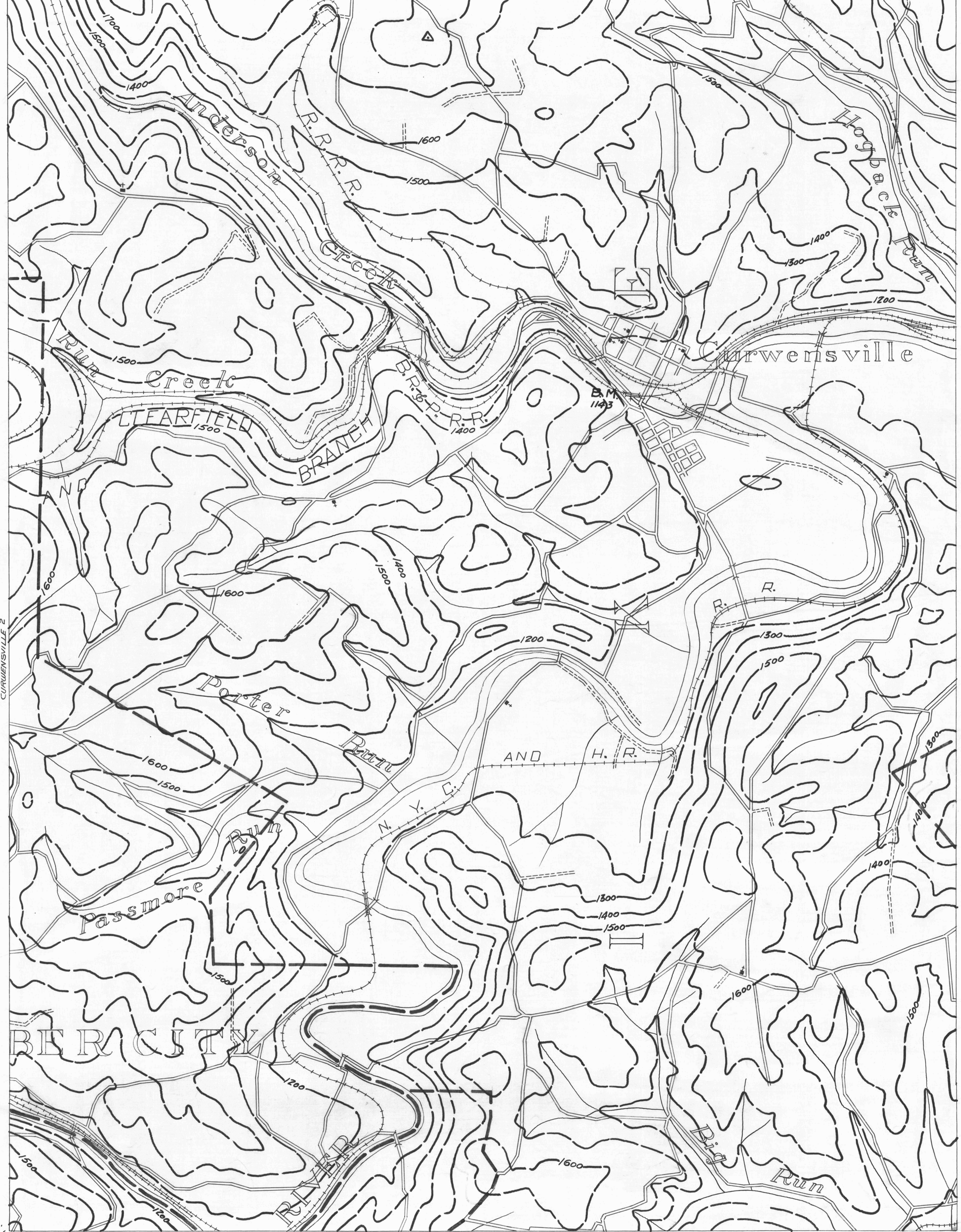
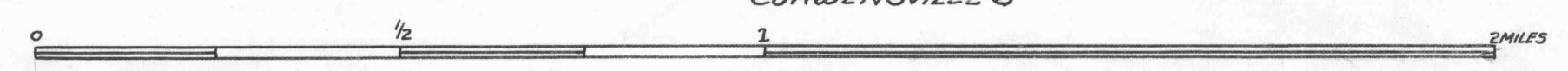


PENFIELD 8 78° 35' 41° 0' PENFIELD 9 78° 30' 41° 0' CLEARFIELD 7

- ACTIVE OIL WELL
- ABANDONED OIL WELL
- ★ ACTIVE GAS WELL
- ☆ ABANDONED GAS WELL
- DRY HOLE
- NO RECORD
- COUNTY LINES
- TOWNSHIP LINES
- BOROUGH LINES
- SURFACE CONTOURS
- COAL CONTOURS
- CROP LINES-SEAMS BEING MINED
- CROP LINES-SEAMS NOT BEING MINED



- DRIFT OPENING
- SLOPE OPENING
- SHAFTS
- ▨ BARRIER PILLAR



CURWENSVILLE SHEET NO. 3

W.P.A. PROJECT NO. 25734

CURWENSVILLE 2 78° 35' 40° 55' CURWENSVILLE 6 78° 35' 40° 55' HOUTZDALE 1 HOUTZDALE 4