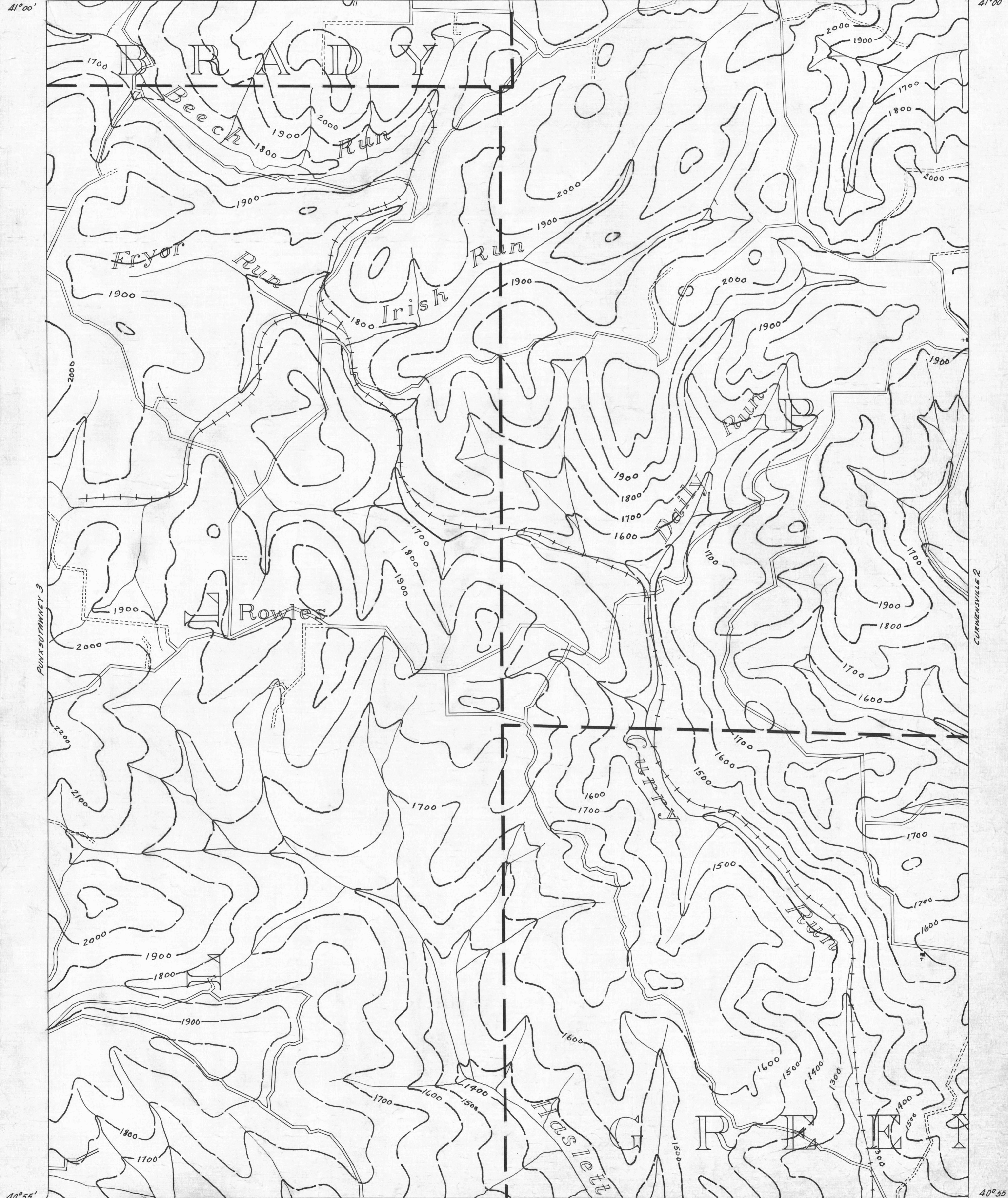


DUBOIS 9 78°45' 41°00' 78°40' PENFIELD 8 41°00'

● ACTIVE OIL WELL	* ACTIVE OIL & GAS WELL	— SURFACE CONTOURS	— COUNTY LINES	— COAL CONTOURS
● ABANDONED OIL WELL	* ABANDONED OIL & GAS WELL	— TOWNSHIP LINES	— BOROUGH LINES	— CROP LINES - SEAM BEING MINED
⊛ ACTIVE GAS WELL	⊛ DRY HOLE			— CROP LINES - SEAMS NOT BEING MINED
⊛ ABANDONED GAS WELL	○ NO RECORD			

PENFIELD 7



40°55' 78°45' 78°40' 40°55'

Y DRIFT OPENING	— CURWENSVILLE 4	2 Miles	CURWENSVILLE SHEET No. 1	CURWENSVILLE 5
Z SLOPE OPENING				
□ SHAFTS				
▬ BARRIER PILLAR				

W.P.A. PROJECT NO 4483