

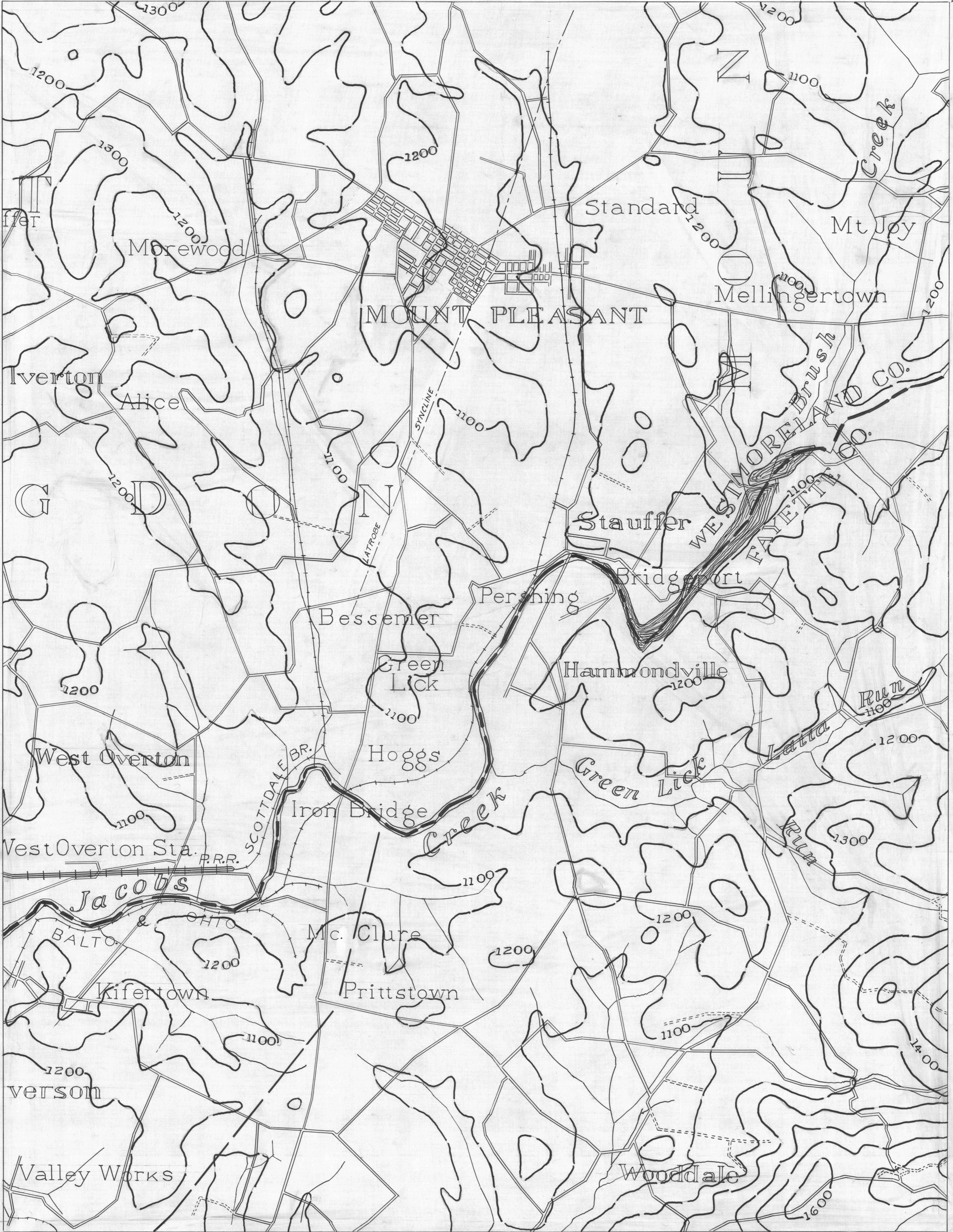
Connellsville No. 2
40° 10'

- ACTIVE OIL WELL
- ABANDONED OIL WELL
- ★ ACTIVE GAS WELL
- ✱ ABANDONED GAS WELL
- ★ ACTIVE OIL & GAS WELL
- ABANDONED OIL & GAS WELL
- DRY HOLE
- NO RECORD

Connellsville 3

- COUNTY LINES
- TOWNSHIP LINES
- BOROUGH LINES
- SURFACE CONTOURS
- 980 COAL CONTOURS
- 900 COAL CONTOURS
- CROP LINES - SEAMS BEING MINED
- CROP LINES - SEAMS NOT BEING MINED

Donegal 1
79° 30'
40° 10'

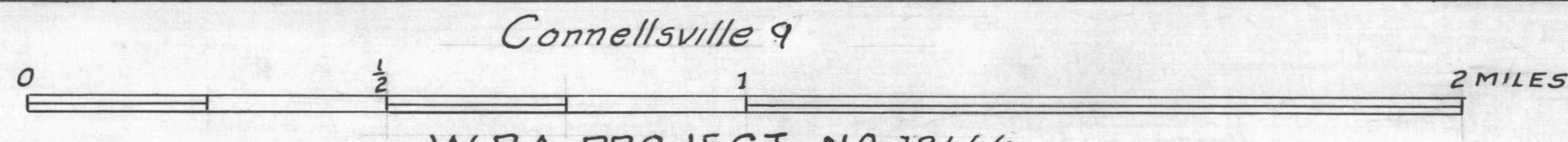


Connellsville 5

Donegal 4

40° 05'
Connellsville No. 3
79° 35'

- DRIFT OPENING
- SLOPE OPENING
- SHAFTS
- BARRIER PILLAR



Connellsville 9
W.P.A. PROJECT NO 19666

CONNELLSVILLE SHEET NO. 6

Donegal 7
40° 05'
79° 35'