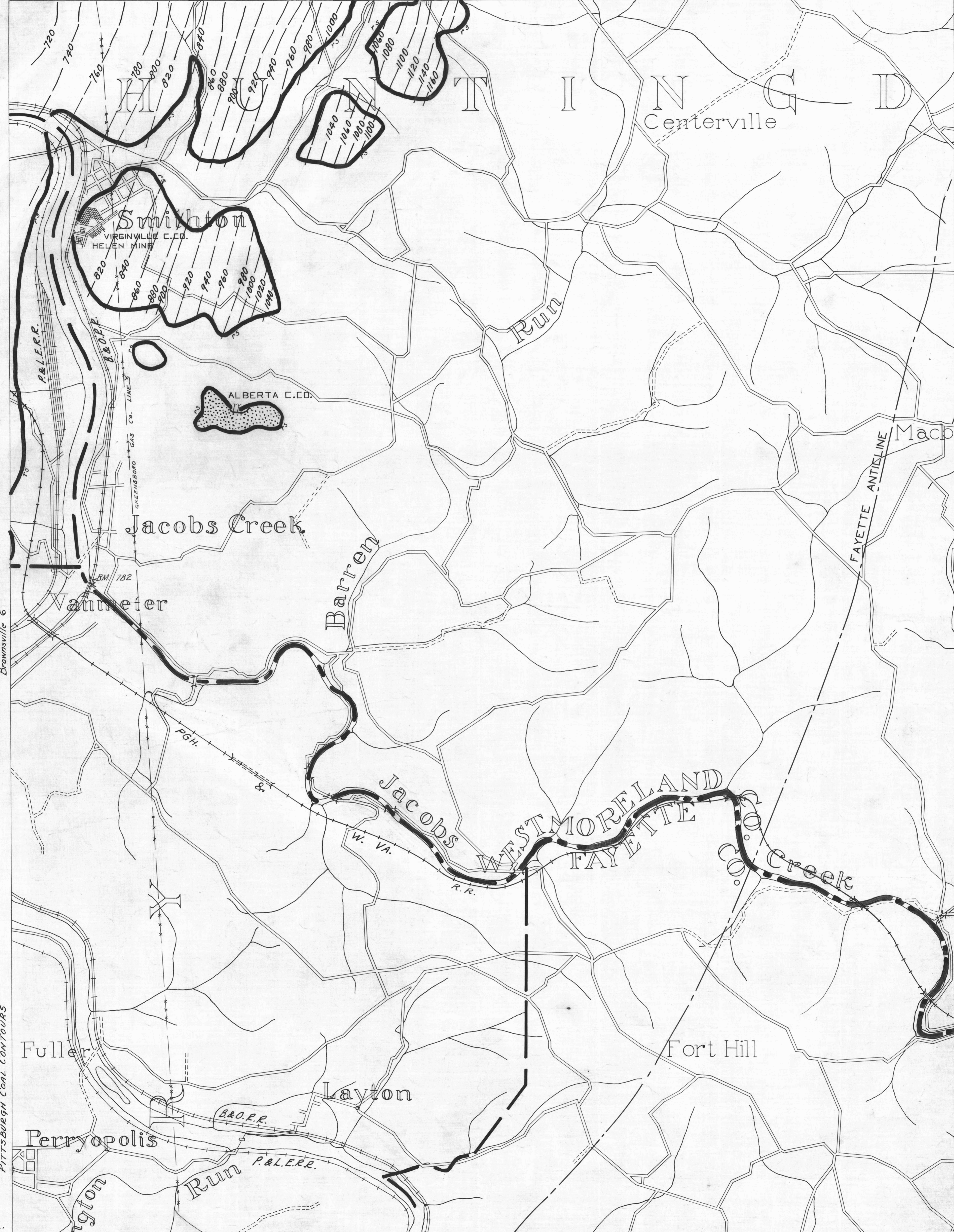


BROWNsville 5 79°-45' 40°-10' Connellsville 1  
 ● ACTIVE OIL WELL    \* ACTIVE OIL & GAS WELL    ——— COUNTY LINES    ——— COAL CONTOURS — 980 — 900  
 ○ ABANDONED OIL WELL    \* ABANDONED OIL & GAS WELL    - - - TOWNSHIP LINES    - - - CROP LINES - SEAMS BEING MINED  
 \* ACTIVE GAS WELL    ○ DRY HOLE    - - - BOROUGHS LINES    - - - CROP LINES - SEAMS NOT BEING MINED  
 \* ABANDONED GAS WELL    ○ NO RECORD



NOTE - REDSTONE COAL CONTOURS ARE DERIVED BY ADDING 80 FEET TO PITTSBURGH COAL CONTOURS

——— DRIFT OPENING  
 - - - SLOPE OPENING  
 □ SHAFTS  
 ■ BARRIER PILLAR

W.P.A. PROJECT NO 4483

CONNELLSVILLE SHEET NO. 4  
REDSTONE SEAM - 13

Brownsville 6 79°-45' 40°-05' Connellsville 7 Connellsville 8  
 Connellsville 5 79°-40' 40°-10' Connellsville 2