

Pittsburgh 9 79°45' 40°15'

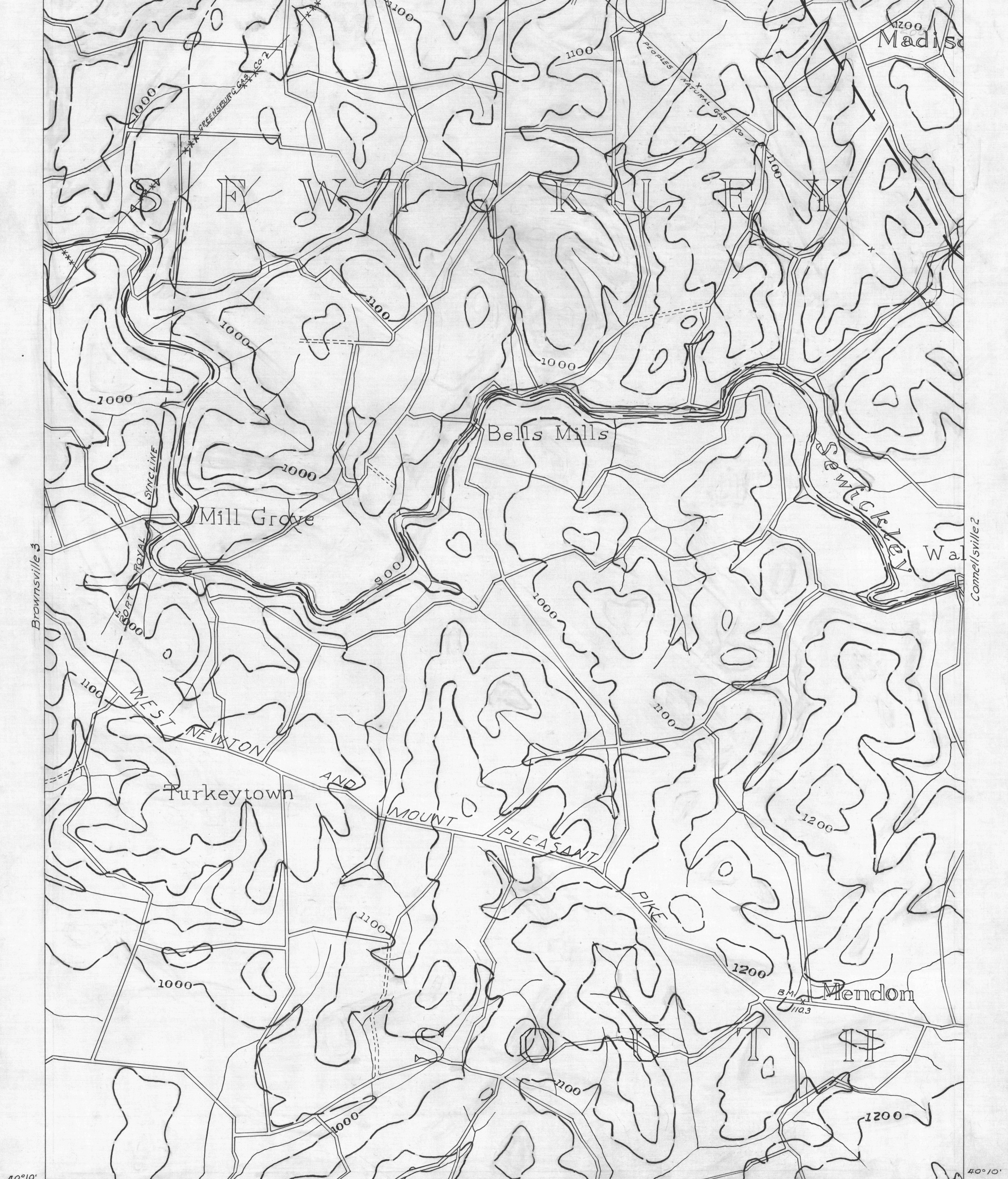
Greensburg 7

Greensburg 8 79°40' 40°15'

● ACTIVE OIL WELL
 ○ ABANDONED OIL WELL
 * ACTIVE GAS WELL
 ✱ ABANDONED GAS WELL
 * ACTIVE OIL & GAS WELL
 ✱ ABANDONED OIL & GAS WELL
 ○ DRY HOLE
 ○ NO RECORD

COUNTY LINES
 TOWNSHIP LINES
 BOROUGH LINES
 SURFACE CONTOURS

980 COAL CONTOURS 900
 CROP LINES SEAMS BEING MINED
 CROP LINES SEAMS NOT BEING MINED



Brownsville 6 79°45' 40°10'

Brownsville 3
 Brownsville 4
 Connellsville 2
 Connellsville 7
 Connellsville 8

— DRIFT OPENING
 — SLOPE OPENING
 □ SHAFTS
 ▨ BARRIER PILLAR

2 Miles
 WPA PROJECT NO 19666
 CONNELLSVILLE SH. NO 1