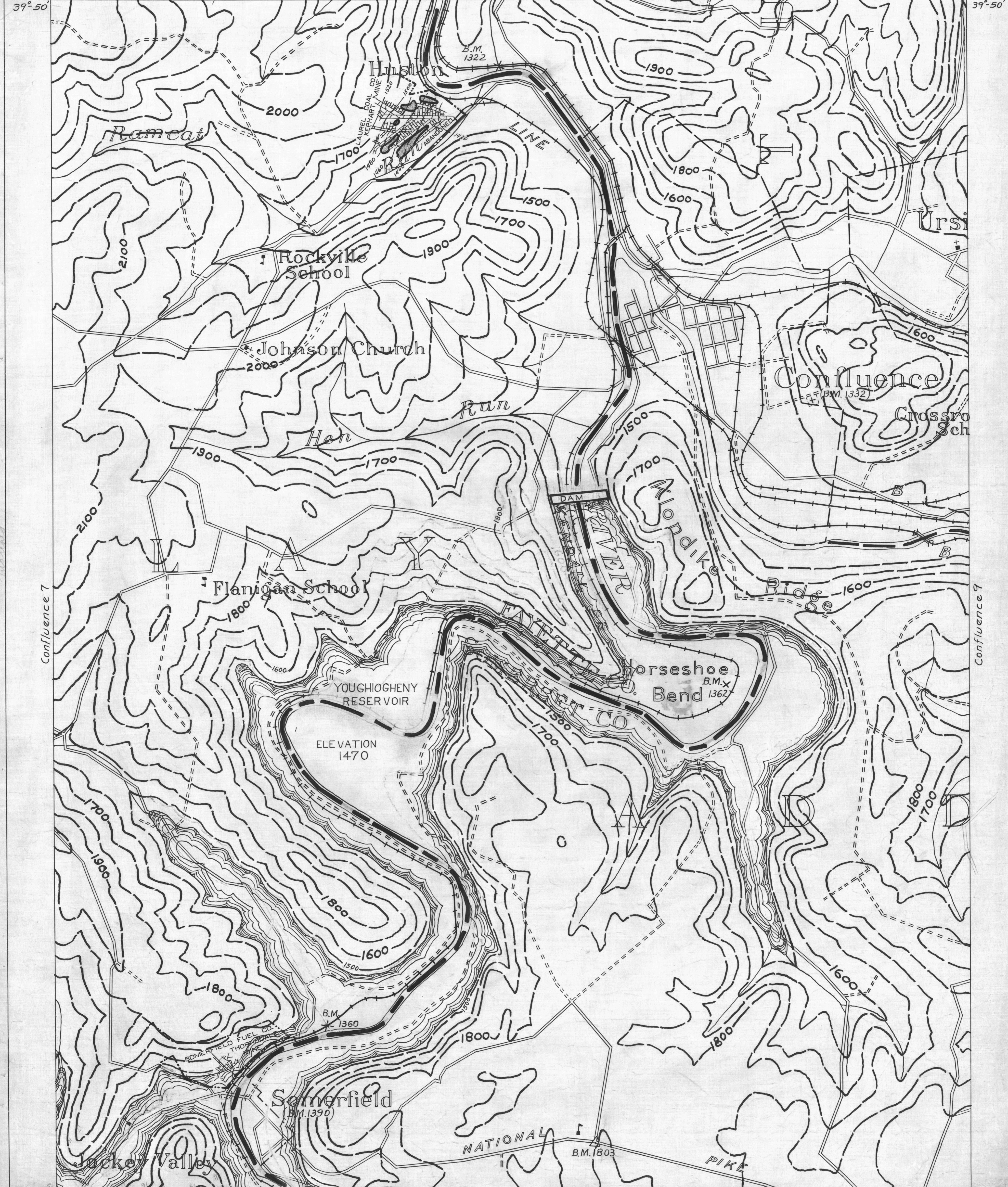


● ACTIVE OIL WELL      \* ACTIVE OIL & GAS WELL      ——— COUNTY LINES      — 980 — COAL CONTOURS  
 ○ ABANDONED OIL WELL      \* ABANDONED OIL & GAS WELL      - - - - - TOWNSHIP LINES      ——— CROPLINES—SEAMS BEING MINED  
 \* ACTIVE GAS WELL      \* DRY HOLE      ——— BOROUGH LINES      - - - - - CROPLINES—SEAMS NOT BEING MINED

Confluence 5



39° 45'      79° 25'      Accident 3  
 ——— DRIFT OPENING  
 ——— SLOPE OPENING  
 ——— SHAFTS  
 ——— BARRIER PILLAR

0 1 2 3 4 5 6 7 8 9 10  
 W.P.A. PROJECT NO. 4483      2 MILES

Surface Contours Redrawn for Reservoir  
 U.K. SEAM  
 CONFLUENCE SHEET No. 8.      79° 20'      Accident 2      39° 50'