

Uniontown 6  
39° 50'

- ACTIVE OIL WELL
- ◐ ABANDONED OIL WELL
- ⊛ ACTIVE GAS WELL
- ⊛ ABANDONED GAS WELL
- ⊛ ACTIVE OIL & GAS WELL
- ⊛ ABANDONED OIL & GAS WELL
- ⊛ DRY HOLE
- NO RECORD

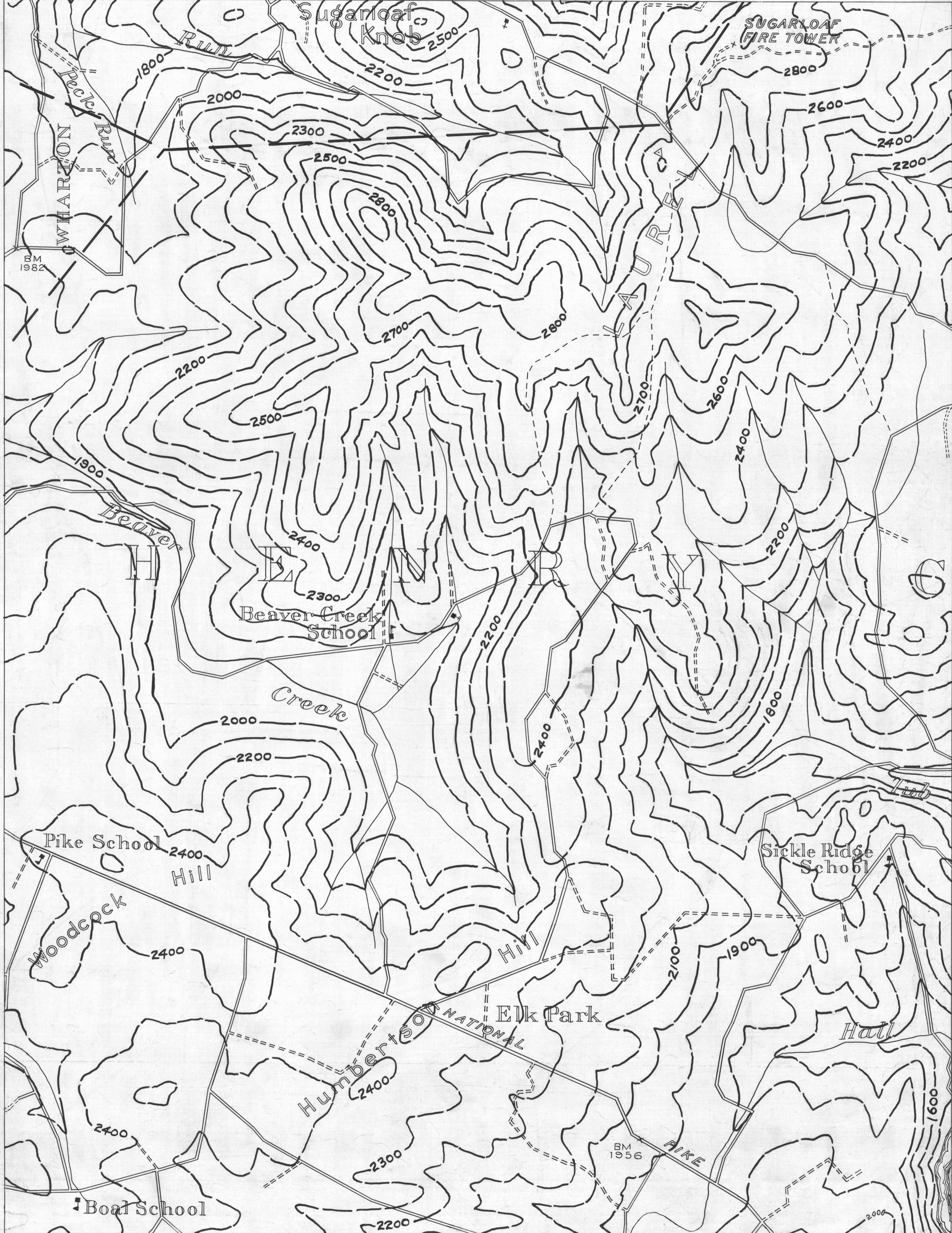
- ⊛ ACTIVE OIL & GAS WELL
- ⊛ ABANDONED OIL & GAS WELL
- ⊛ DRY HOLE
- NO RECORD

Confluence 4

- COUNTY LINES
- TOWNSHIP LINES
- BOROUGH LINES

- 980 COAL CONTOURS
- CROP LINES—SEAMS BEING MINED
- - - CROP LINES—SEAMS NOT BEING MINED

79° 25'  
Confluence 5  
39° 50'

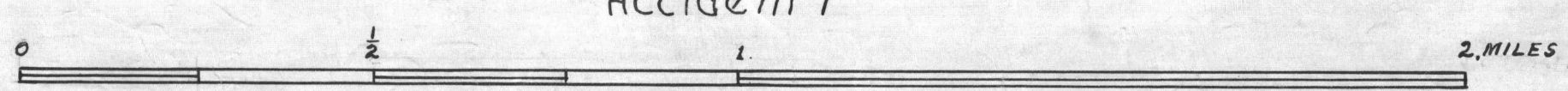


Uniontown 9

Confluence 8

39° 45'  
Druceton 3  
79° 30'

- DRIFT OPENING
- SLOPE OPENING
- SHAFTS
- BARRIER PILLAR



W.P.A. PROJECT NO 4483

CONFLUENCE SHEET No. 7

79° 25'  
Accident 2  
39° 45'