

UNIONTOWN 3
79°30'
39°55'

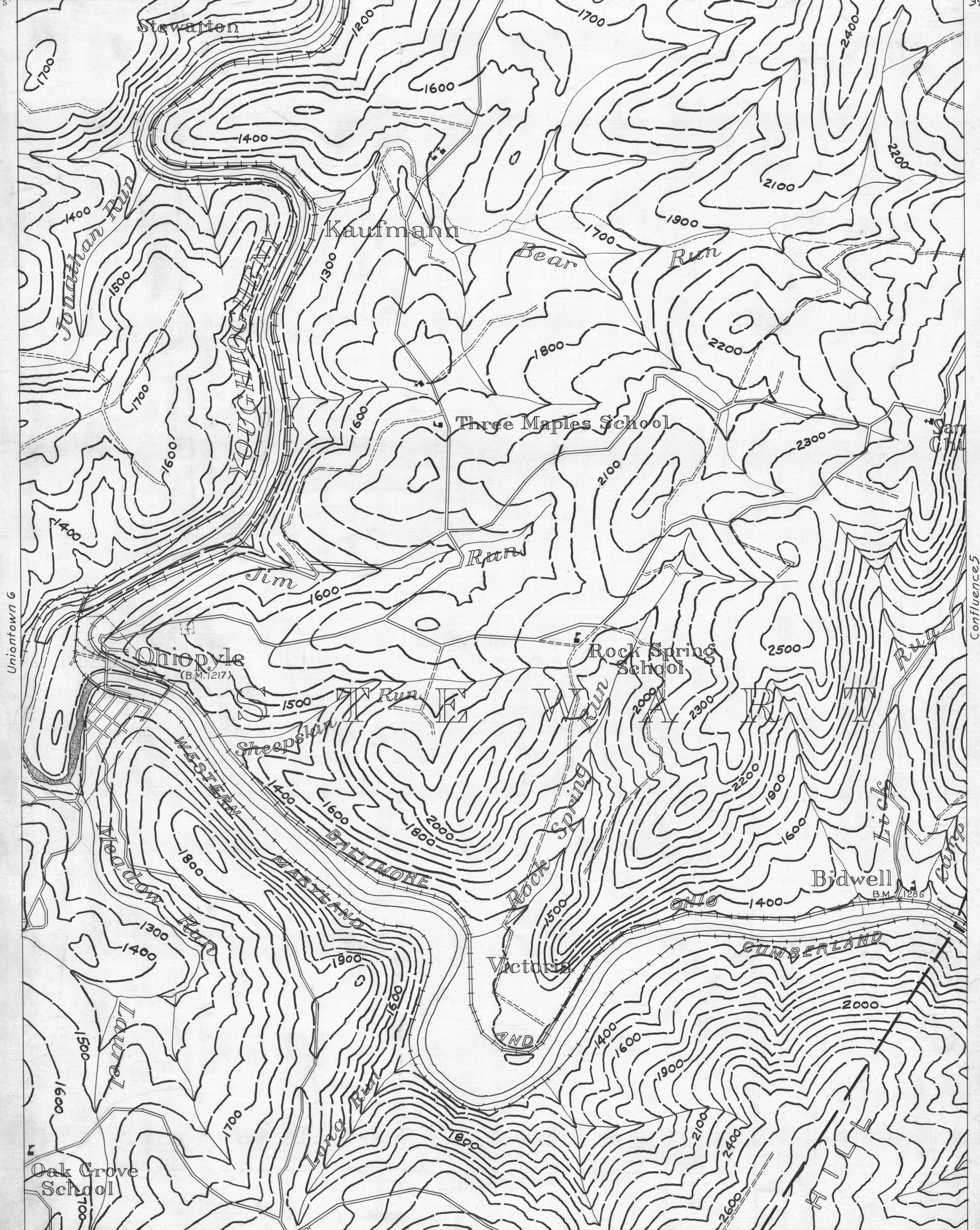
- ACTIVE OIL WELL
- ABANDONED OIL WELL
- ◆ ACTIVE GAS WELL
- ABANDONED GAS WELL
- * ACTIVE OIL & GAS WELL
- * ABANDONED OIL & GAS WELL
- ◇ DRY HOLE
- NO RECORD

- COUNTY LINES
- TOWNSHIP LINES
- BOROUGH LINES

- 980 COAL CONTOURS
- GROPLINES—SEAMS BEING MINED
- - - GROPLINES—SEAMS NOT BEING MINED

Confluence 1

79°25'
39°55'



Uniontown 6

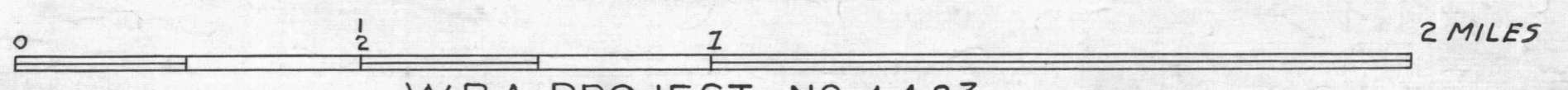
Confluence 5

Confluence 7

UNIONTOWN 9
78°50'
39°50'

79°25'
39°50'

- DRIFT OPENING
 - SLOPE OPENING
 - SHAFTS
 - BARRIER PILLAR
- MINE MAP DEPARTMENT 1934



W.P.A. PROJECT NO 4483

CONFLUENCE SHEET NO. 4.